

Townhouse in Benalmadena

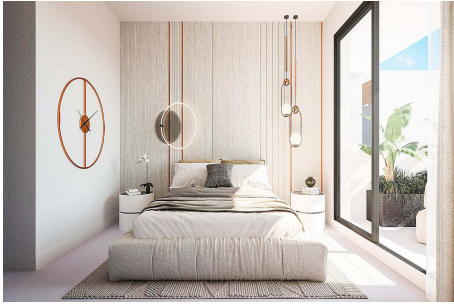
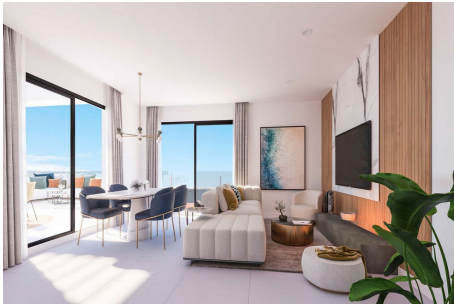
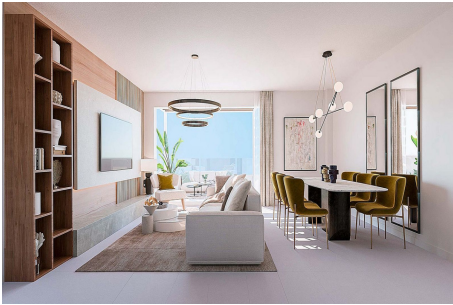
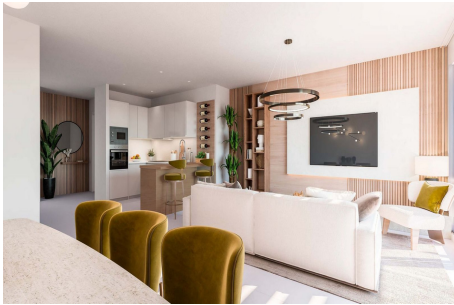
Benalmadena, Costa del Sol

€829,000

Ref: SP4415131

Mane Residences is an exclusive, private development situated in a privileged location in Benalmádena. Thanks to its elevated position, all homes boast breathtaking panoramic views of the sea and the coast. The sloping terrain allows for staggered housing, with large terraces that are further enhanced by glass railings that appear to blend seamlessly with the sea in front, allowing for maximum appreciation of the views and the stunning sunlight. The terraced layout of Mane Residences overlooking the Mediterranean Sea means that each and every one of the 49 homes and 2 townhouses enjoy bright rooms thanks to natural light. Mane Residences offers cosy 2 and 3-bedroom homes with large terraces, bright penthouses, and townhouses with private gardens and terraces. The Costa del Sol, with its...

Gallery



Property Description

Location: Benalmadena, Costa del Sol, Spain

Mane Residences is an exclusive, private development situated in a privileged location in Benalmádena. Thanks to its elevated position, all homes boast breathtaking panoramic views of the sea and the coast. The sloping terrain allows for staggered housing, with large terraces that are further enhanced by glass railings that appear to blend seamlessly with the sea in front, allowing for maximum appreciation of the views and the stunning sunlight.

The terraced layout of Mane Residences overlooking the Mediterranean Sea means that each and every one of the 49 homes and 2 townhouses enjoy bright rooms thanks to natural light. Mane Residences offers cosy 2 and 3-bedroom homes with large terraces. bright penthouses, and townhouses with private gardens and terraces.

The Costa del Sol. with its great variety of landscapes from the sea to the mountains, has for decades been one of the favourite areas for visitors from all over the world for tourism or as a place of residence. Its privileged climate all year round, its picturesque and traditional villages, the friendly character of its people and its gastronomy, make the Costa del Sol an idyllic and welcoming

Features:

- Outdoor swimming pool
- Close to Village
- Panoramic Sea Views
- Great Location
- Spectacular panoramic Sea Views
- Natural light in all units
- Unbeatable location at the foot of the Benalmadena golf course
- Close to hospital
- Gym
- Penthouses with solarium
- Close to amenities

Additional Info

For Sale	Beds: 3	Baths: 3
Type: Townhouse	Area: 173 m2	Land Area: 223 m2
Features: Covered Terrace, Fitted Wardrobes, Private Terrace, WiFi, Gym, Games Room, Storage Room, Utility Room, Ensuite Bathroom, Barbeque, Double Glazing, Domotics, Basement, Fiber Optic	Setting: Village / Close To Golf / Close To Schools / Urbanisation	Orientation: South
Condition: New Construction	Pool: Communal	Climate Control: Air Conditioning
Views: Sea / Mountain / Panoramic	Furniture: Not Furnished	Kitchen: Fully Fitted
Garden: Communal	Security: Gated Complex	Parking: Communal
Category: Investment / Luxury / Contemporary		

FloorPlans

PDF