



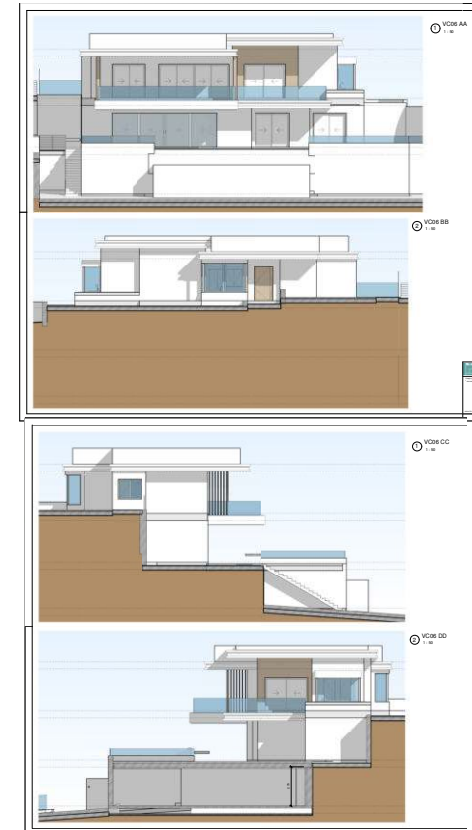
THE
RESINA
6IX



Villa 5 (ref. 6)

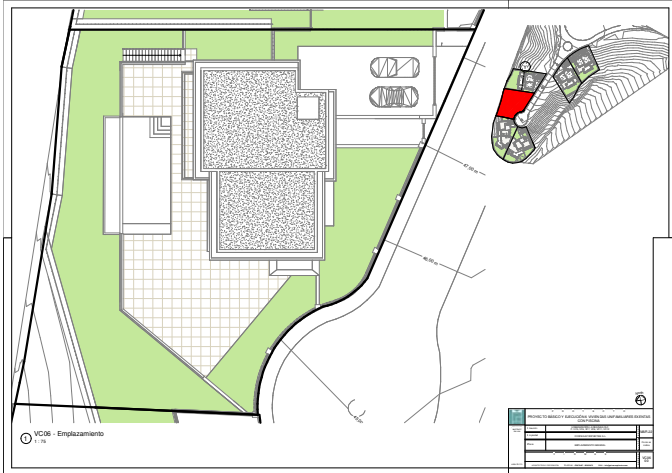


1.111 M2 PLOT | 496,14 M2 BUILT | 466,3 M2 TERRACE | WEST FACING
INCLUDING FURNITURE & SOLAR PANELS

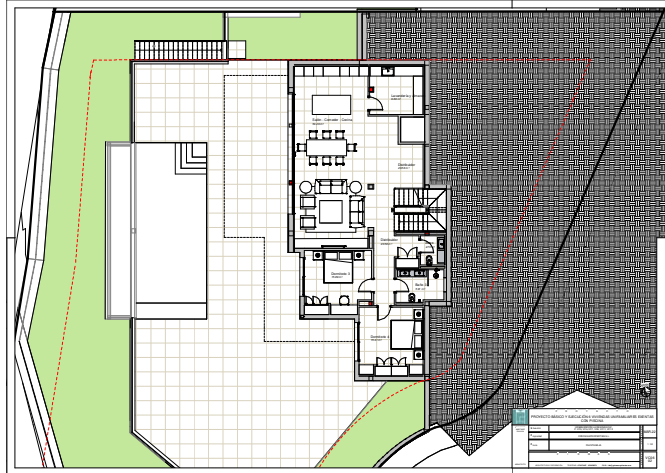


Villa 5 - Floor plans

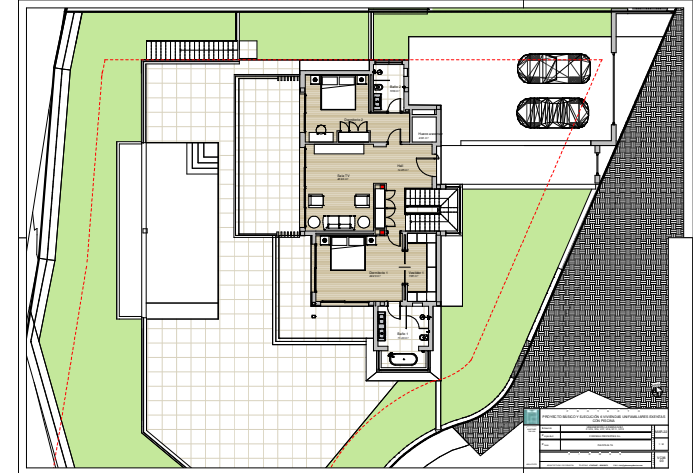
GENERAL LOCATION



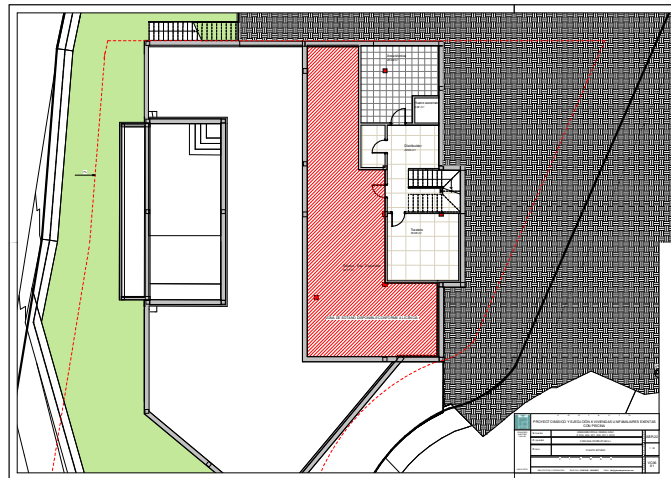
GROUND FLOOR - 167,74 m²



FIRST FLOOR - 141,98 m²

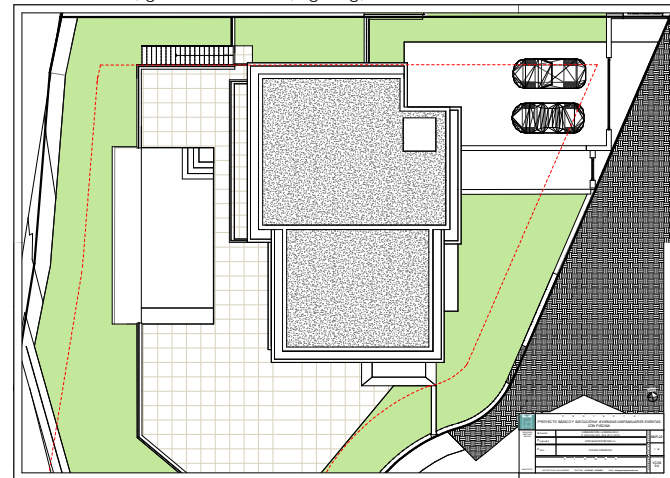


BASEMENT - 186,42 m²



ROOF TOP

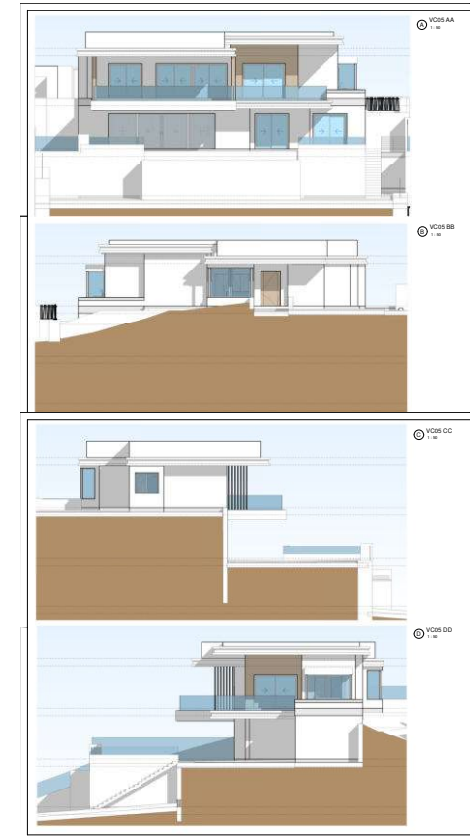
Includes floor, glass balustrades, lighting, stairs for access



Villa 6 (ref. 5)

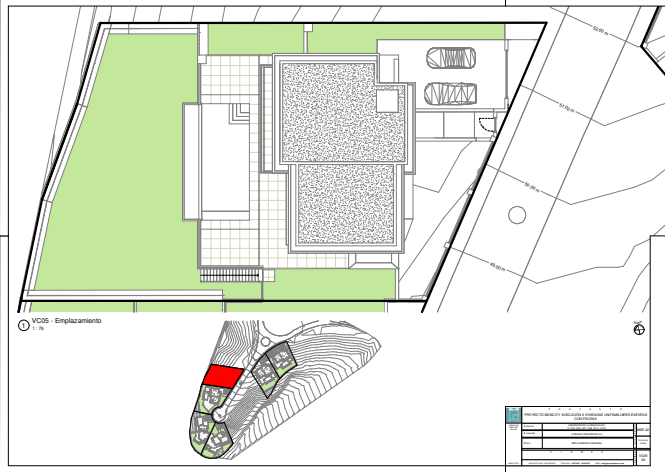


1.048 M2 PLOT | 496,43 M2 BUILT | 377,98 M2 TERRACE | WEST FACING
INCLUDING FURNITURE & SOLAR PANELS

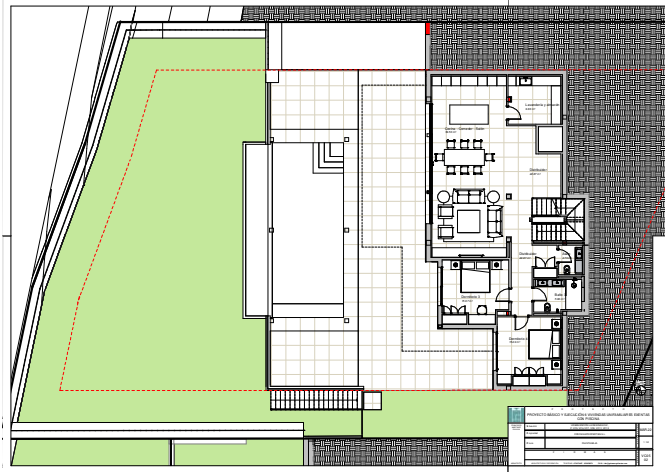


Villa 6 - Floor plans

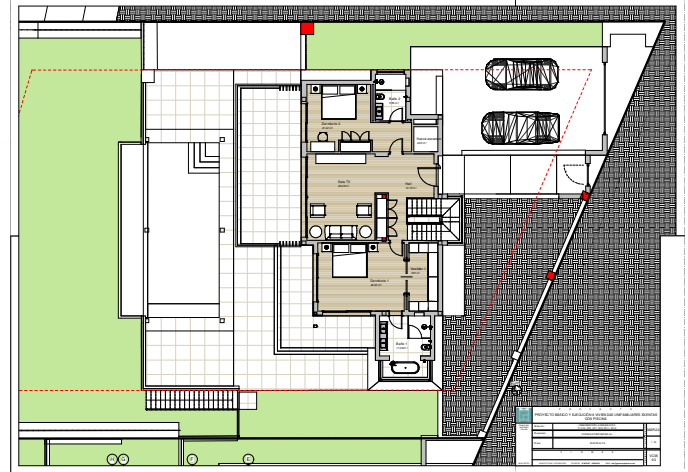
GENERAL LOCATION



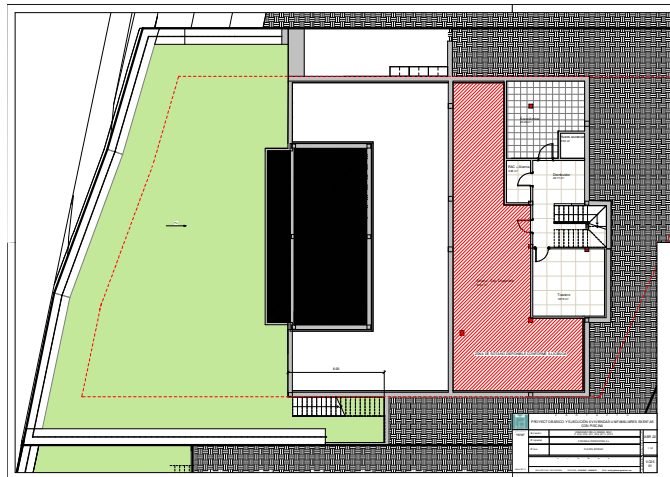
GROUND FLOOR - 167,83 m²



FIRST FLOOR - 142,18 m²

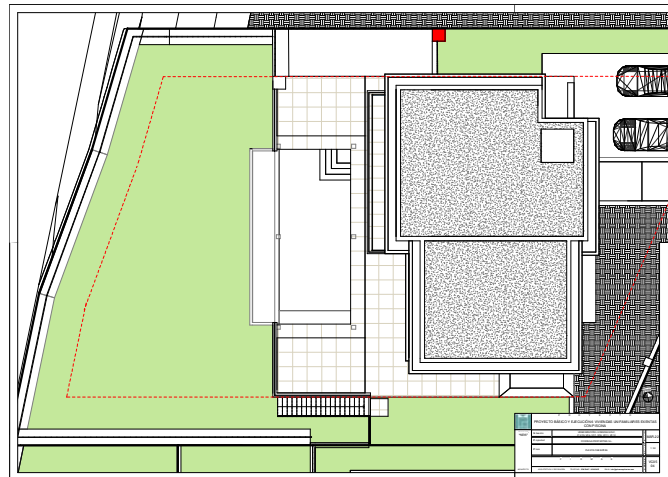


BASEMENT - 186,42 m²



ROOF TOP

Includes floor, glass balustrades, lighting, stairs for access







THE
RESINA
6IX