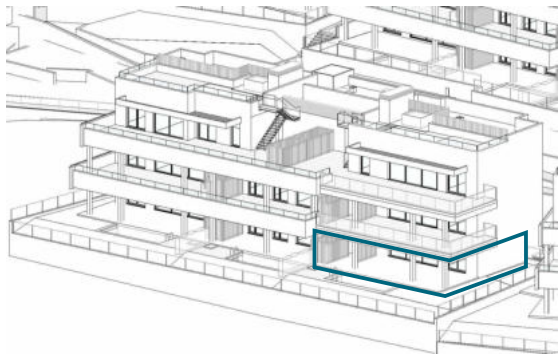
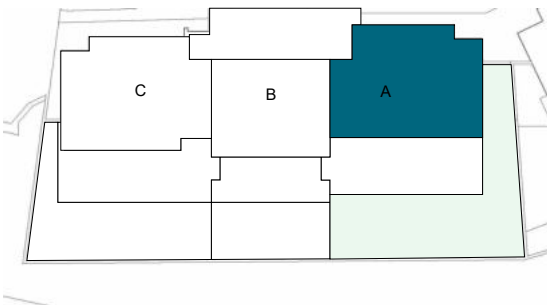
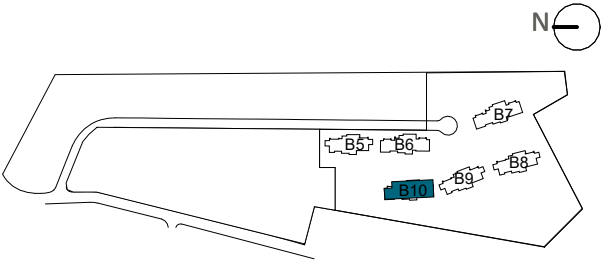


Apartment 100A

The information contained may be modified during the course of the work execution due to technical or legal requirements, without implying any reduction in the overall level of qualities. The access steps to the dwelling and exits to courtyards may be altered according to the level of the streets and it is up to the D.F. to set the criteria.



LOCATION



BLOCK 10

APPROXIMATE AREAS

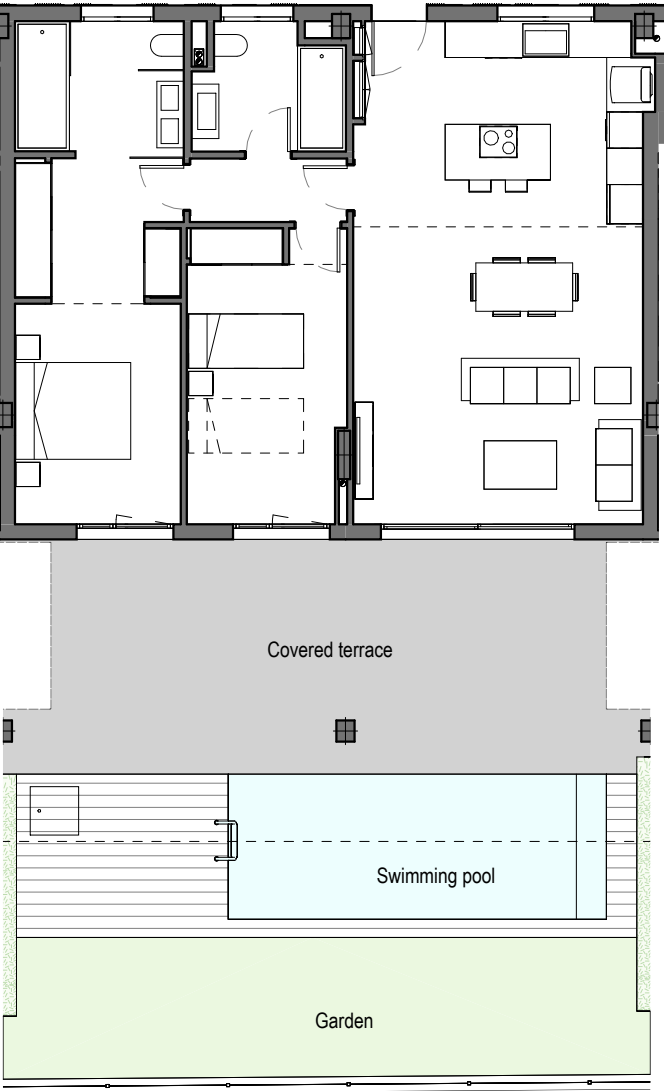
Entrance	2,61 m ²
Living room - Kitchen	46,48 m ²
Hall	3,02 m ²
Master Bedroom	17,65 m ²
Master bathroom	6,49 m ²
Bedroom 2	12,76 m ²
Bedroom 3	12,32 m ²
Bathroom 2	4,88 m ²
INTERNAL USEFUL FLOOR AREA	106,21 m ²

INTERNAL BUILT AREA	122,70 m ²
P.P. COMMON AREAS	37,04 m ²
INTERNAL GROSS AREA INCLUDING PP. COMMON AREAS	159,74 m ²

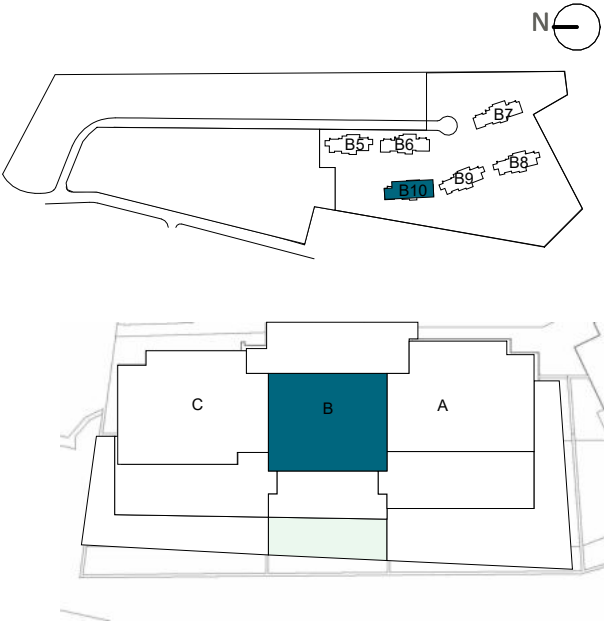
EXTERNAL AREAS	
Covered laundry room	4,07 m ²
Covered terrace	66,77 m ²
EXTERNAL USEFUL FLOOR AREA	70,84 m ²

TOTAL USEFUL FLOOR AREA GARDEN	121,38 m ²
--------------------------------	-----------------------

REGARDING DECRETO BOJA 218/2005	
TOTAL USEFUL FLOOR AREA	116,83 m ²
TOTAL BUILT AREA	170,36 m ²



LOCATION



BLOCK 10

APPROXIMATE AREAS

Entrance	5,77 m²
Living room - Kitchen	33,93 m²
Hall	2,73 m²
Master Bedroom	16,47 m²
Master bathroom	6,19 m²
Bedroom 2	12,60 m²
Bathroom 2	4,87 m²
INTERNAL USEFUL FLOOR AREA	82,56 m²

INTERNAL BUILT AREA	93,28 m²
P.P. COMMON AREAS	28,79 m²
INTERNAL GROSS AREA INCLUDING PP. COMMON AREAS	122,07 m²

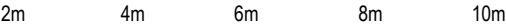
EXTERNAL AREAS	
Covered terrace	36,31 m²
EXTERNAL USEFUL FLOOR AREA	36,31 m²

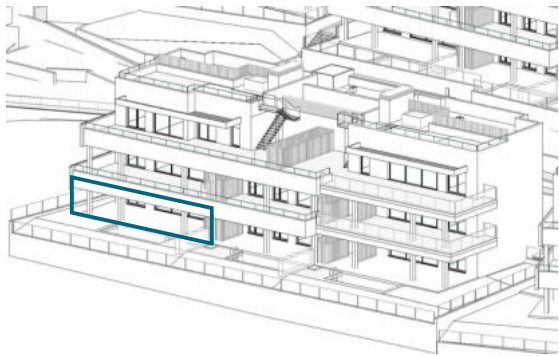
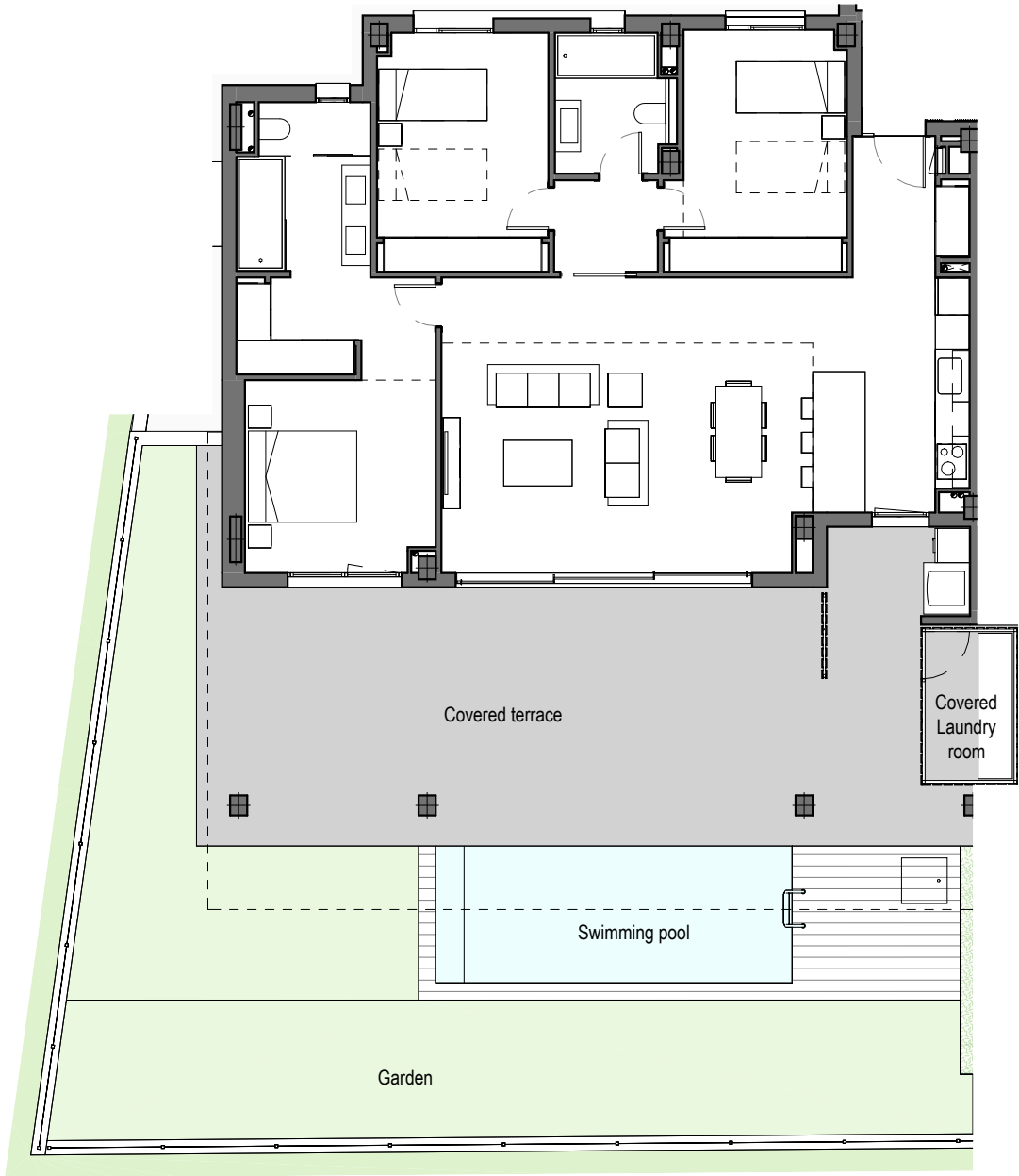
TOTAL USEFUL FLOOR AREA GARDEN	53,09 m²
--------------------------------	----------

REGARDING DECRETO BOJA 218/2005	
TOTAL USEFUL FLOOR AREA	90,82 m²
TOTAL BUILT AREA	130,32 m²

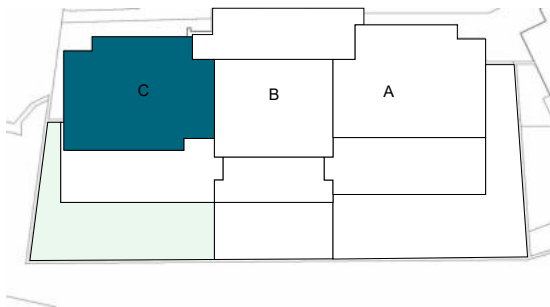
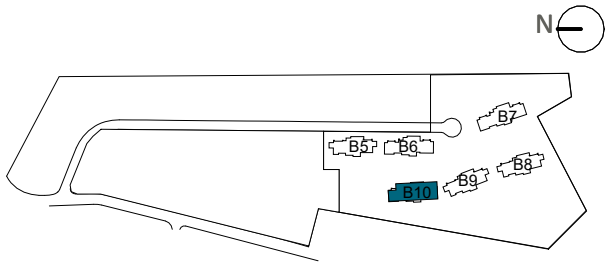
Apartment 100B

The information contained may be modified during the course of the work execution due to technical or legal requirements, without implying any reduction in the overall level of qualities. The access steps to the dwelling and exits to courtyards may be altered according to the level of the streets and it is up to the D.F. to set the criteria.





LOCATION



BLOCK 10

APPROXIMATE AREAS

Entrance	4,39 m ²
Living room - Kitchen	44,54 m ²
Hall	2,92 m ²
Master Bedroom	17,10 m ²
Master bathroom	6,74 m ²
Bedroom 2	12,49 m ²
Bedroom 3	12,64 m ²
Bathroom 2	4,85 m ²
INTERNAL USEFUL FLOOR AREA	105,67 m ²

INTERNAL BUILT AREA	122,57 m ²
P.P. COMMON AREAS	36,85 m ²
INTERNAL GROSS AREA INCLUDING PP. COMMON AREAS	159,42 m ²

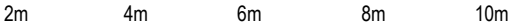
EXTERNAL AREAS	
Covered laundry room	4,07 m ²
Covered terrace	59,35 m ²
EXTERNAL USEFUL FLOOR AREA	63,42 m ²

TOTAL USEFUL FLOOR AREA GARDEN	94,56 m ²
--------------------------------	----------------------

REGARDING DECRETO BOJA 218/2005	
TOTAL USEFUL FLOOR AREA	116,24 m ²
TOTAL BUILT AREA	169,98 m ²

Apartment 100C

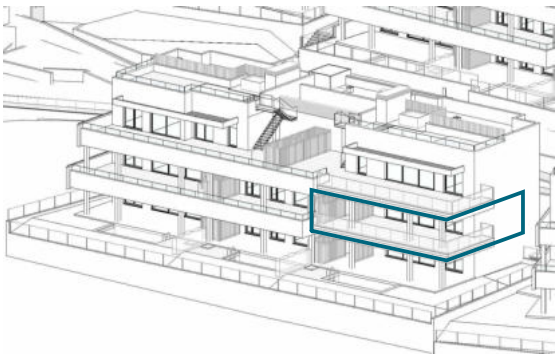
The information contained may be modified during the course of the work execution due to technical or legal requirements, without implying any reduction in the overall level of qualities. The access steps to the dwelling and exits to courtyards may be altered according to the level of the streets and it is up to the D.F. to set the criteria.



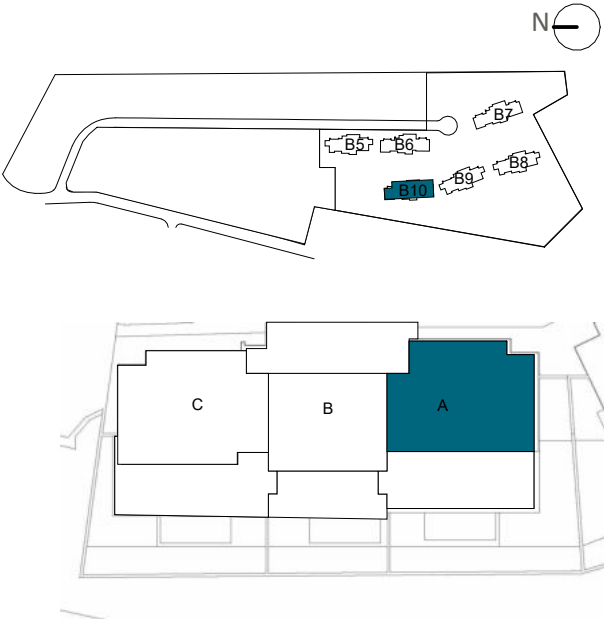


Apartment 101A

The information contained may be modified during the course of the work execution due to technical or legal requirements, without implying any reduction in the overall level of qualities. The access steps to the dwelling and exits to courtyards may be altered according to the level of the streets and it is up to the D.F. to set the criteria.



LOCATION



BLOCK 10

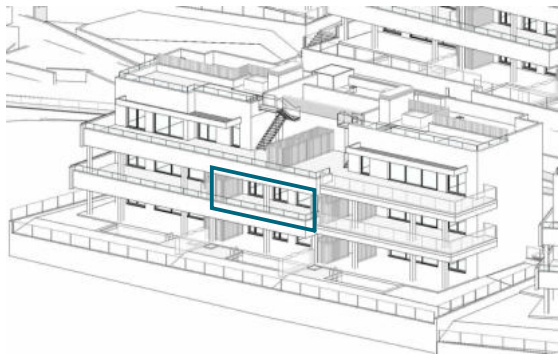
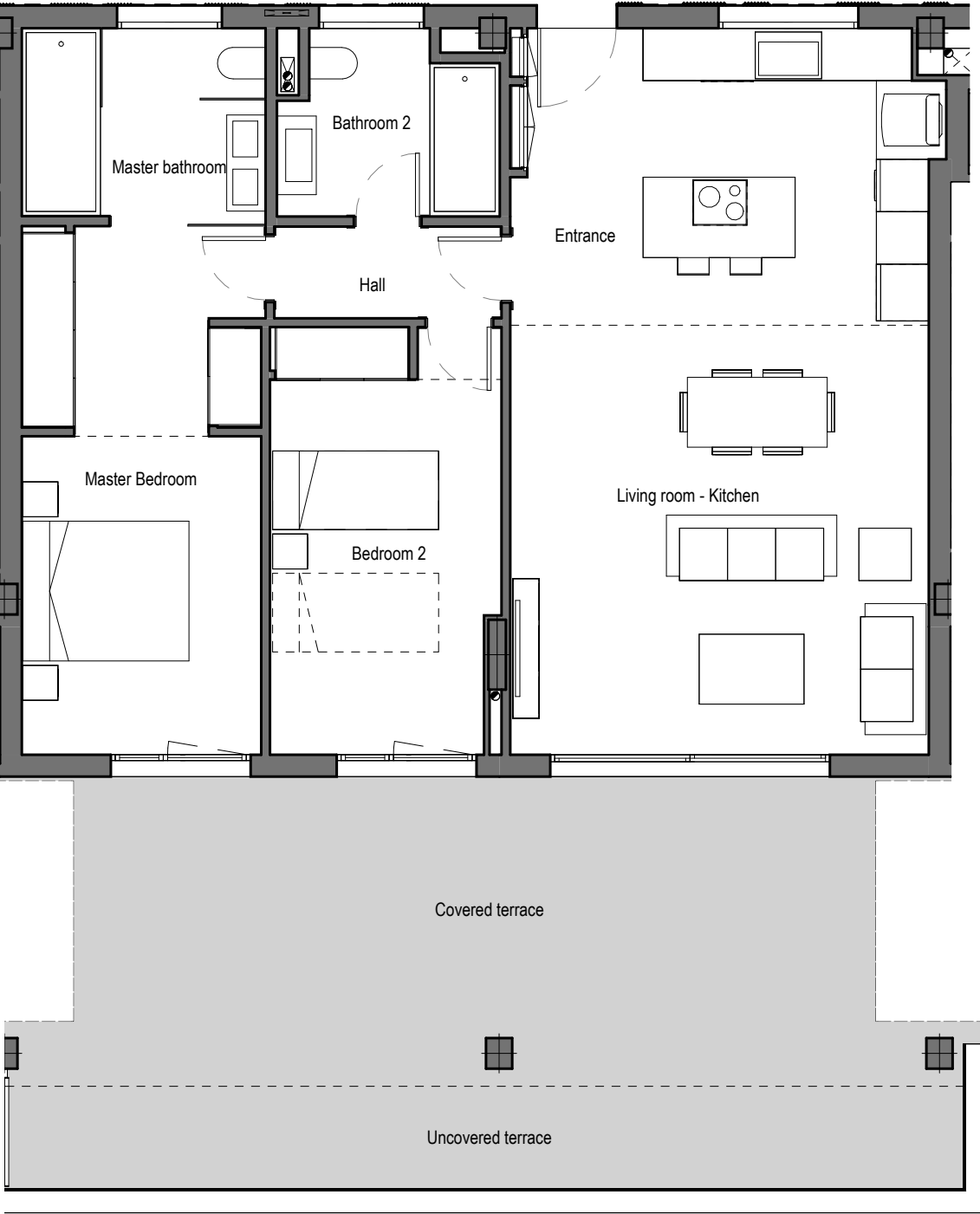
APPROXIMATE AREAS

Entrance	2,41 m²
Living room - Kitchen	46,48 m²
Hall	3,02 m²
Master Bedroom	17,65 m²
Master bathroom	6,49 m²
Bedroom 2	12,76 m²
Bedroom 3	12,32 m²
Bathroom 2	4,88 m²
INTERNAL USEFUL FLOOR AREA	106,01 m²

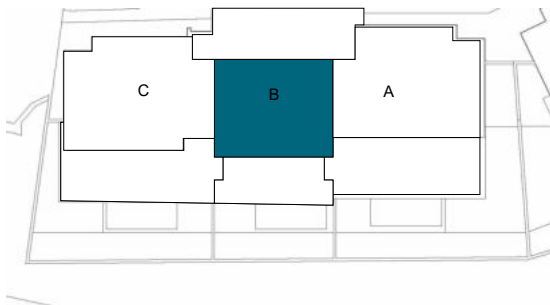
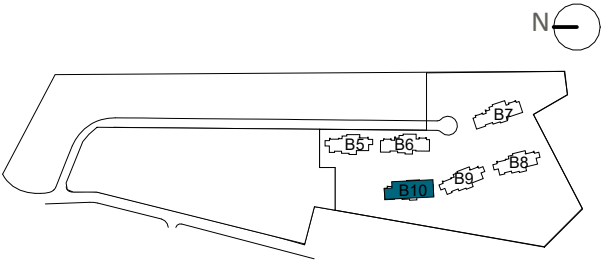
INTERNAL BUILT AREA	122,70 m²
P.P. COMMON AREAS	36,97 m²
INTERNAL BUILT AREA INCLUDING PP. COMMON AREAS	159,67 m²

EXTERNAL AREAS	
Covered laundry room	4,07 m²
Covered terrace	66,71 m²
Uncovered terrace	7,16 m²
EXTERNAL USEFUL FLOOR AREA	77,94 m²

REGARDING DECRETO BOJA 218/2005	
TOTAL USEFUL FLOOR AREA	116,61 m²
TOTAL BUILT AREA	170,27 m²



LOCATION



BLOCK 10

APPROXIMATE AREAS

Entrance	5,77 m ²
Living room - Kitchen	33,93 m ²
Hall	2,73 m ²
Master Bedroom	16,47 m ²
Master bathroom	6,19 m ²
Bedroom 2	12,60 m ²
Bathroom 2	4,87 m ²
INTERNAL USEFUL FLOOR AREA	82,56 m ²

INTERNAL BUILT AREA	93,28 m ²
P.P. COMMON AREAS	28,79 m ²
INTERNAL BUILT AREA INCLUDING PP. COMMON AREAS	122,07 m ²

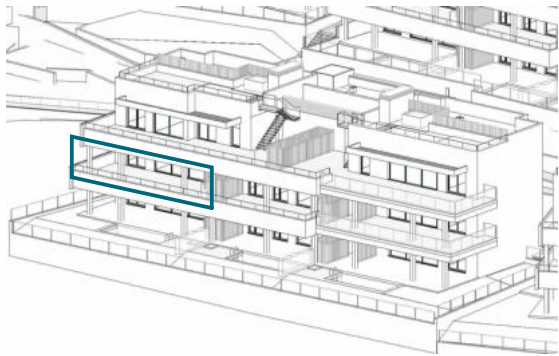
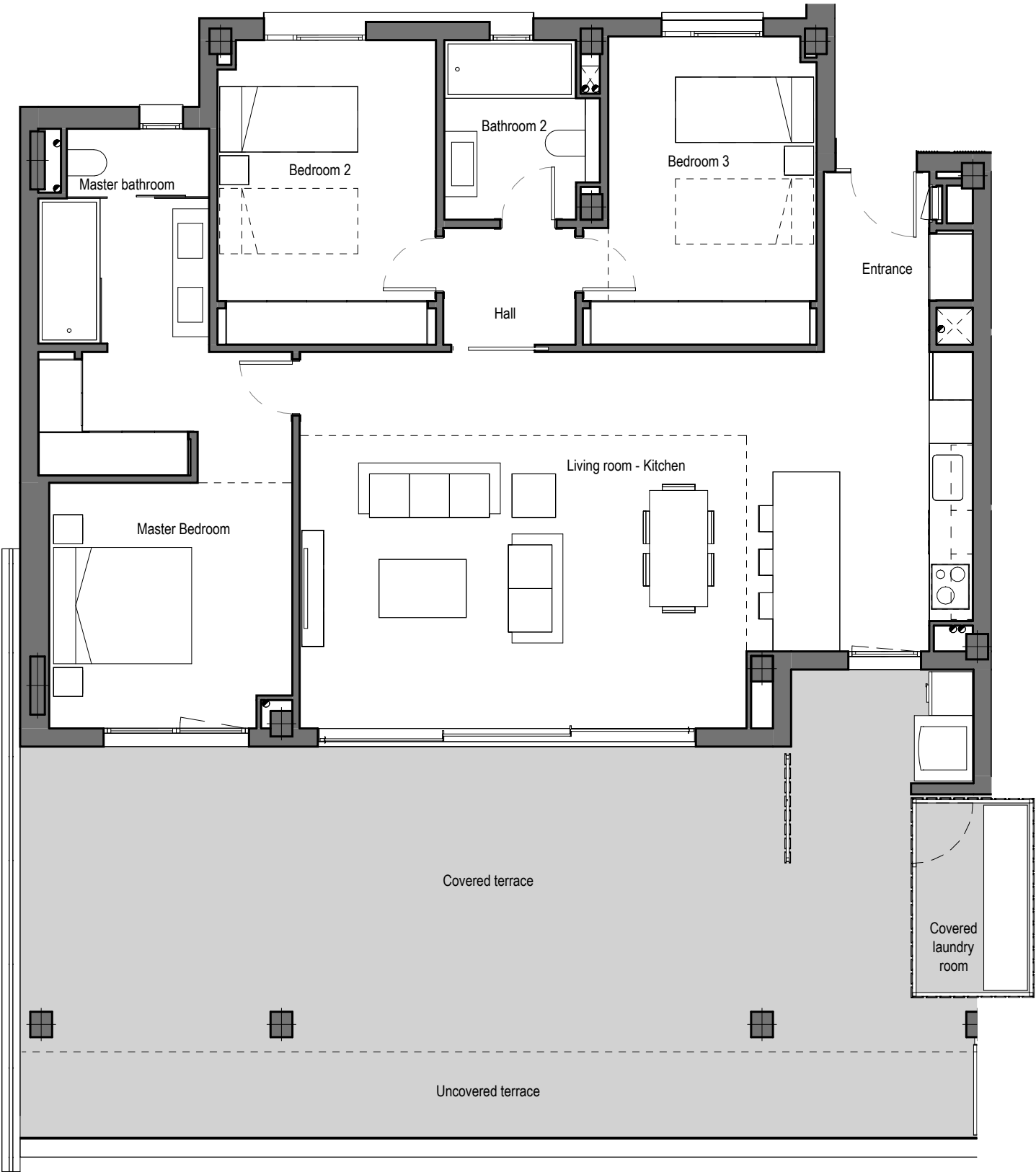
EXTERNAL AREAS	
Covered terrace	33,54 m ²
Uncovered terrace	13,18 m ²
EXTERNAL USEFUL FLOOR AREA	46,72 m ²

REGARDING DECRETO BOJA 218/2005	
TOTAL USEFUL FLOOR AREA	90,82 m ²
TOTAL BUILT AREA	130,32 m ²

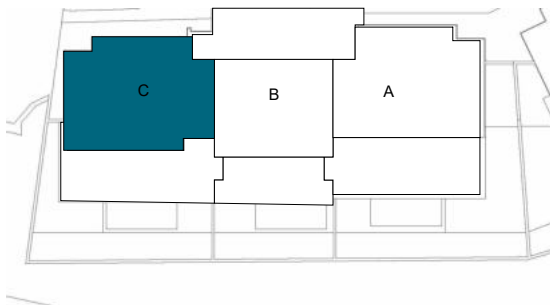
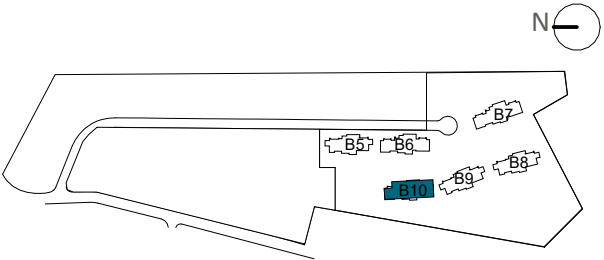
Apartment 101B

The information contained may be modified during the course of the work execution due to technical or legal requirements, without implying any reduction in the overall level of qualities. The access steps to the dwelling and exits to courtyards may be altered according to the level of the streets and it is up to the D.F. to set the criteria.





LOCATION



BLOCK 10

APPROXIMATE AREAS

Entrance	4,20 m ²
Living room - Kitchen	44,54 m ²
Hall	2,92 m ²
Master Bedroom	17,10 m ²
Master bathroom	6,74 m ²
Bedroom 2	12,49 m ²
Bedroom 3	12,64 m ²
Bathroom 2	4,85 m ²
INTERNAL USEFUL FLOOR AREA	105,48 m ²

INTERNAL BUILT AREA	122,57 m ²
P.P. COMMON AREAS	36,78 m ²
INTERNAL BUILT AREA INCLUDING PP. COMMON AREAS	159,35 m ²

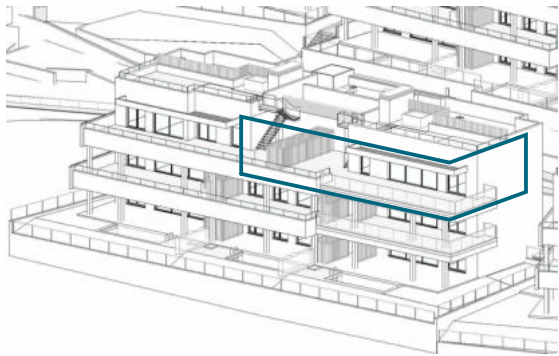
EXTERNAL AREAS	
Covered laundry room	4,07 m ²
Covered terrace	54,97 m ²
Uncovered terrace	15,51 m ²
EXTERNAL USEFUL FLOOR AREA	74,55 m ²

REGARDING DECRETO BOJA 218/2005	
TOTAL USEFUL FLOOR AREA	116,03 m ²
TOTAL BUILT AREA	169,90 m ²

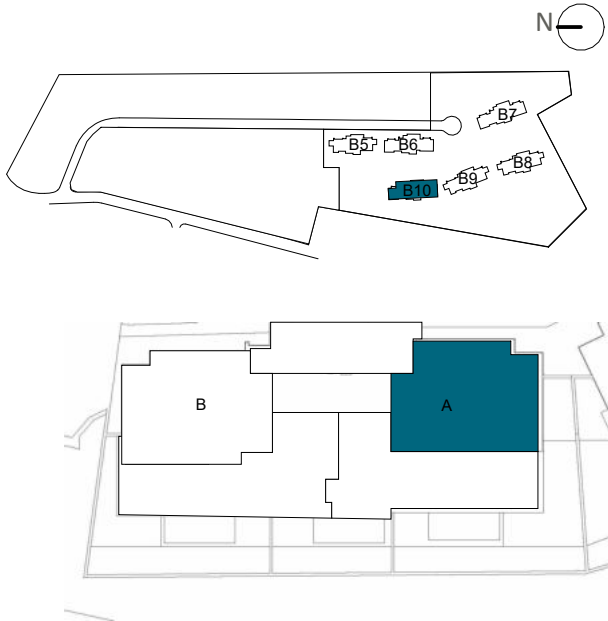
Apartment 101C

The information contained may be modified during the course of the work execution due to technical or legal requirements, without implying any reduction in the overall level of qualities. The access steps to the dwelling and exits to courtyards may be altered according to the level of the streets and it is up to the D.F. to set the criteria.

1 m 2 m 3 m 4 m 5 m



LOCATION



BLOCK 10

APPROXIMATE AREAS

Entrance	2,56 m ²
Living room - Kitchen	46,65 m ²
Hall	3,02 m ²
Master Bedroom	17,65 m ²
Master bathroom	6,49 m ²
Bedroom 2	12,76 m ²
Bedroom 3	12,32 m ²
Bathroom 2	4,88 m ²
INTERNAL USEFUL FLOOR AREA	106,33 m²

INTERNAL BUILT AREA	125,38 m²
P.P. COMMON AREAS	37,08 m²
INTERNAL BUILT AREA INCLUDING PP. COMMON AREAS	162,46 m²

EXTERNAL AREAS	
Uncovered laundry room	5,01 m ²
Terrace pergola	19,46 m ²
Uncovered terrace	96,15 m ²
EXTERNAL USEFUL FLOOR AREA	120,62 m²

USEFUL FLOOR AREA SOLARIUM	59,36 m²
-----------------------------------	----------------------------

REGARDING DECRETO BOJA 218/2005	
TOTAL USEFUL FLOOR AREA	116,96 m²
TOTAL BUILT AREA	173,09 m²

Penthouse 102A

The information contained may be modified during the course of the work execution due to technical or legal requirements, without implying any reduction in the overall level of qualities. The access steps to the dwelling and exits to courtyards may be altered according to the level of the streets and it is up to the D.F. to set the criteria.

The pool represented in the commercial plan of the solarium floor, and infographics, is not included in the project, nor in the sale price. It is an option for buyers, the cost of which will be added to the purchase price.