

CERQUILLA 10

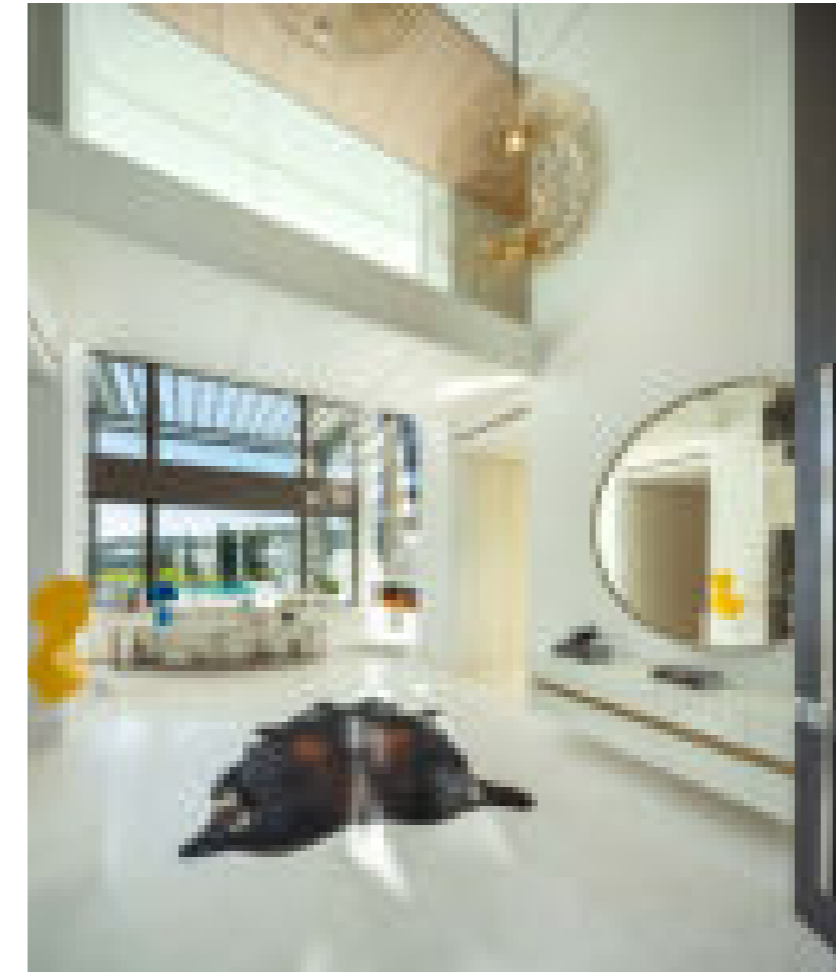


A LUXURIUS ESTATE LOCATED IN
THE PRESTIGIOUS NEIGHBOURHOOD
OF LA CERQUILLA.

Welcome to Cerquilla 10, a cutting-edge estate in one of Marbella's
most exclusive residential communities, La Cerquilla.



Beds: 7 | **Baths:** 7+3 | **Plot:** 2.342 m² | **Built:** 1.033 m² | **Terraces:** 410 m² | **Pool:** Private | **Parking:** 4 | **Orientation:** S



OPEN-PLAN LIVING AREA

Cerquilla 10 is a luxurious home boasting a stunning open-plan layout, optimised for comfort and offering the latest design trends.





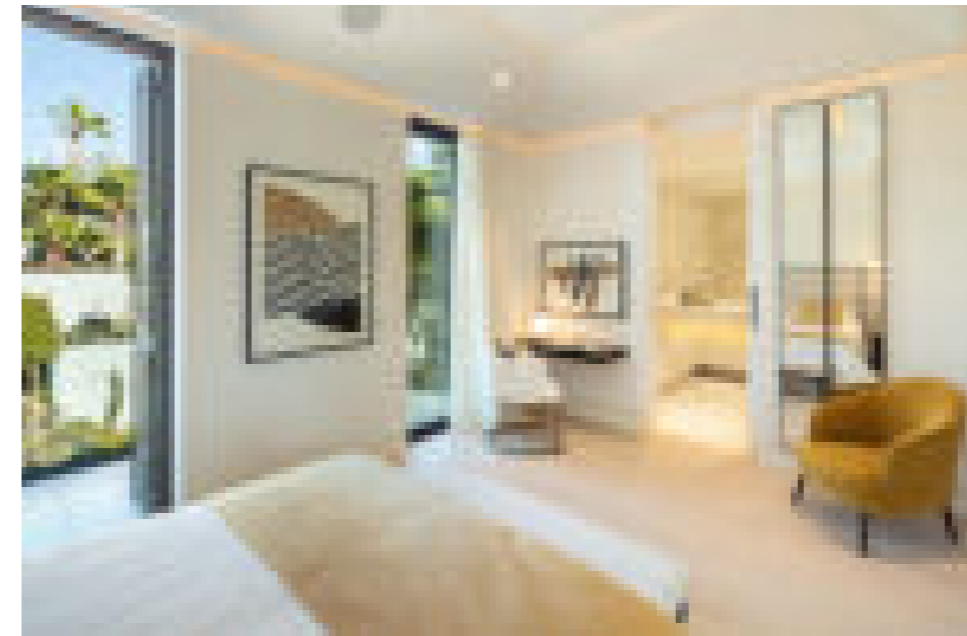
Designed by renowned Tobal Architects and exquisitely furnished by respected Pedro Peña, Cerquilla 10 is a true masterpiece and probably the most luxurious mansion currently built in La Cerquilla.



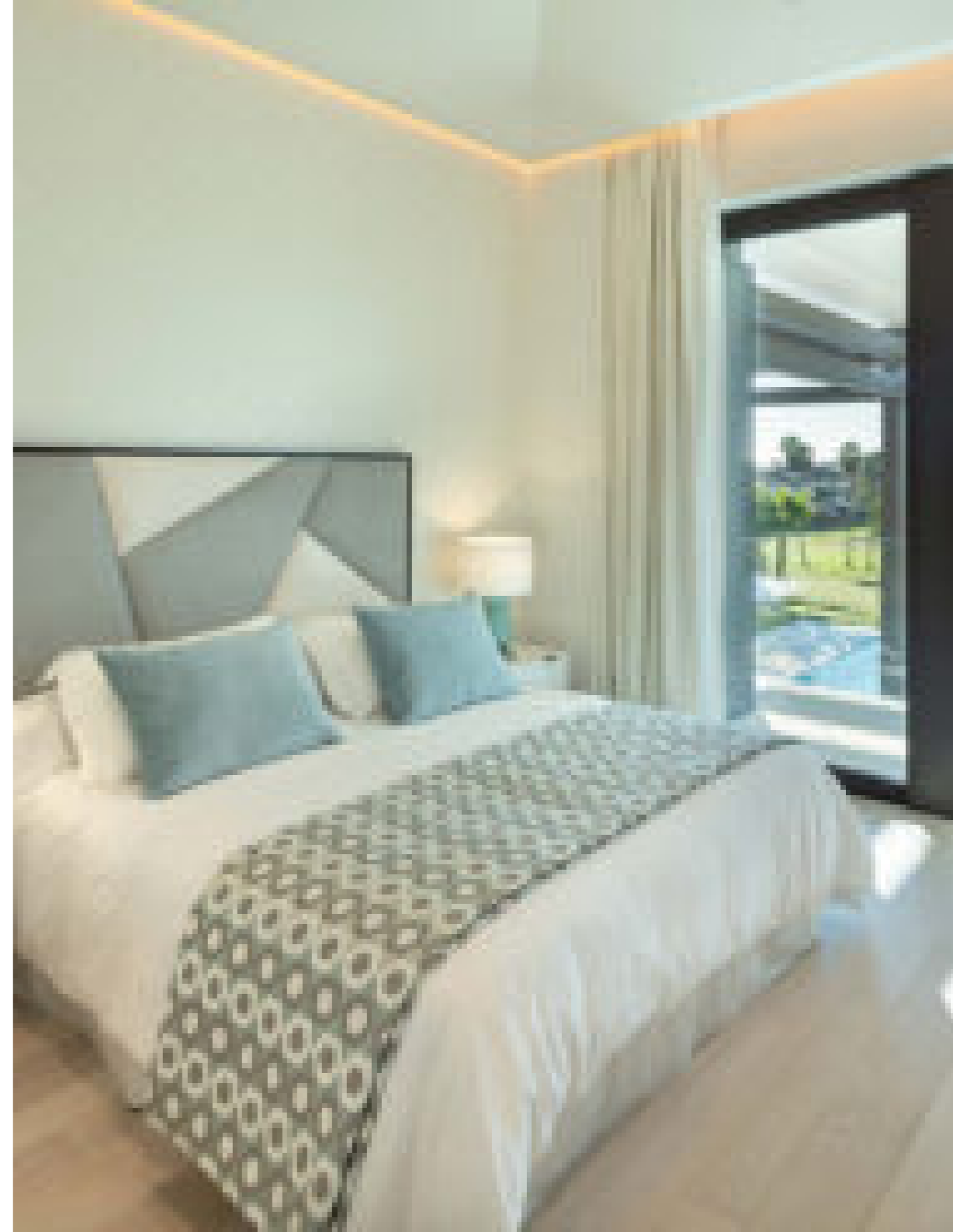
MASTER ROOM

Cerquilla 10 has been designed to impress the most discerning buyer and will take your breath away as soon as you step in.







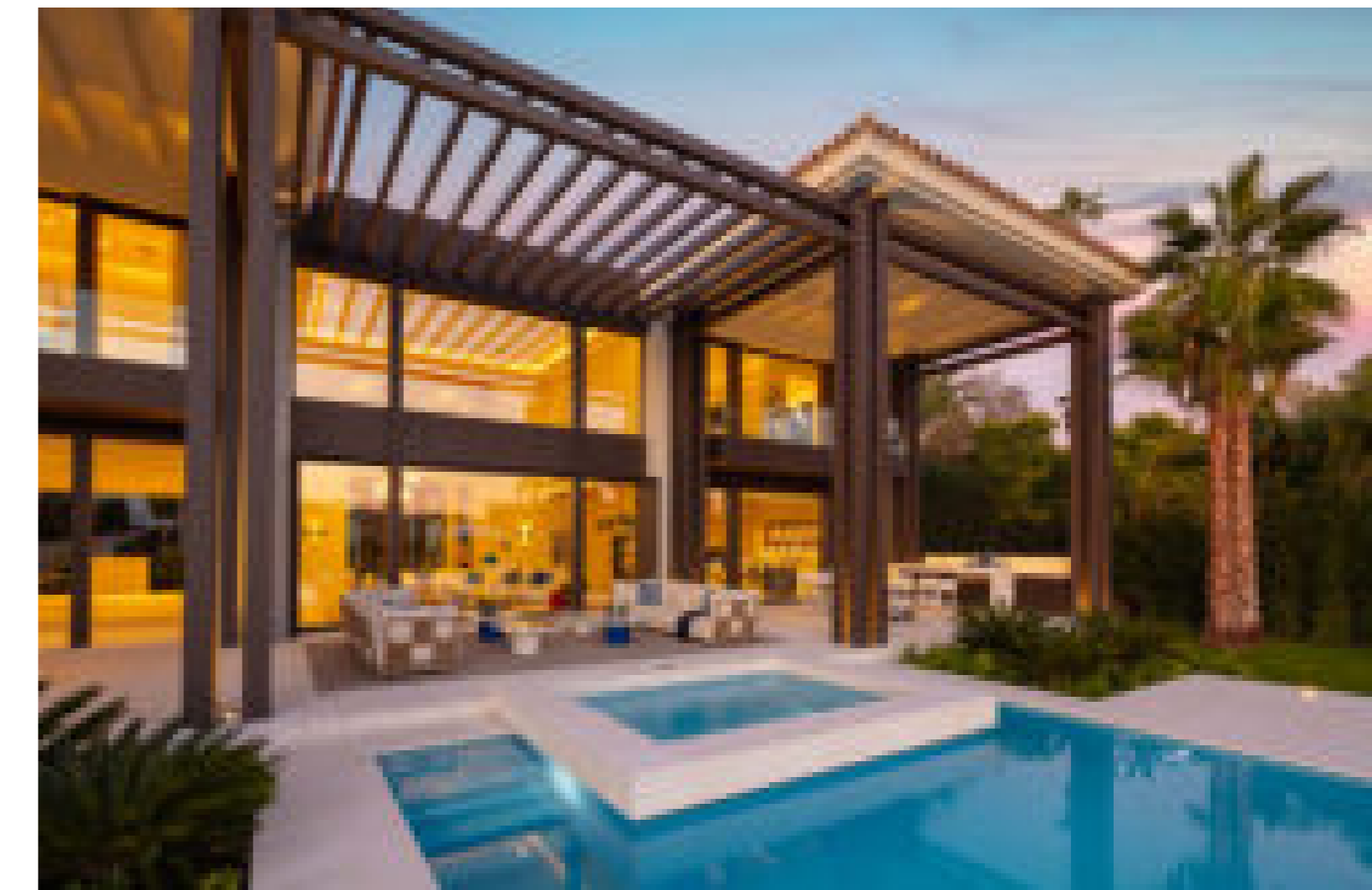




STATE-OF-THE-ART

Among its luxurious features we can highlight a state-of-the-art cinema, yoga & gym room, heated pool and Jacuzzi, children play room, the latest domotic technology, separate staff apartment, main gourmet kitchen and chef's kitchen.





FRONTLINE GOLF

This frontline golf mansion in the heart of the Golf Valley, is set on a private plot with picturesque views to the greens of Los Naranjos Golf Course.







A PERFECT HOME IN A PRIME LOCATION

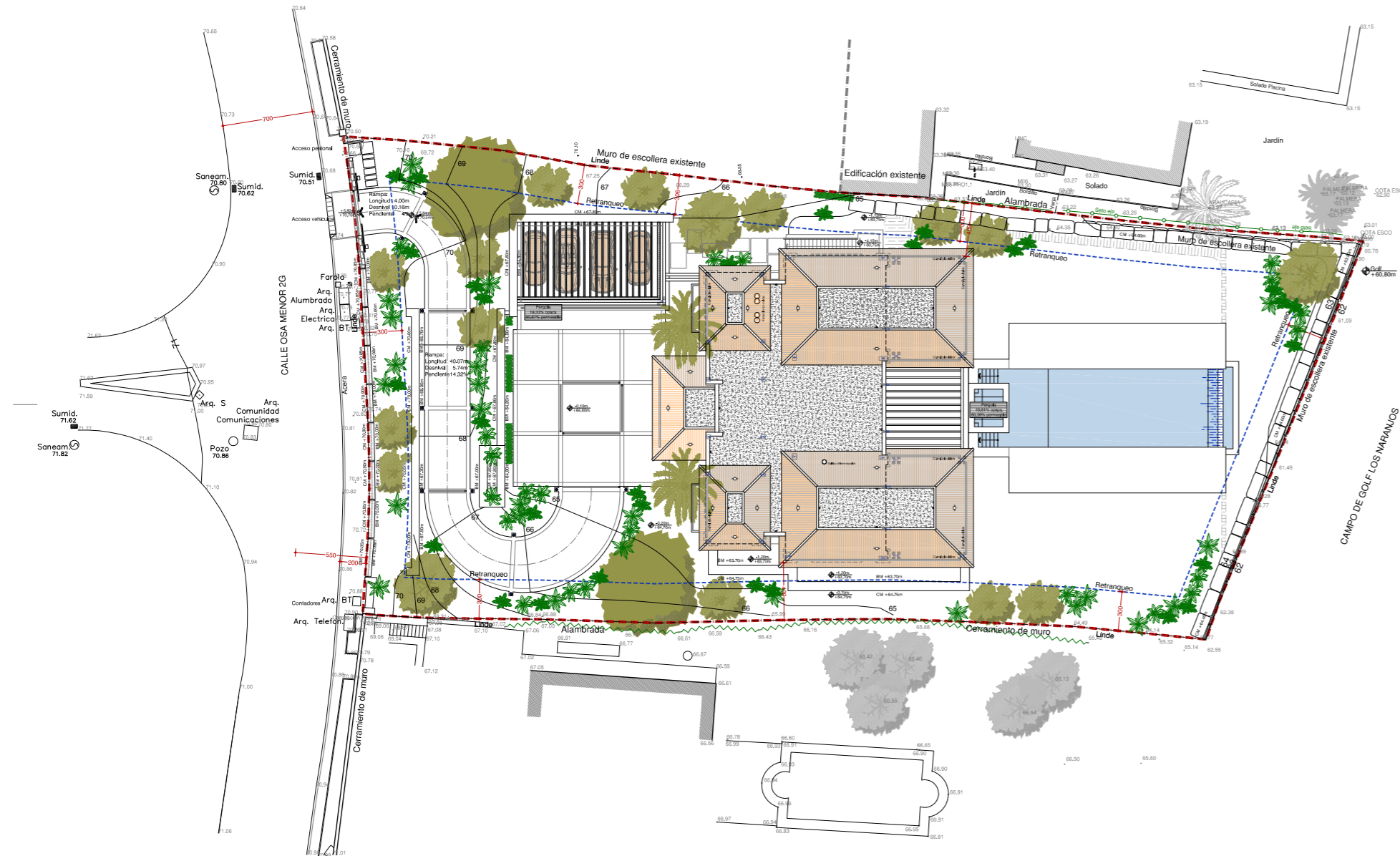
Nueva Andalucía is the area immediately north of Puerto Banus. It is often referred to as the 'Golf Valley' because there are 5 Golf Courses here; Las Brisas, Los Naranjos, Aloha, La Dama de Noche & La Quinta. At La Dama de Noche you can even play golf at night, as the course is lit up.





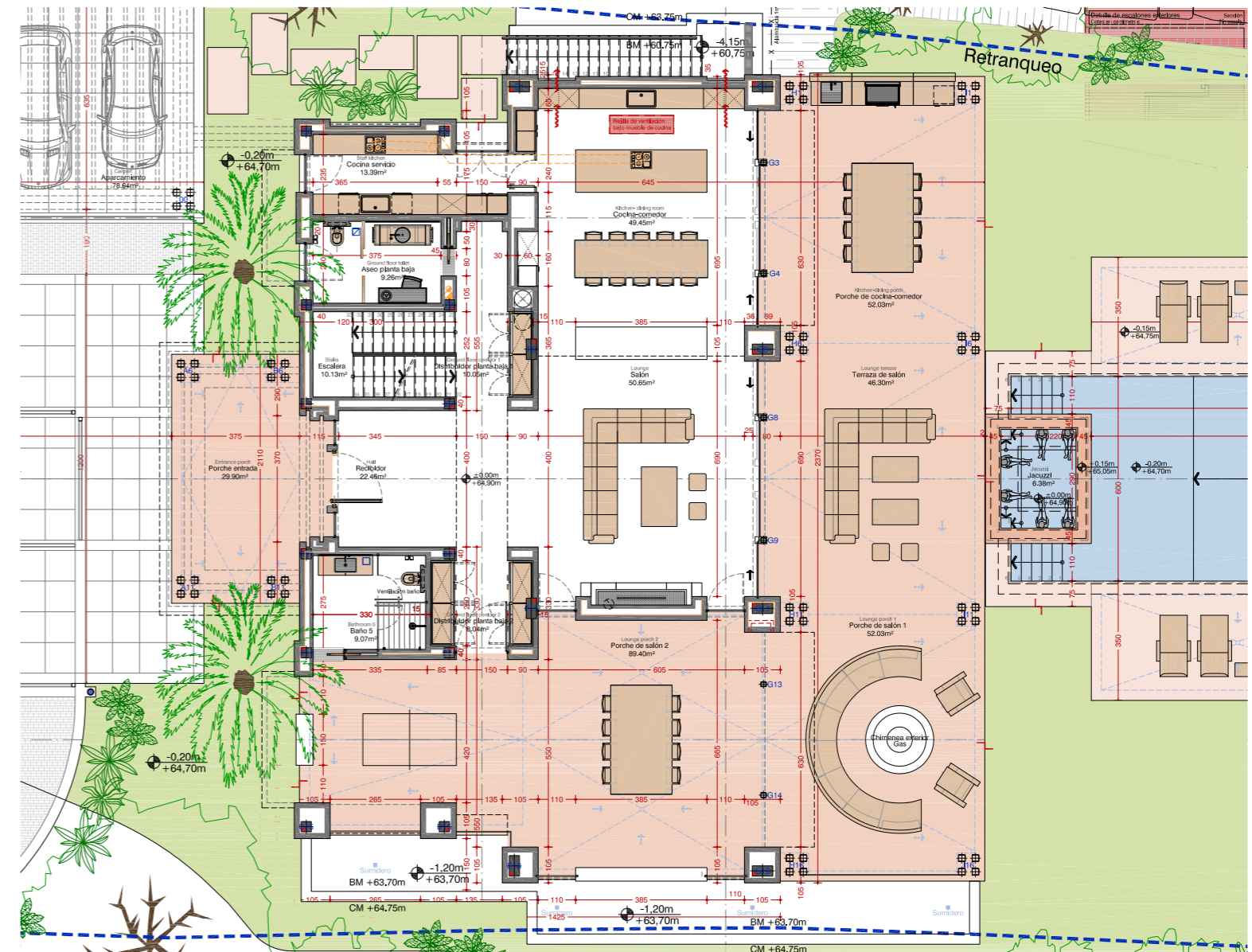
These golf courses provide a very green feeling, which coupled with the beautiful mountains in the background and the blue Mediterranean Sea in front; it truly is the ideal setting.

Plot



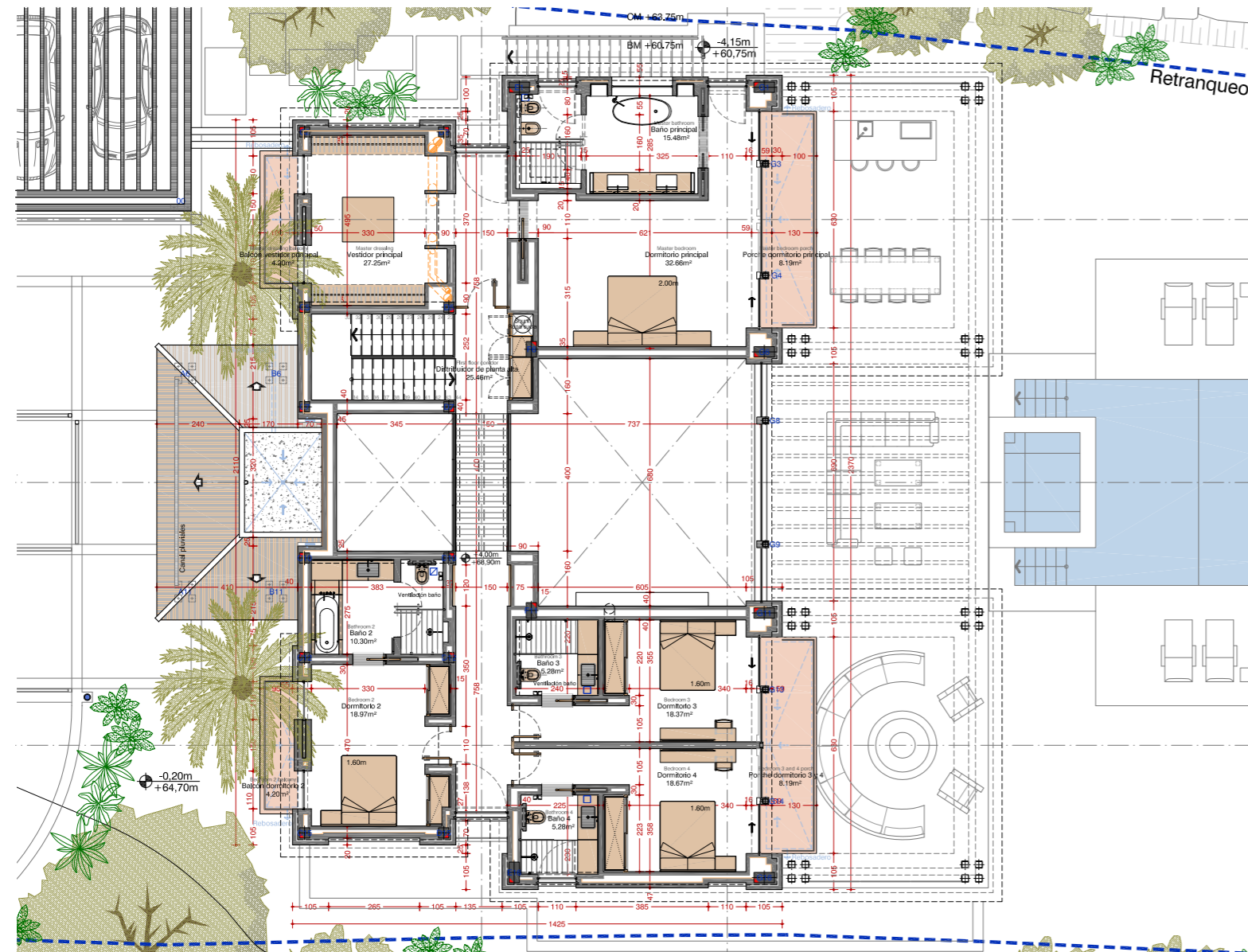
Beds: 7 | Baths: 7+3 | Plot: 2.342 m² | Built: 1.033 m² | Terraces: 410 m² | Pool: Private | Parking: 4 | Orientation: S

Ground



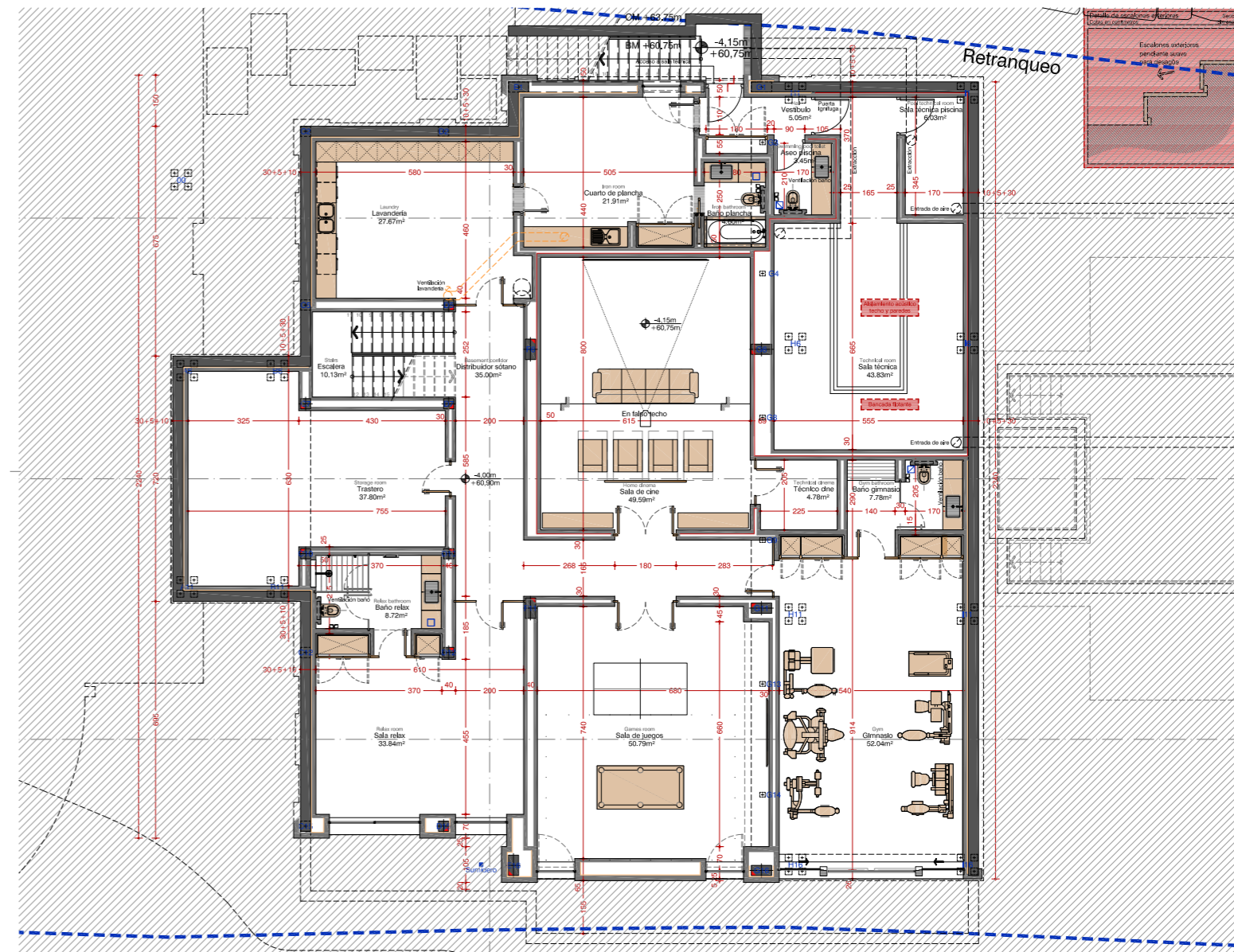
Beds: 7 | Baths: 7+3 | Plot: 2.342 m² | Built: 1.033 m² | Terraces: 410 m² | Pool: Private | Parking: 4 | Orientation: S

First



Beds: 7 | Baths: 7+3 | Plot: 2.342 m² | Built: 1.033 m² | Terraces: 410 m² | Pool: Private | Parking: 4 | Orientation: S

Basement



Beds: 7 | Baths: 7+3 | Plot: 2.342 m² | Built: 1.033 m² | Terraces: 410 m² | Pool: Private | Parking: 4 | Orientation: S

Quality Specifications

FLOORS, WALLS AND TERRACES

- Foundation executed with reinforced concrete slab. Reinforced concrete walls. Waterproofed with Texsa waterproofing sheet, protected with a layer of drentex drainage.
- Reinforced concrete structure reticular slabs and post-tensioned slab.
- Exterior enclosures made with solid perforated brick with projection of polyurethane foam to the inner chamber, as thermal insulation.
- Exterior coating with waterproof mortar and premium elastomeric exterior paint quality.
- Waterproofed roofs with polyurea projection creating a continuous membrane, and thermally insulated by rigid polyurethane foam with density minimum 45 kg / m³ and average thickness 8 cm.
- Brickwork in perlite lined interior partitions and paint finished premium washable plastic.

INTERNAL CARPENTRY

- General interior plaster ceilings, with curtains, pits, mouldings and footlights illuminated with LED strips.
- Wooden ceilings with oak veneer boards.
- Interior and exterior marble flooring at Casa Tino Piedra CREMA PREMIUM Domus finish indoors and zero finish outdoors, in 120x90 and 60x45 formats and to the cutting.
- Countertops with colour lacquered wooden furniture.
- Wood flooring made with glued flooring multi-format groove with different widths, variable widths 140, 190, 230, 290 and 340 mm and variable lengths and selected knotless finish.
- Aluminium joinery: Schüco International, Series ASS50

is for sliding leaf and AWS 65 on swinging, tilt-and-turn leaves. All with thermal break, colour lacquered Brun Sable and glass 4+4 Planitherm // 12 mm air chamber // 4+4 Colourless)

- Folding or sliding interior doors embedded between partitions, made of wood oak veneer and lacquered, high quality concealed hinges and handles.
- Lacquered wood cabinets, shelves, hanging rails, drawers with closing guides retarded and lined with tessuto melanin.
- Maestreadas security lock.
- Glass railings embedded in work with security glass of 10+10 mm.
- Bath screens in laminated safety glass 6+6 mm and extra 8 mm tempered clear master bathroom.
- Metal pergolas made with structural profiles.

EXTERIOR

- Fully fenced plot and concrete walls.
- Gardens with automatic irrigation.
- Platforms and access ramps executed with a curb of granite tiles 40x40x5 and 5x5x5 granite pavers.
- Motorized vehicle door.

SWIMMING POOL

- Saline electrolysis treatment equipment and PH control of the CILLIT brand.
- ESPA brand pool pumps.
- Star pool filters from AQUARAMA.
- BISAZZA 2x2 tile interior cladding.
- Pool cascade edge in BISAZZA 2x2 tile.
- Air conditioning with SCP brand heat pumps.

JACUZZI

- CILLIT pH regulation and salt chlorination automatic dosing equipment.
- AQUARAMA brand pool filters.
- ESPA brand pool pumps.
- Air / water massage jets and air blowing nozzles with 4 positions.

SANITATION AND PLUMBING

Sanitation

- ITALSAN Triplus Acoustic Insulated PVC Pipe.
- Large drainage underground sanitation LISA tile colour.

Plumbing

- General network and interior water distribution with cross-linked Polyethylene PEX pipe, from the UPONOR brand, insulated with ISOPIPE shell.

Water treatment

- CILLIT brand compact water softening equipment and inlet filter particular of the CILLIT brand.
- Hydropneumatic double pressure group for drinking water of the ESPA brand with boiler 100 l membrane.
- Hydropneumatic pressure group for irrigation of the ESPA brand with membrane boiler 100 l.
- Control of solenoid valves for automatic filling of water from the network.
- High density polyethylene tanks, SCHUTZ brand for accumulation of 3,000l for drinking water and 3.000l for irrigation water.

BATHROOMS

- Bathrooms with marble cladding from Casa Tino

Natural Stone CREMA PREMIUM finish Domus exploded.

- Backpack toilets and marble countertops area of Casa Tino Natural Stone CREMA PREMIUM.
- Showers executed with marble from Casa Tino Natural Stone CREMA PREMIUM.
- VILLEROY BOCH brand toilets.
- TRASS, GRAFF and HANSGROHE brand taps.

KITCHEN

- BOFFI kitchen brand with SNAIDERO brand in the “dirty” kitchen.

AIR CONDITIONING, HEATING AND ELECTRICITY

Air conditioning

- DAIKIN VRV air conditioning system, with ducted indoor units.
- DAIKIN split AIR / AIR air conditioning system in laundry area, service apartment, service kitchen and cinema facilities room.
- Air diffusion with linear grilles of the MADEL brand and diffusers in the dining room-kitchen of the MADEL brand.
- VRV outdoor units.
- CLIMAVER NETO brand air ducts.
- DAIKIN centralized control for the management and control of the air conditioning system.
- Control of air conditioning system by Domotics with CoolMaster.

Heating

- Underfloor heating system, with self-fixing panels and Polyethylene tube.
- Reticulated evalPEX, from the UPONOR brand.

- Control of the air conditioning system by KNX Domotics and CONTROL4.
- UPONOR brand motorized boxes, manifolds and valves.
- Water distribution network with Crosslinked Polyethylene Pipe EvalPEX, of the brand.
- UPONOR insulated with shell.

Electricity

- GIRA electrical mechanism and KNX EKINEX push-buttons.
- Electrical installation according to Low Voltage Electrotechnical Regulations.
- Protection elements in the electrical panel of the SCHNEIDER brand.
- Home automation lighting control with KNX.
- Circuit regulations with DALI system.

Air extraction and renewal

- Individual air extraction in bathrooms and machine rooms with extractors of ducts of the brand SOLER & PALAU.

INTERIOR / EXTERIOR LIGHTING

- Indoor and outdoor lighting with energy saving lamps.
- Lighting from the brand AMCPROJEC, LINEA LIGHT, DELTA LIGHT, BPM, FARO, ASTA POOL, WEBER DUCRE, LOMBARDO etc.
- Lighting by DALI system with KNX home automation control.

DATA NETWORK

- Data distribution network wired CAT.6 and brand WI-FI points ARAKNIS.

- ADD JUST POWER brand video distribution network.
- ZENKTOR brand audio distribution network, amplification and audio control for LEXICON brand movie theater.

ALARM INSTALLATION

- Alarm installation including tube and wiring for presence detectors, magnetic contactors for exterior carpentry and surveillance cameras.
- PARADOX EVO brand home interior alarm system.
- OPTEX brand home exterior alarm system.
- SAFIRE surveillance cameras.

HOME AUTOMATION

- Climate control system.
- KNX lighting control system for DALI.
- CONTROL4 display programming.
-

PROPANE GAS INSTALLATION

- Installation of a 1.000l underground propane gas tank.
- Exterior distribution with polyethylene pipes.
- Interior distribution with copper pipes sheathed in PVC pipe.
- Gas installation to supply the living room fireplace, outdoor fire and BBQ.

OTHER

- Gas fireplace in living room and outside fire.
- Sheet metal chute for dirty clothes between floors.



