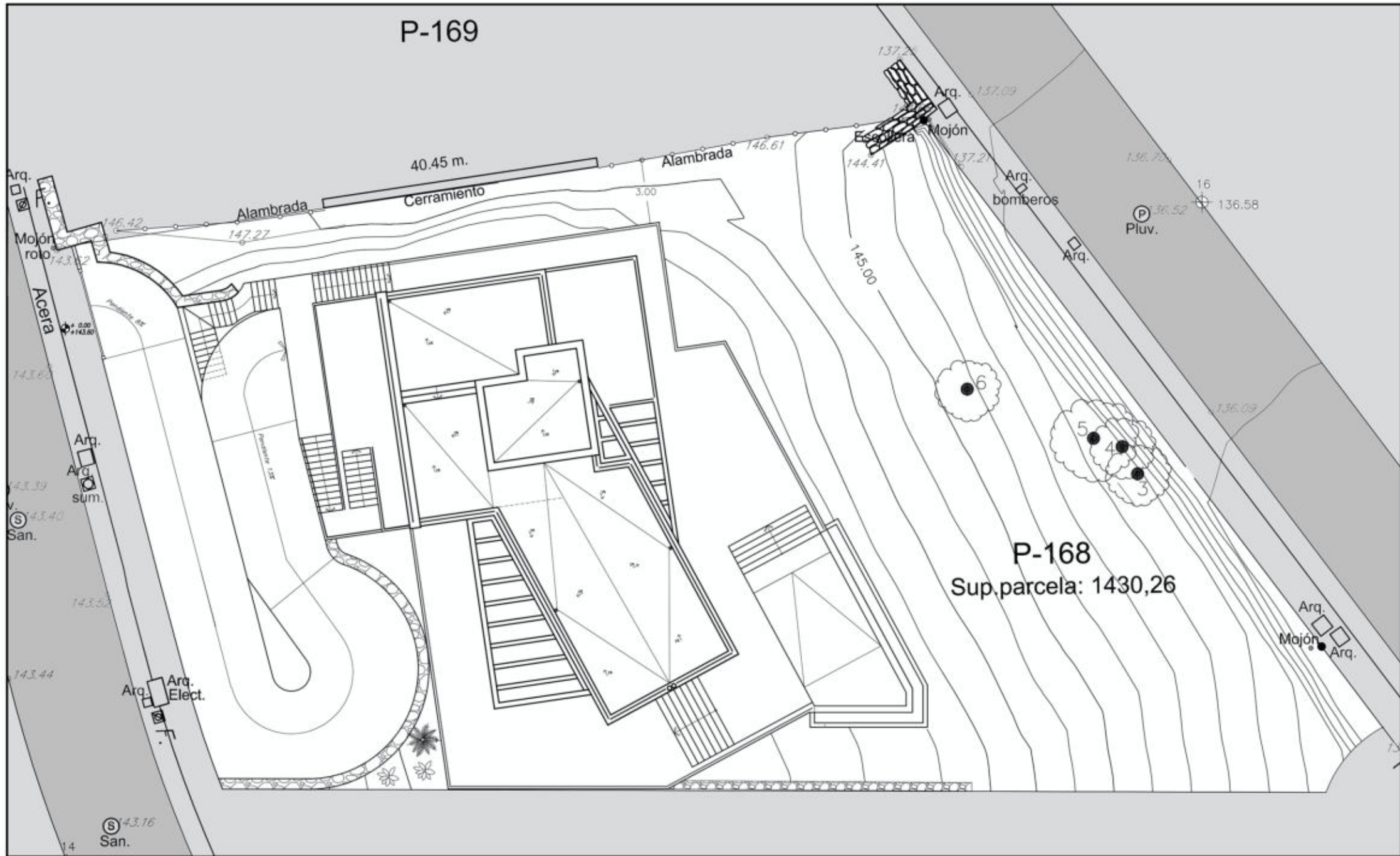
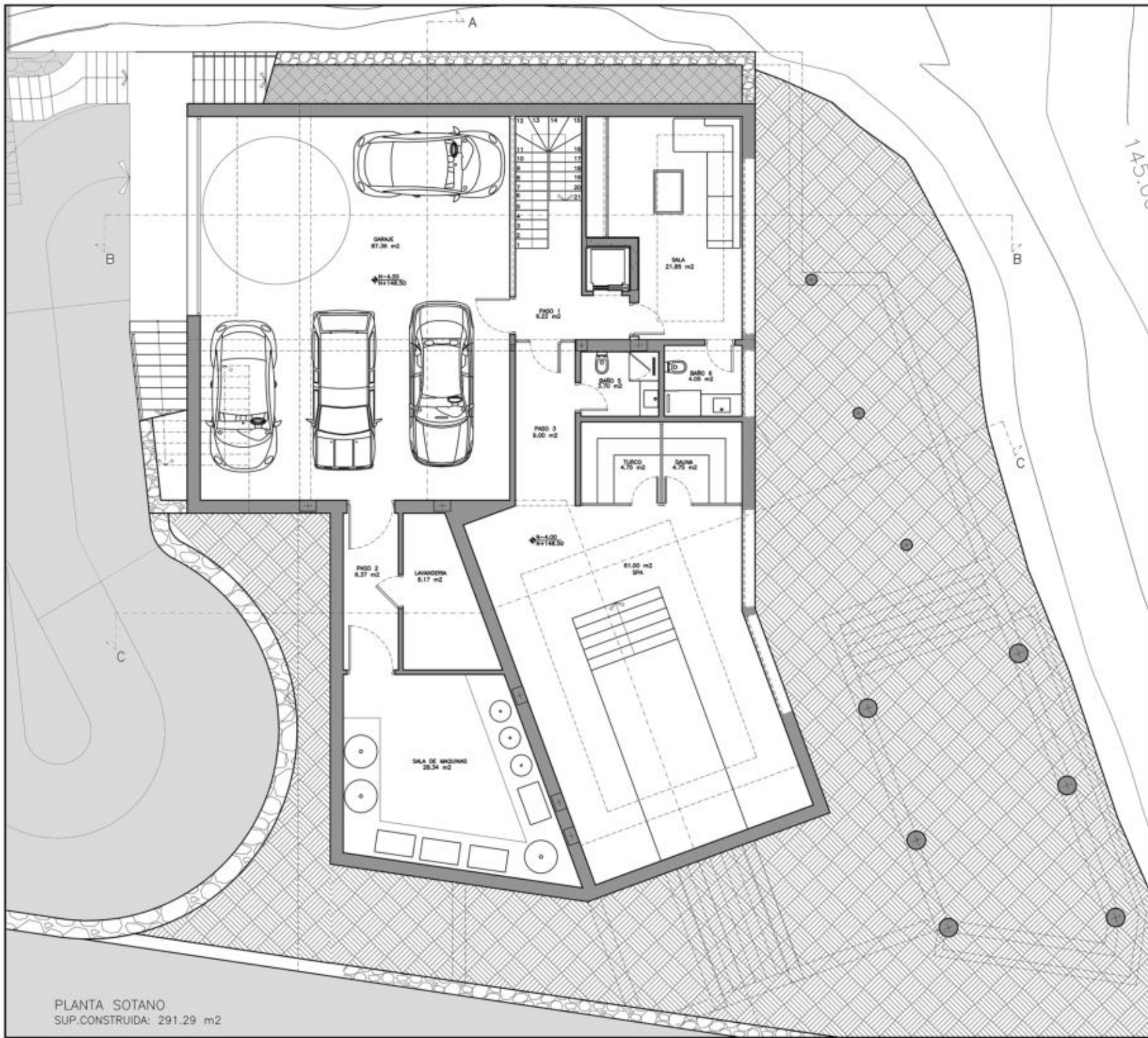


P-169

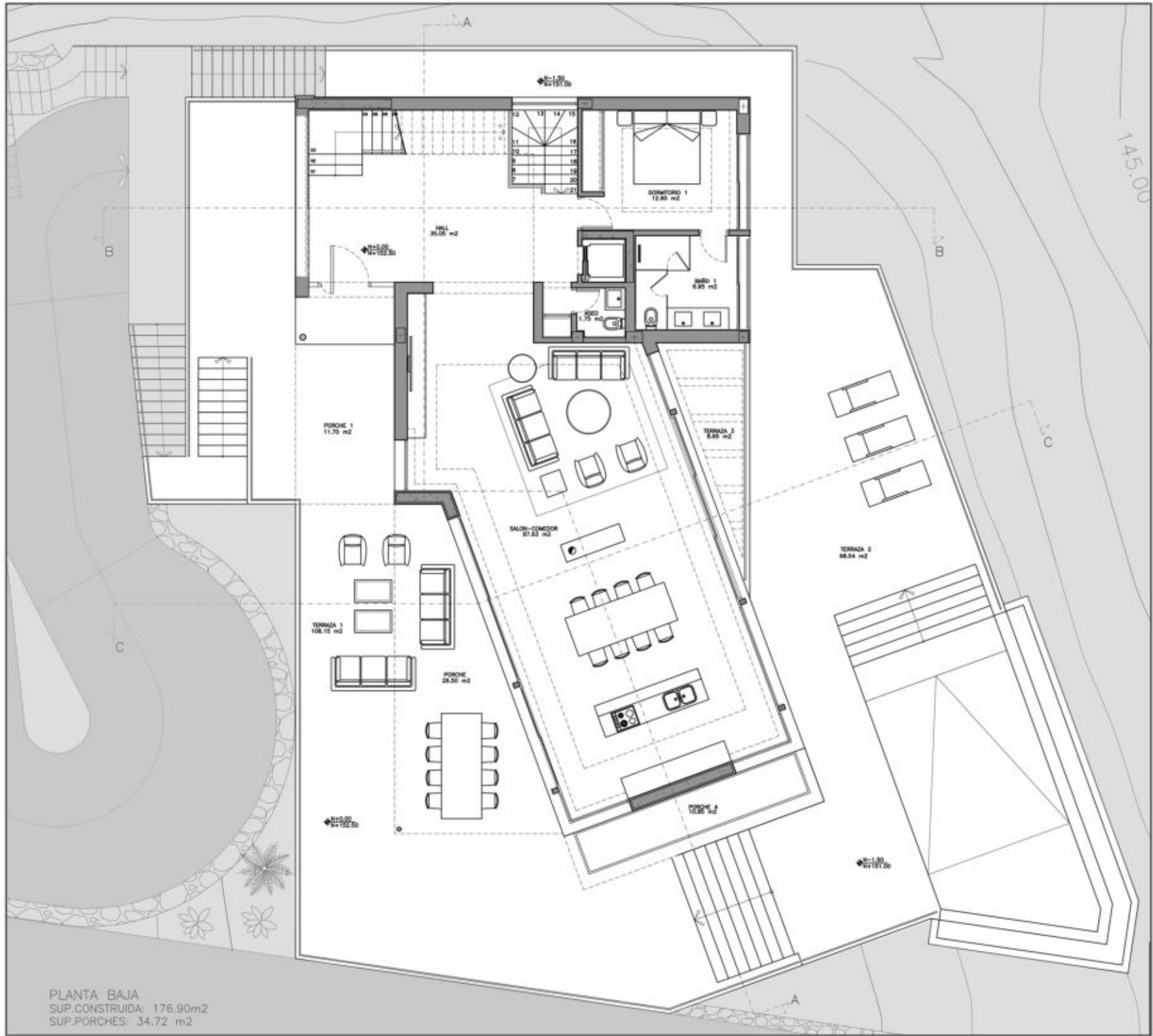


P-168
Sup. parcela: 1430,26

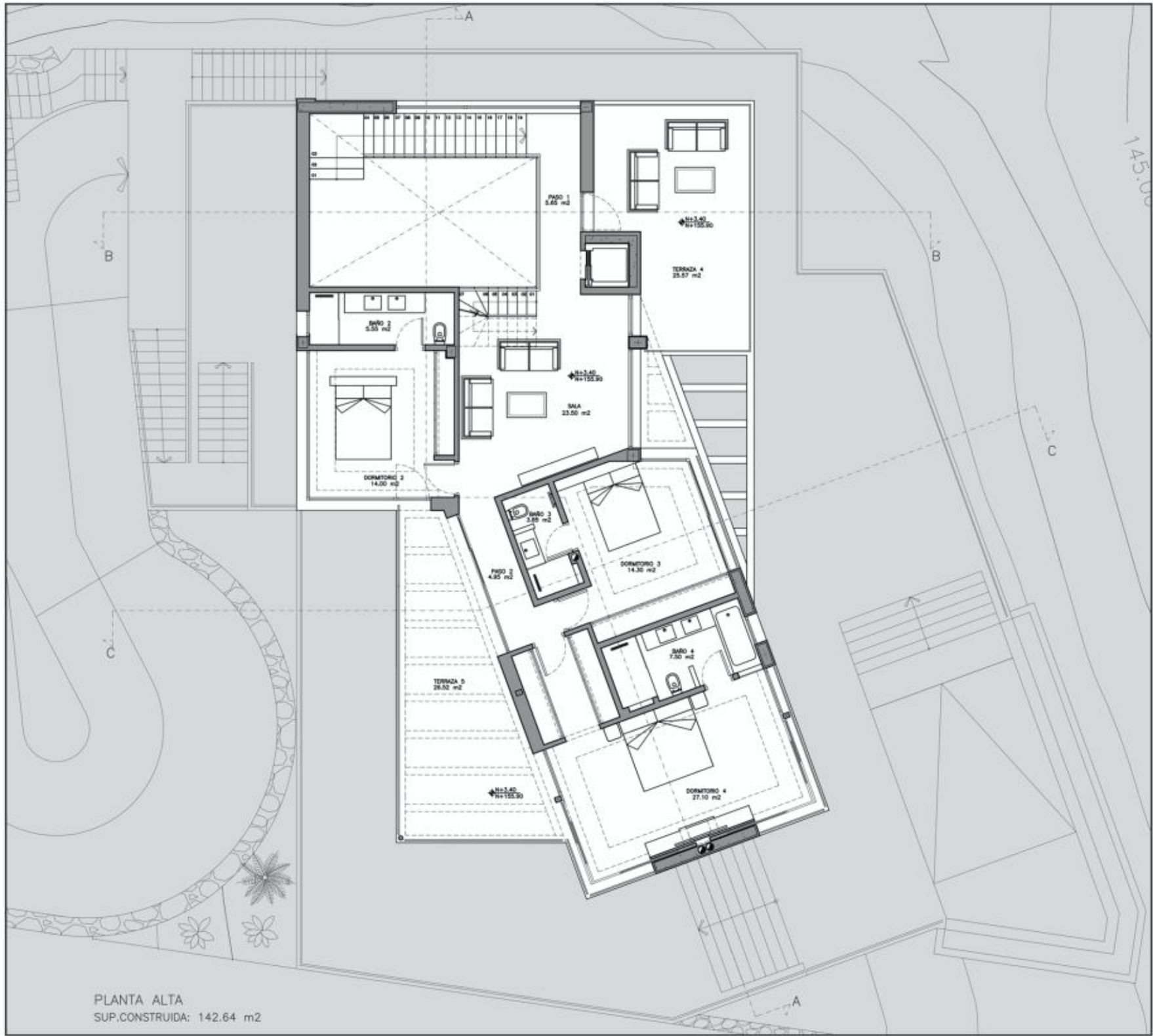
14
San. 143.16



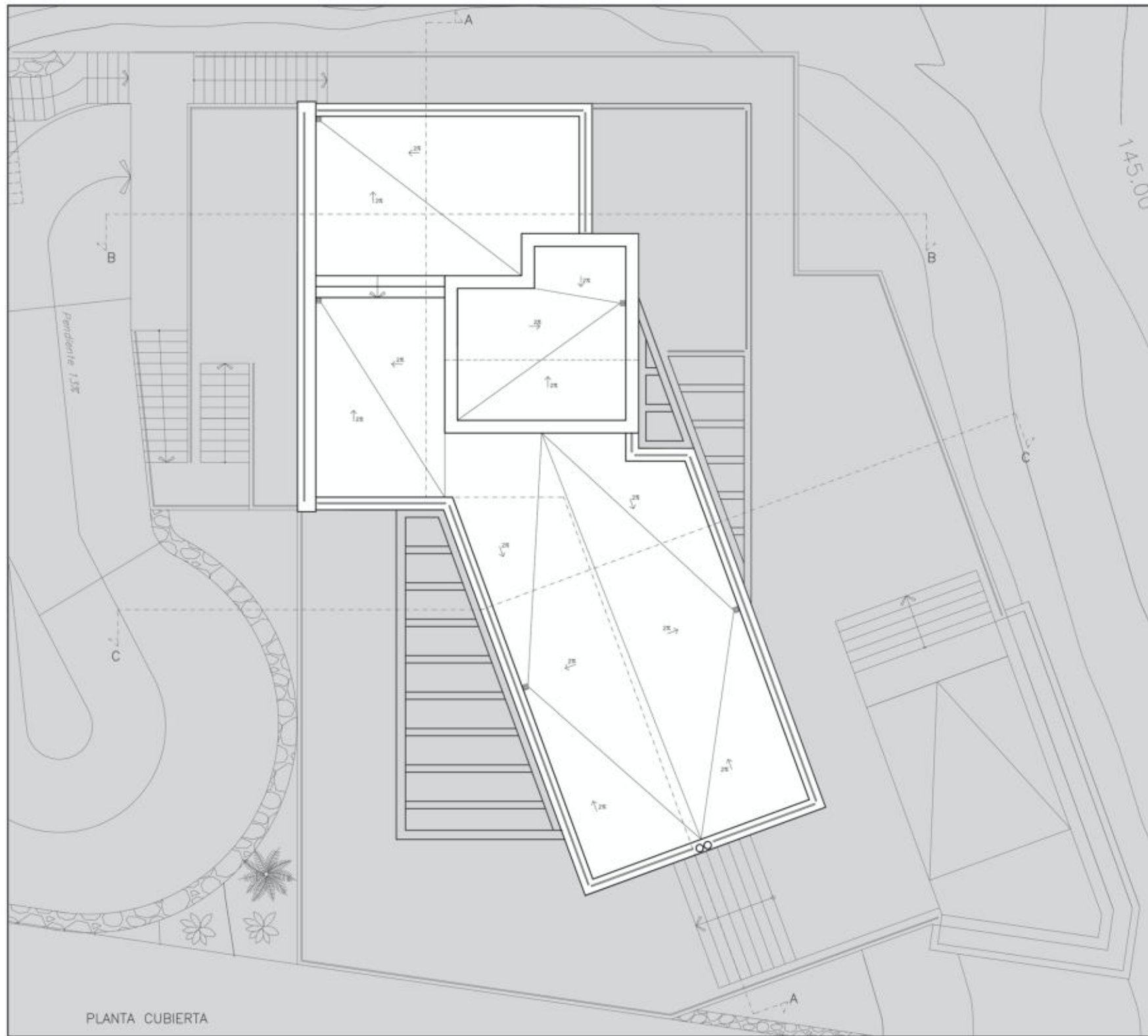
PLANTA SOTANO
 SUP. CONSTRUIDA: 291.29 m²



PLANTA BAJA
 SUP.CONSTRUIDA: 176.90m²
 SUP.PORCHES: 34.72 m²



PLANTA ALTA
 SUP.CONSTRUIDA: 142.64 m²



PLANTA CUBIERTA