

T/ERRA VIVA

DARGLOBAL



DIAMANTE VILLAS

6-BEDROOM RESIDENCES

BENAHAVÍS,
COSTA DEL SOL



DESIGN INSPIRED BY
AUTOMOBILI LAMBORGHINI

T/ERRA VIVA

DARGLOBAL



Tierra Viva Benahavís – Costa Del Sol, is an exclusive residential community of luxury villas, with design inspired by Automobili Lamborghini.

THE MYTH

Founded in 1963, Automobili Lamborghini is the epitome of luxury super sports cars made of innovative technology and futuristic lines. An Italian excellence that is still based in Sant'Agata Bolognese where it all started.

The true essence of Lamborghini DNA is represented in this futuristic and elegant architectural project complemented with interiors inspired by the super sports car design, thanks to incomparable craftsmanship and passion.

DARGLOBAL





DARGLOBAL



BENAHAVÍS, COSTA DEL SOL

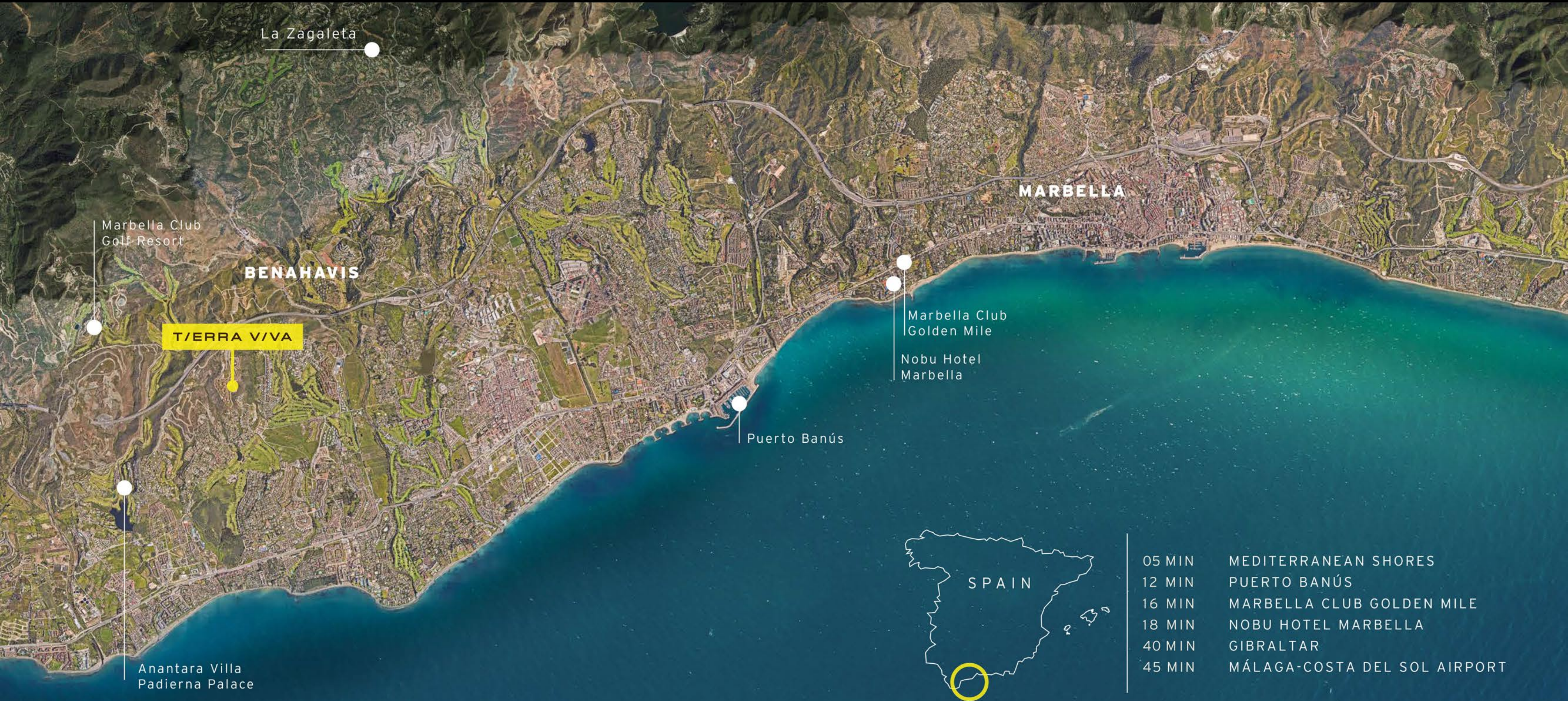
Benahavís ranks as one of the wealthiest municipalities in Spain thanks to the luxurious golf clubs and resorts that surround the area. In recent years, it has emerged as one of the most desirable locations on Costa del Sol to buy property, in a natural haven of peace and beauty within easy reach of Marbella.





COSTA DEL SOL

DARGLOBAL



La Zagaleta

Marbella Club
Golf Resort

BENAHAVIS

TIERRA VIVA

Anantara Villa
Padierna Palace

Puerto Banús

MARBELLA

Marbella Club
Golden Mile

Nobu Hotel
Marbella



SPAIN

- 05 MIN MEDITERRANEAN SHORES
- 12 MIN PUERTO BANÚS
- 16 MIN MARBELLA CLUB GOLDEN MILE
- 18 MIN NOBU HOTEL MARBELLA
- 40 MIN GIBRALTAR
- 45 MIN MÁLAGA-COSTA DEL SOL AIRPORT

T/ERRA V/VA

DARGLOBAL



DISCLAIMER: All pictures, plans, layouts, information, data and details included in this brochure are indicative only and may change at any time up to the final 'as built' status in accordance with final designs of the project, regulatory approvals and planning permissions. All accessories and interior finishes such as wallpaper, chandeliers, furniture, electronics, white goods, curtains, hard and soft landscaping, pavements, features, gym, and other elements displayed in the brochure, or between the plot boundary, are not part of the unit and are shown for illustrative purposes only.

T/ERRA V/VA

DARGLOBAL



DIAMANTE VILLAS

6-BEDROOM RESIDENCES



DIAMANTE VILLAS

Majestic and superb, the Diamante Villas are spread on four levels, host 6 bedrooms and know no compromises.

Spacious roof terraces with breath-taking Mediterranean Views are the perfect set for family and social gatherings, while the extensive swimming pool and luxuriant gardens make this villas the perfect setting for an unforgettable holiday that can last for a lifetime.



T/ERRA V/VA

/ DIAMANTE VILLAS

DARGLOBAL



T/ERRA V/VA

/ DIAMANTE VILLAS

DARGLOBAL



T/ERRA V/VA

/ DIAMANTE VILLAS

DARGLOBAL



T/ERRA V/VA

/ DIAMANTE VILLAS

DARGLOBAL





TIERRA VIVA MASTERPLAN

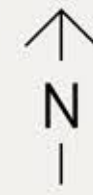
-  DIAMANTE VILLAS
6-bedrooms
-  ZAFIRO VILLAS
5-bedrooms
-  ESMERALDA VILLAS
4-bedrooms



GOLF VIEWS

SEA VIEWS ↘





DIAMANTE VILLAS

6 - BED

SQM 1,254 - 1,450

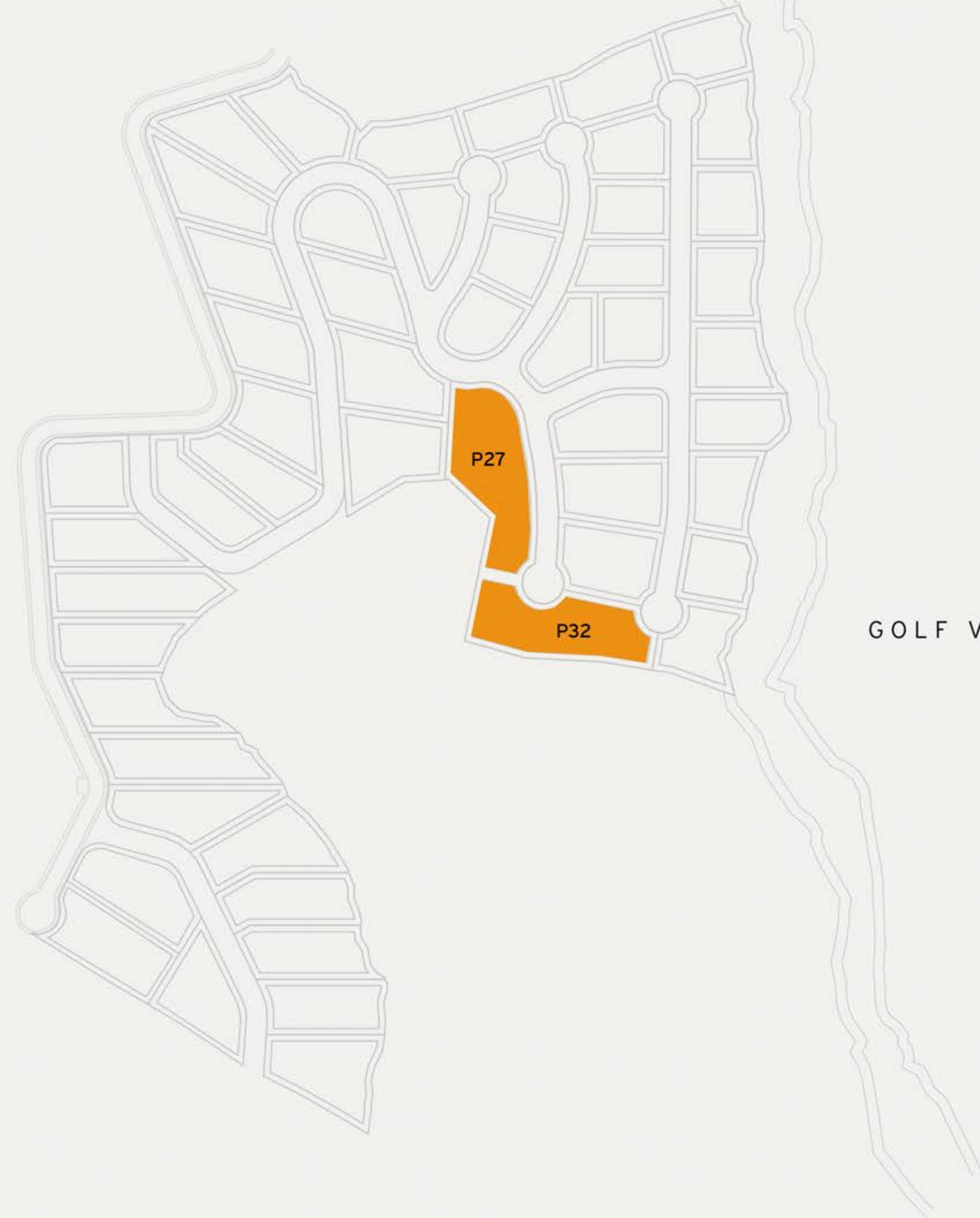
SQFT 13,498 - 15,608

Disclaimer: All pictures, plans, layouts, information, data and details included in this brochure are indicative only and may change at any time up to the final 'as built' status in accordance with final designs of the project, regulatory approvals and planning permissions. All accessories and interior finishes such as wallpaper, chandeliers, furniture, electronics, white goods, curtains, hard and soft landscaping, pavements, features, gym, and other elements displayed in the brochure, or between the plot boundary, are not part of the unit and are shown for illustrative purposes only.

PLOT SIZE / SQM 2,476 - 2,881

SQFT 26,651 - 31,011

Including total indoor & outdoor built up area.



GOLF VIEWS

SEA VIEWS



T/ERRA VIVA

DARGLOBAL



DIAMANTE VILLAS

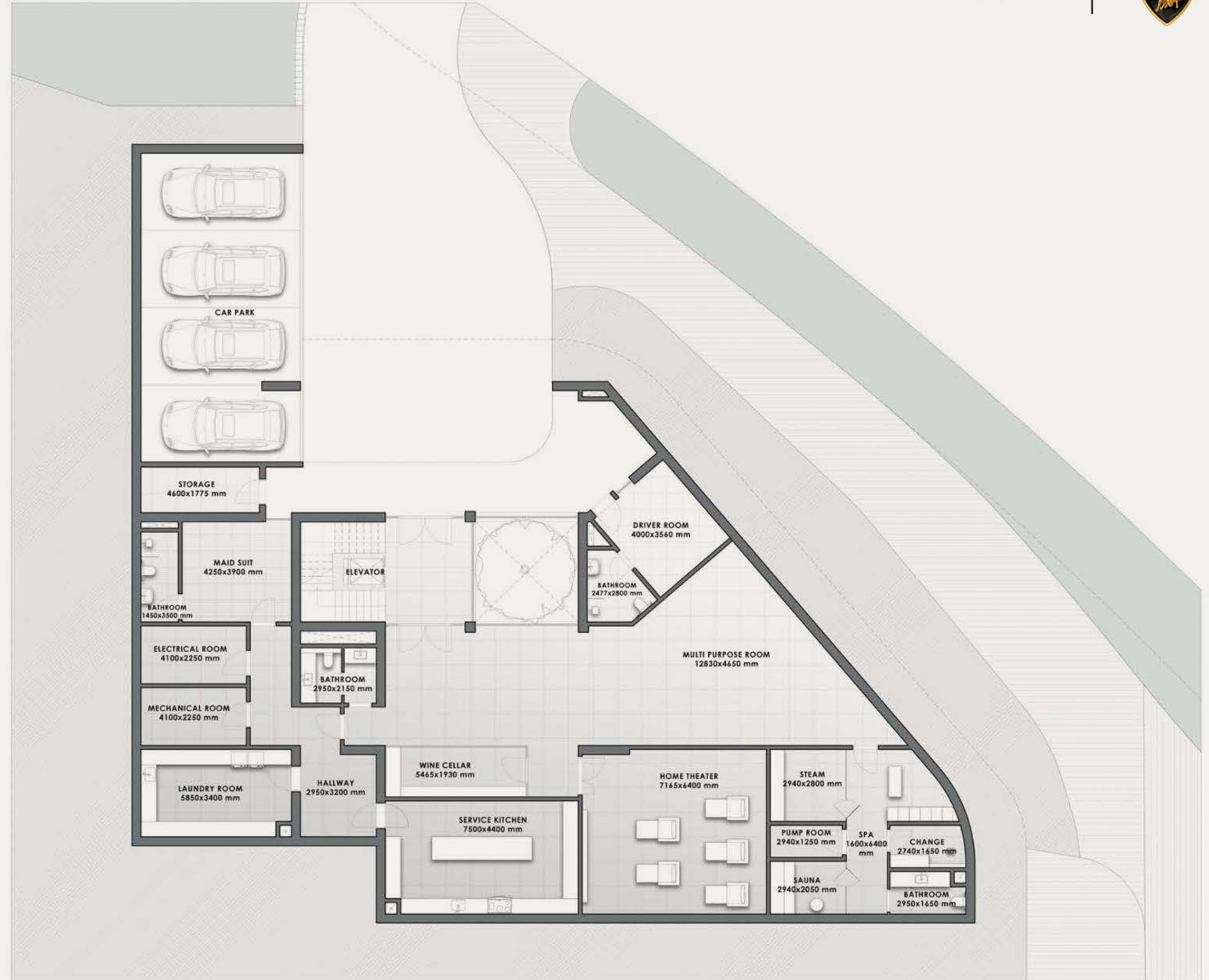
6 - BED	SQM 1,254 - 1,450
	SQFT 13,498 - 15,608

PLOT SIZE	
SQM	2,476 - 2,881
SQFT	26,651 - 31,011

Including total indoor & outdoor built up area.



BASEMENT



Disclaimer: All pictures, plans, layouts, information, data and details included in this brochure are indicative only and may change at any time up to the final 'as built' status in accordance with final designs of the project, regulatory approvals and planning permissions. All accessories and interior finishes such as wallpaper, chandeliers, furniture, electronics, white goods, curtains, hard and soft landscaping, pavements, features, gym, and other elements displayed in the brochure, or between the plot boundary, are not part of the unit and are shown for illustrative purposes only.



DIAMANTE VILLAS

6 - BED	SQM 1,254 - 1,450
	SQFT 13,498 - 15,608

PLOT SIZE	
SQM	2,476 - 2,881
SQFT	26,651 - 31,011

Including total indoor & outdoor built up area.



GROUND FLOOR



Disclaimer: All pictures, plans, layouts, information, data and details included in this brochure are indicative only and may change at any time up to the final 'as built' status in accordance with final designs of the project, regulatory approvals and planning permissions. All accessories and interior finishes such as wallpaper, chandeliers, furniture, electronics, white goods, curtains, hard and soft landscaping, pavements, features, gym, and other elements displayed in the brochure, or between the plot boundary, are not part of the unit and are shown for illustrative purposes only.



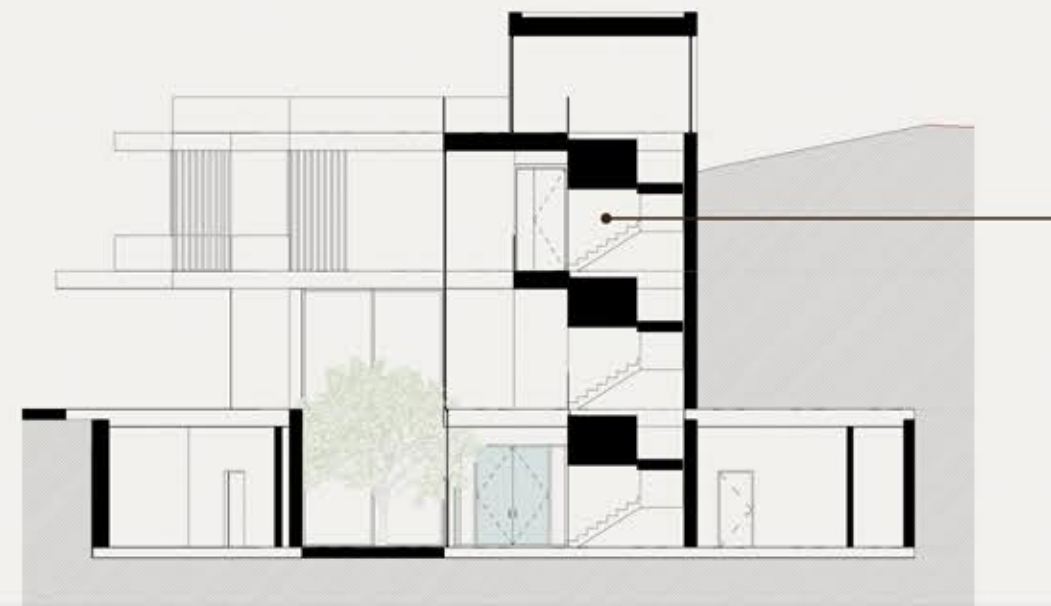
DIAMANTE VILLAS

6 - BED	SQM 1,254 - 1,450
	SQFT 13,498 - 15,608

PLOT SIZE

SQM	2,476 - 2,881
SQFT	26,651 - 31,011

Including total indoor & outdoor built up area.



FIRST FLOOR

Disclaimer: All pictures, plans, layouts, information, data and details included in this brochure are indicative only and may change at any time up to the final 'as built' status in accordance with final designs of the project, regulatory approvals and planning permissions. All accessories and interior finishes such as wallpaper, chandeliers, furniture, electronics, white goods, curtains, hard and soft landscaping, pavements, features, gym, and other elements displayed in the brochure, or between the plot boundary, are not part of the unit and are shown for illustrative purposes only.



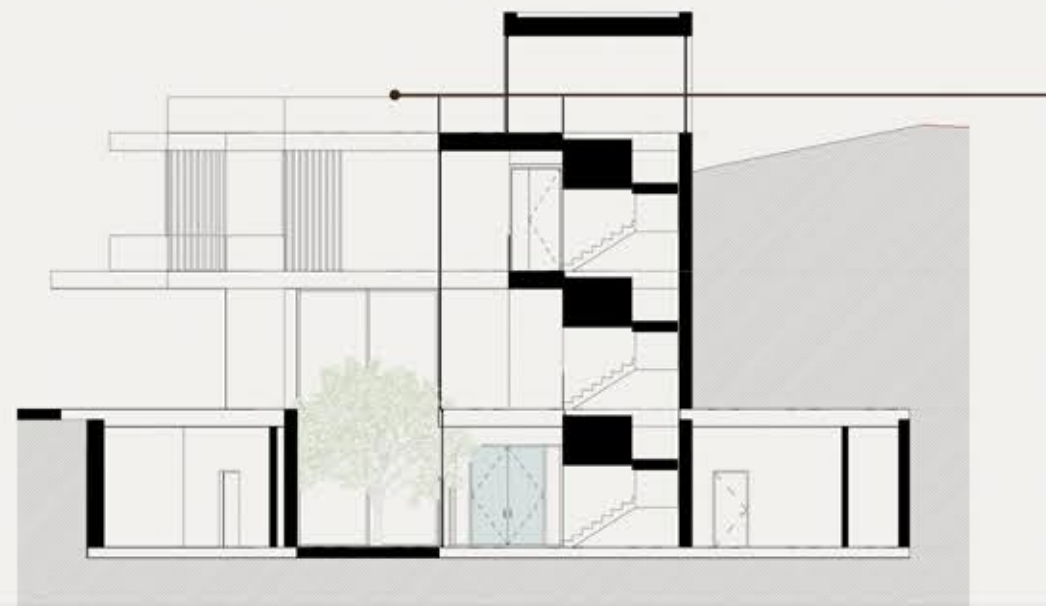


DIAMANTE VILLAS

6 - B E D	SQM 1,254 - 1,450
	SQFT 13,498 - 15,608

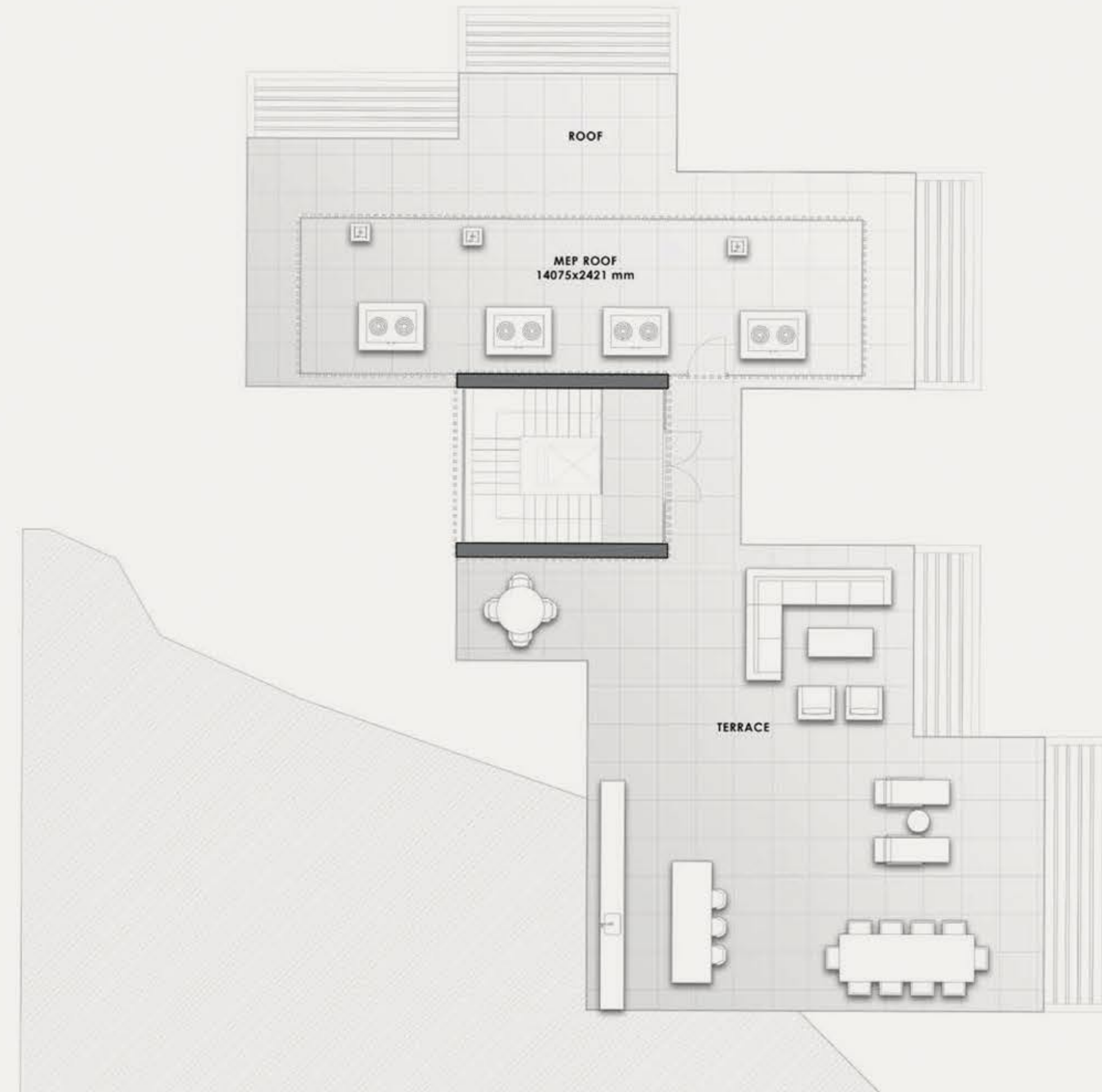
PLOT SIZE	
SQM	2,476 - 2,881
SQFT	26,651 - 31,011

Including total indoor & outdoor built up area.



ROOFTOP
TERRACE

Disclaimer: All pictures, plans, layouts, information, data and details included in this brochure are indicative only and may change at any time up to the final 'as built' status in accordance with final designs of the project, regulatory approvals and planning permissions. All accessories and interior finishes such as wallpaper, chandeliers, furniture, electronics, white goods, curtains, hard and soft landscaping, pavements, features, gym, and other elements displayed in the brochure, or between the plot boundary, are not part of the unit and are shown for illustrative purposes only.





SPECIFICATIONS

All villas come with concrete boundary walls, double glazed windows, cooling and heating system, leveled and graded outdoor spaces, precast concrete pavers on driveway and parking.

Each villa features an exquisite pool and beautifully crafted hardscape.

Note: The villas do not come with any furniture nor softscaping.

FOYER

FLOOR	Local Marble or equivalent
SKIRTING	Local Marble or equivalent
WALLS	Plastered walls with emulsion paint
CEILING	Gypsum ceiling with emulsion paint
ELEVATOR	Passenger elevator

LIVING ROOM / DINING

FLOOR	Local Marble or equivalent
SKIRTING	Local Marble or equivalent
WALLS	Plastered walls with emulsion paint
CEILING	Gypsum ceiling with emulsion paint

BEDROOMS

FLOOR	Porcelain Marble Look or equivalent
SKIRTING	Porcelain Marble Look or equivalent
WALLS	Plastered walls with emulsion paint
CEILING	Gypsum ceiling with emulsion paint
WARDROBE	Joinery with lacquered or laminate finish

KITCHEN

FLOOR	Porcelain Marble Look or equivalent
SKIRTING	Porcelain Marble Look or equivalent
WALLS	Wall panels
CEILING	Gypsum ceiling with emulsion paint
COUNTERTOP	Engineered Stone or equivalent
CABINETS	Joinery with lacquered or laminate finish
APPLIANCES	Built-in appliances (Fridge, Oven, Hob, Hood, and Dishwasher). Brand: Miele or equivalent

BATHROOMS

FLOOR	Porcelain Marble Look or equivalent
WALLS	Porcelain Marble Look or equivalent
CEILING	Moisture resistant gypsum ceiling finished with paint
COUNTERTOP	High quality solid surface or equivalent
JOINERY	Joinery with lacquered / laminate finish
SANITARY FIXTURES	Duravit or equivalent
SANITARYWARE	Duravit, Kohler or equivalent
MIRROR	Included



SPECIFICATIONS

SERVICE KITCHEN

FLOOR	Porcelain tile or equivalent
SKIRTING	Porcelain tile or equivalent
WALLS	Wall panels
CEILING	Gypsum ceiling with emulsion paint
COUNTERTOP	Engineered Stone or equivalent
CABINETS	Joinery with lacquered / laminate finish

BASEMENT HALLWAY

FLOOR	Porcelain Marble Look or equivalent
SKIRTING	Porcelain Marble Look or equivalent
WALLS	Plastered walls with emulsion paint
CEILING	Gypsum ceiling with emulsion paint

Disclaimer: All pictures, plans, layouts, information, data and details included in this brochure are indicative only and may change at any time up to the final 'as built' status in accordance with final designs of the project, regulatory approvals and planning permissions. All accessories and interior finishes such as wallpaper, chandeliers, furniture, electronics, white goods, curtains, hard and soft landscaping, pavements, features, gym, and other elements displayed in the brochure, or between the plot boundary, are not part of the unit and are shown for illustrative purposes only.

SPA ROOM

Mechanical, electrical and plumbing provisions will be provided.

COUNTERTOP	High Quality Solid Surface or equivalent
JOINERY	Joinery with lacquered / laminate finish
SANITARY FIXTURES	Duravit or equivalent
SANITARYWARE	Duravit, Kohler or equivalent
MIRROR	Included

** Lockers, bench and furniture not included*

SAUNA & STEAM

Mechanical, electrical and plumbing provisions will be provided.

HOME THEATRE

FLOOR	Porcelain tile or equivalent
SKIRTING	Porcelain tile or equivalent
WALLS	Plastered walls with emulsion paint
CEILING	Gypsum ceiling with emulsion paint

** Carpet, furniture and electronics not included*

MULTIPURPOSE ROOM/GYM

FLOOR	Porcelain Marble Look or equivalent
SKIRTING	Porcelain tile or equivalent
WALLS	Plastered walls with emulsion paint
CEILING	Gypsum ceiling with emulsion paint

** Gym equipment not included*

MAIDS, STORAGE & LAUNDRY

FLOOR	Porcelain tile or equivalent
SKIRTING	Porcelain tile or equivalent
WALLS	Plastered walls with emulsion paint
CEILING	Gypsum ceiling with emulsion paint

MAIDS BATHROOMS

FLOOR	Porcelain tile or equivalent
WALLS	Porcelain tile or equivalent
CEILING	Moisture resistant gypsum ceiling finished with paint
COUNTERTOP	Solid Surface or equivalent
SANITARY FIXTURES	Duravit or equivalent
SANITARYWARE	Duravit, Kohler or equivalent
MIRROR	Included

T/ERRA V/VA

DARGLOBAL



AN EXCLUSIVE COMMUNITY WITH 24/7 PREMIUM SECURITY

Located within the gated community of Los Jaralillos - Benahavís, Tierra Viva prides itself on providing a private and secure environment for its residents with premium 24/7 security services.



T/ERRA V/VA

DARGLOBAL



PERSONAL PARADISE

Each villa within Tierra Viva comes with its own private pool, offering a chance to create a personal oasis for serene moments and unforgettable memories.



T/ERRA V/VA

