

The KOS

by TOP GESTIÓN

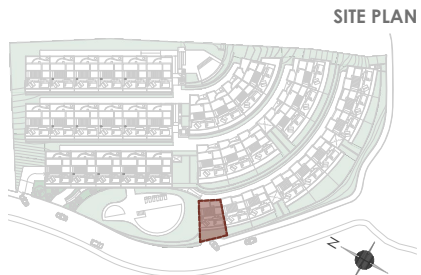
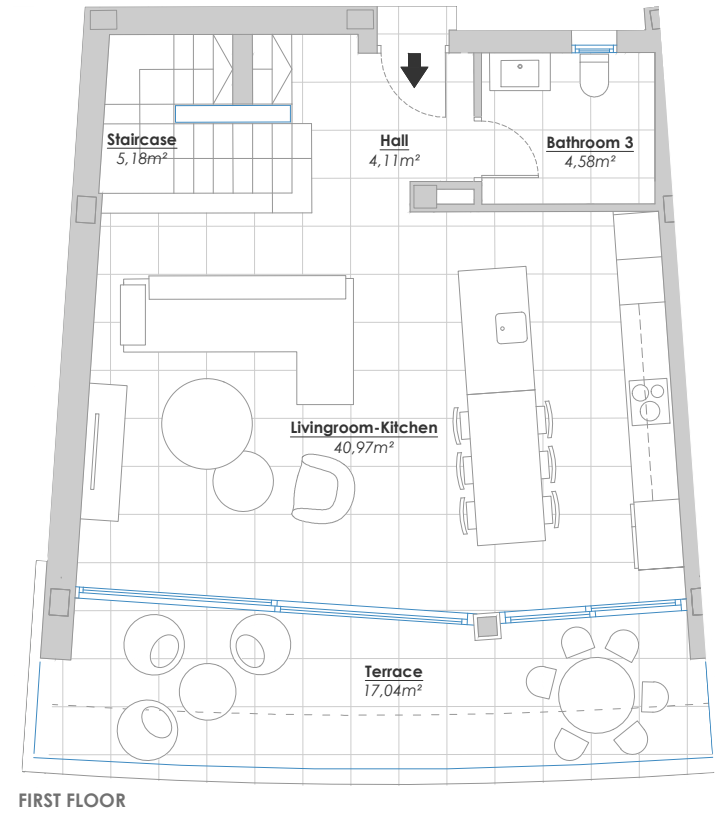
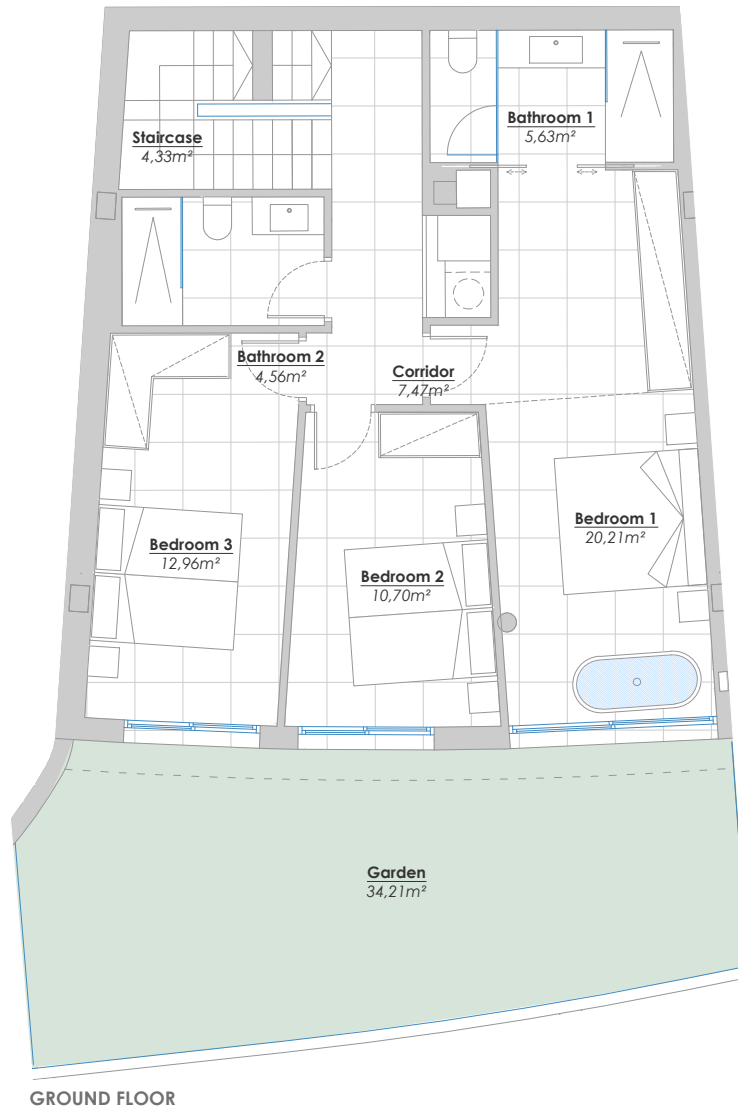
SKY TOP VILLA 1.1

USEABLE SURFACE AREA

Indoors	138,79 m ²
Terraces	76,18 m ²
Garden	34,21 m ²

TOTAL NET FLOOR AREA: 152,67 m²
ACCORDING TO ROYAL DECREE 218/2005

TOTAL BUILT ENCLOSED AREA: 174,93 m²



(*) This plan may be modified depending on progress of the development. The furniture shown is purely for decorative purposes. The project manager reserves the right to make the necessary changes for any possible functional, aesthetic and legal reasons, without this negatively affecting the quality of the construction. Illustrative dimensions.

The KOS

by TOP GESTIÓN

SKY TOP VILLA 1.1

USEABLE SURFACE AREA

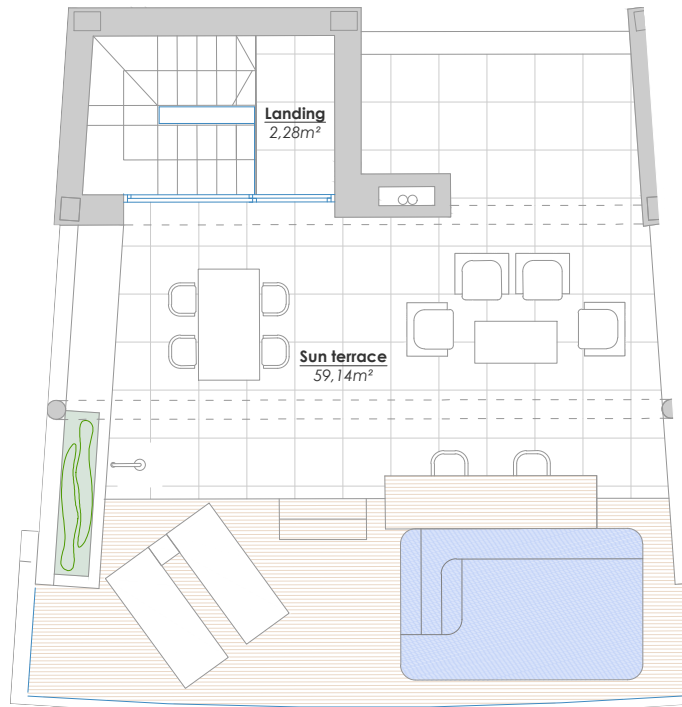
Indoors 138,79 m²

Terraces 76,18 m²

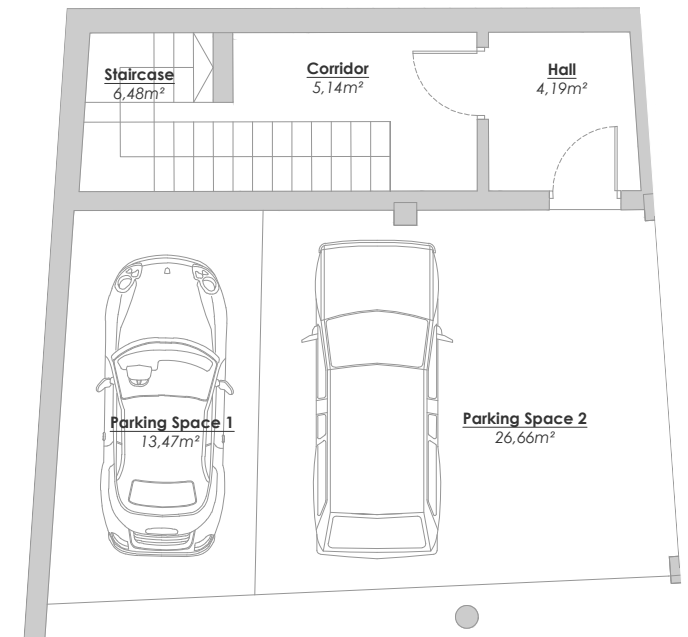
Garden 34,21 m²

TOTAL NET FLOOR AREA: 152,67 m²
ACCORDING TO ROYAL DECREE 218/2005

TOTAL BUILT ENCLOSED AREA: 174,93 m²

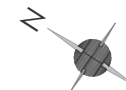
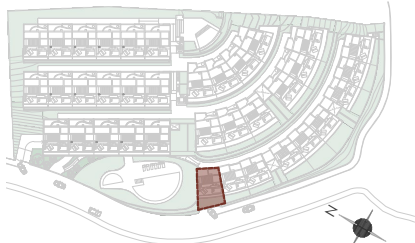


SUN TERRACE FLOOR



BASEMENT FLOOR

SITE PLAN



Graphic scale

(*) This plan may be modified depending on progress of the development. The furniture shown is purely for decorative purposes. The project manager reserves the right to make the necessary changes for any possible functional, aesthetic and legal reasons, without this negatively affecting the quality of the construction. Illustrative dimensions.