

Total built area:	615,50 m ²
Porch:	33,30 m ²
Plot:	1.119,00 m ²
Bedrooms:	5
Bathrooms:	5
Guest toilet:	3
Views:	Sea & mountain
Terraces:	369,10 m ²
Garage:	91,95 m ²

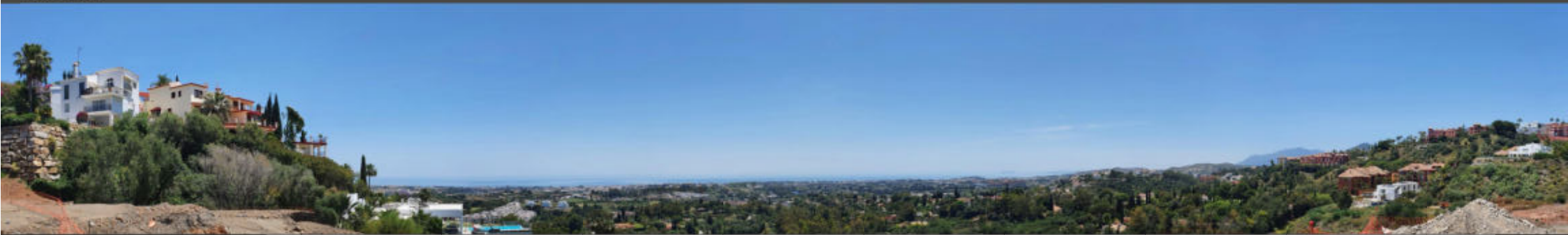


SPANISH CORNER

Villa 16

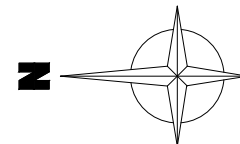


Views

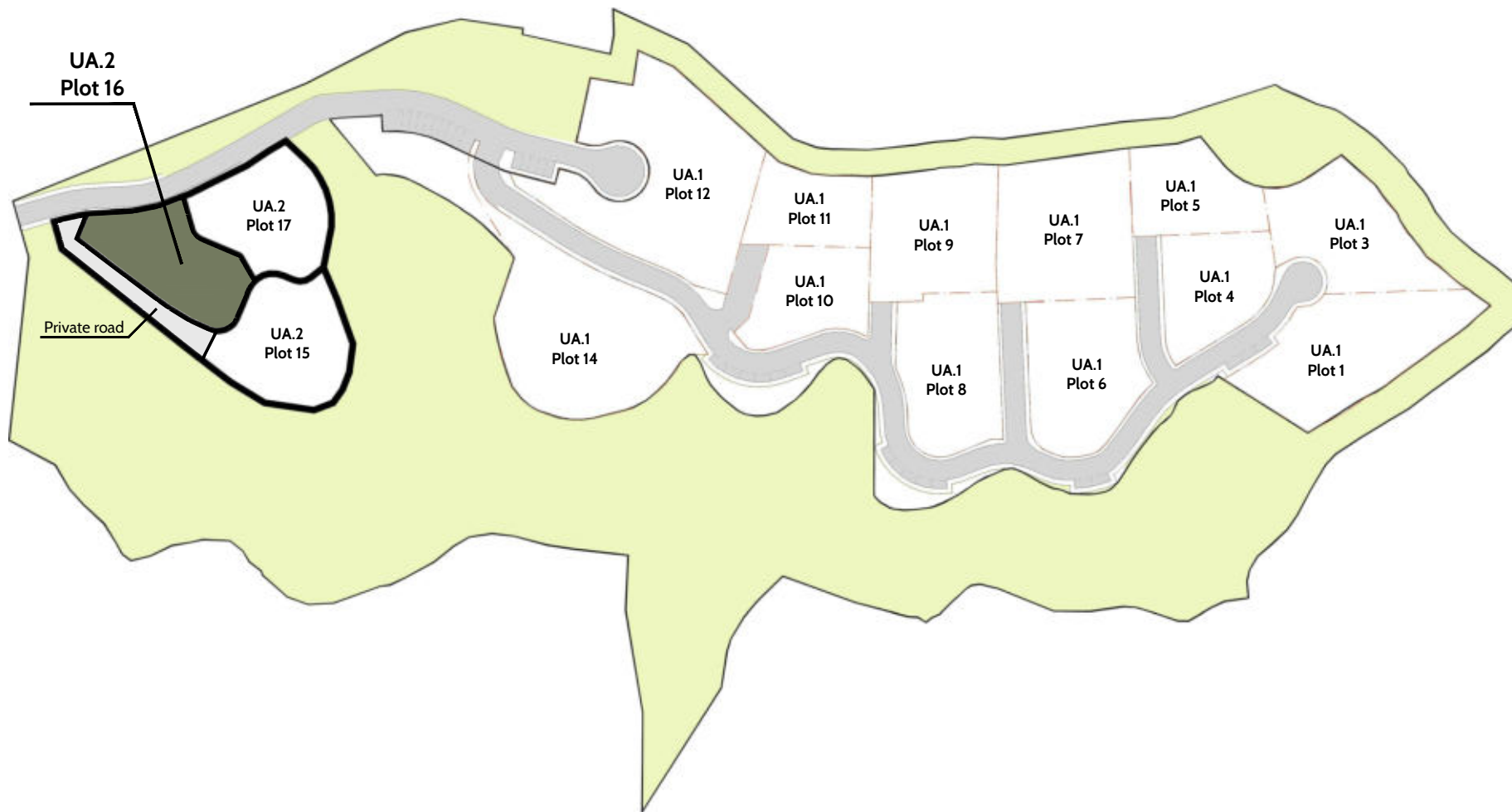


SPANISH CORNER

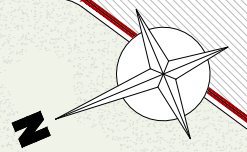
Villa 16



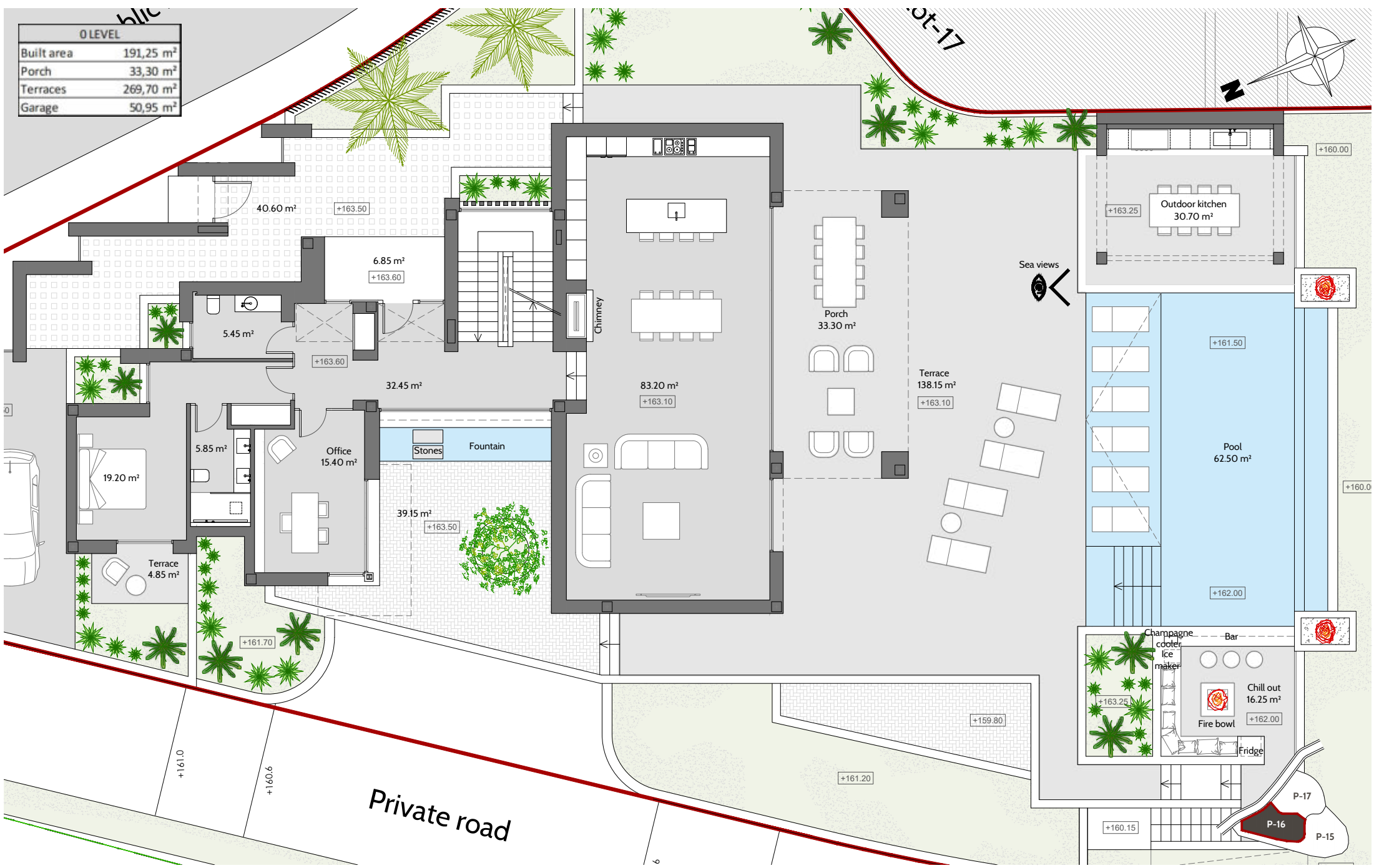
PLOT Nº	PLOT AREA (m ²)
16	1.119



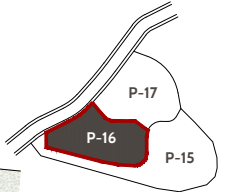
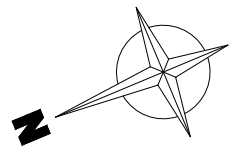
-1 LEVEL	
Built area	280,45 m ²
Porch	0,00 m ²
Terraces	26,90 m ²
Garage	41,00 m ²



0 LEVEL	
Built area	191,25 m ²
Porch	33,30 m ²
Terraces	269,70 m ²
Garage	50,95 m ²



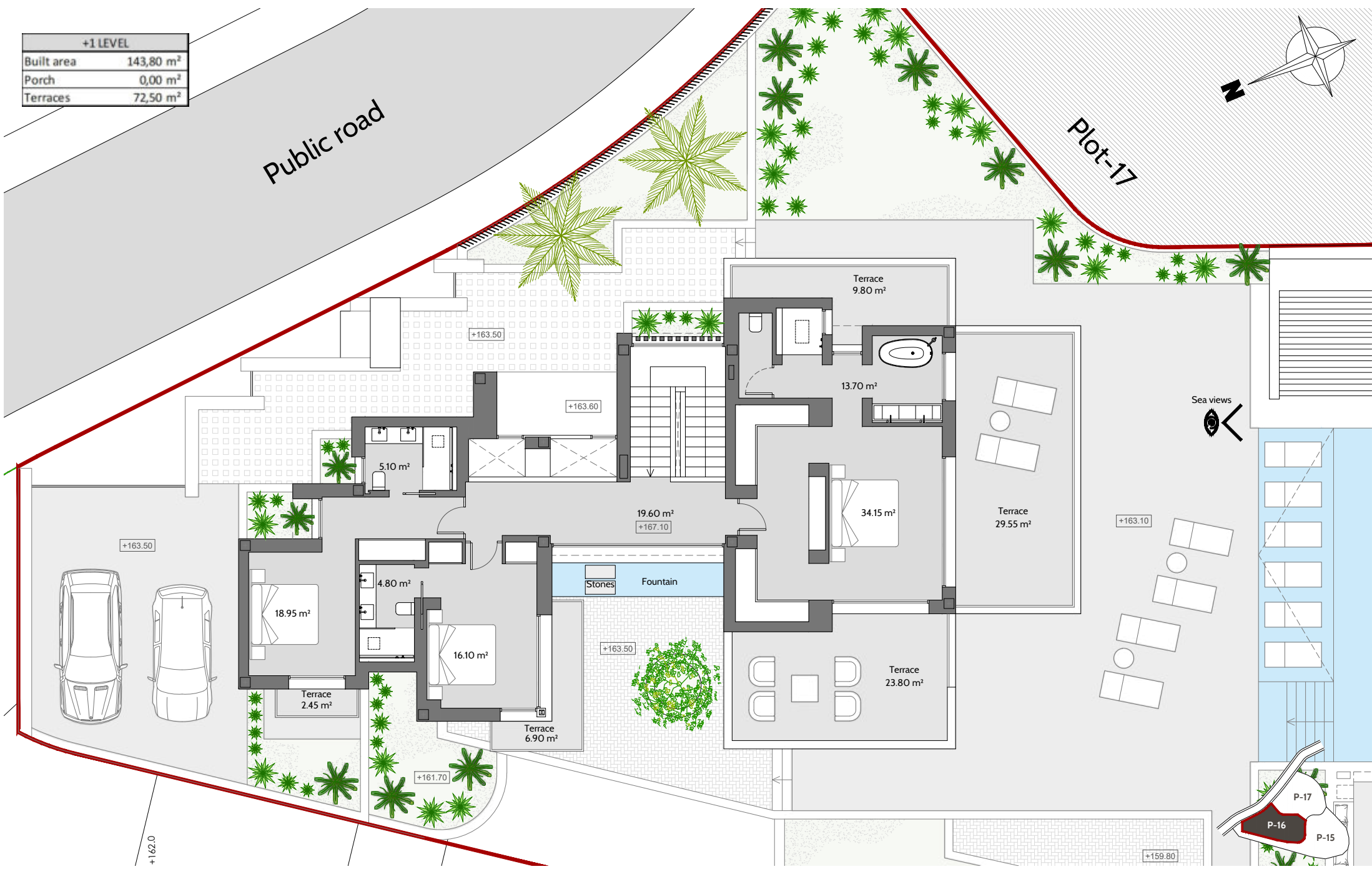
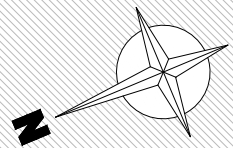
Total built area:	615,50 m ²
Porch:	33,30 m ²
Plot:	1.119,00 m ²
Bedrooms:	5
Bathrooms:	5
Guest toilet:	3
Views:	Sea & mountain
Terraces:	369,10 m ²
Garage:	91,95 m ²



+1 LEVEL	
Built area	143,80 m ²
Porch	0,00 m ²
Terraces	72,50 m ²

Public road

Plot-17





SPANISH CORNER

Villa 16



SPANISH CORNER

Villa 16



SPANISH CORNER

Villa 16



SPANISH CORNER

Villa 16



SPANISH CORNER

Villa 16



SPANISH CORNER

Villa 16



SPANISH CORNER

Villa 16