

DON GONZALO 3

MARBELLA



SPECTACULAR MODERN MARBELLA IN THE HEART OF MARBELLA

Welcome to Don Gonzalo 3, an exquisite residence that an unparalleled living experience with its breathtaking views of the communal garden from a generous covered terrace. Don Gonzalo 3 also benefits from a communal gym equipped with Technogym equipment.

Beds: 3 | Baths: 3 | Built: 209m² | Terraces & Porches: 23m² | Parking: 1 car | Orientation: W



Step inside to discover unique and contemporary interiors adorned with flattering LED lighting that bathes the living space in a warm and inviting atmosphere. The open-plan living and dining area maximises the use of space, complemented by a stunning selection of stylish and functional furniture and furnishings.

Attention to detail is evident throughout the property, but especially in the living area. A stunning integrated shelving unit with LED lighting adds character to the space, while tall floor to ceiling glass sliding doors bathe the apartment with plenty of natural light. The neutral colour palette evokes a sense of calmness and luxury, elevating the interiors to become the ideal place to unwind and relax.





The separated kitchen boasts lovely wooden cabinets, providing ample storage space, and features state-of-the-art appliances, including an intimate dining nook with picturesque views.





The covered terrace provides the perfect setting for alfresco dining and a chic chill-out area, as well as sweeping views of the lovely communal garden. The apartment's seamless design allows for direct access to the terrace from across the unit, creating a harmonious flow between indoor and outdoor living.





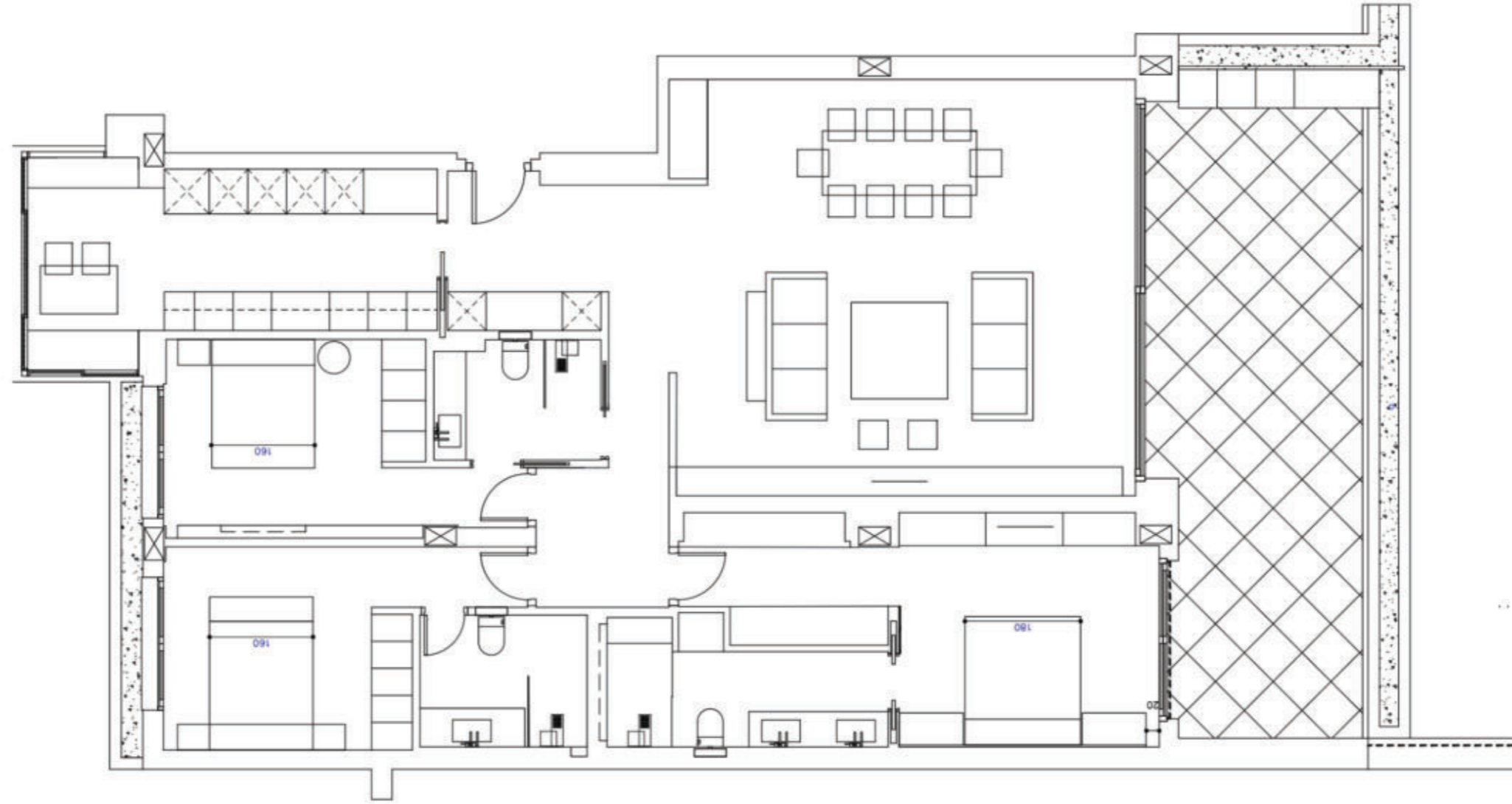


Don Gonzalo 3 offers not only a luxurious living space but also two incredible guest bedrooms, each tastefully decorated, and an impressive master bedroom. The master bedroom delights with direct terrace access, ample closet space, and a private bathroom featuring a double vanity and a spacious stand-in shower.









Beds: 3 | Baths: 3 | Built: 209m² | Terraces & Porches: 23m² | Parking: 1 car | Orientation: W



DON GONZALO 3

MARBELLA