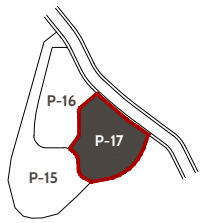
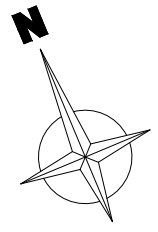


Total built area:	968,45 m ²
Porch:	18,40 m ²
Plot:	1.207,00 m ²
Bedrooms:	5
Bathrooms:	5
Guest toilet:	3
Views:	Sea & mountain
Terraces:	183,40 m ²
Pergola:	20,65 m ²
Garage:	50,85 m ²

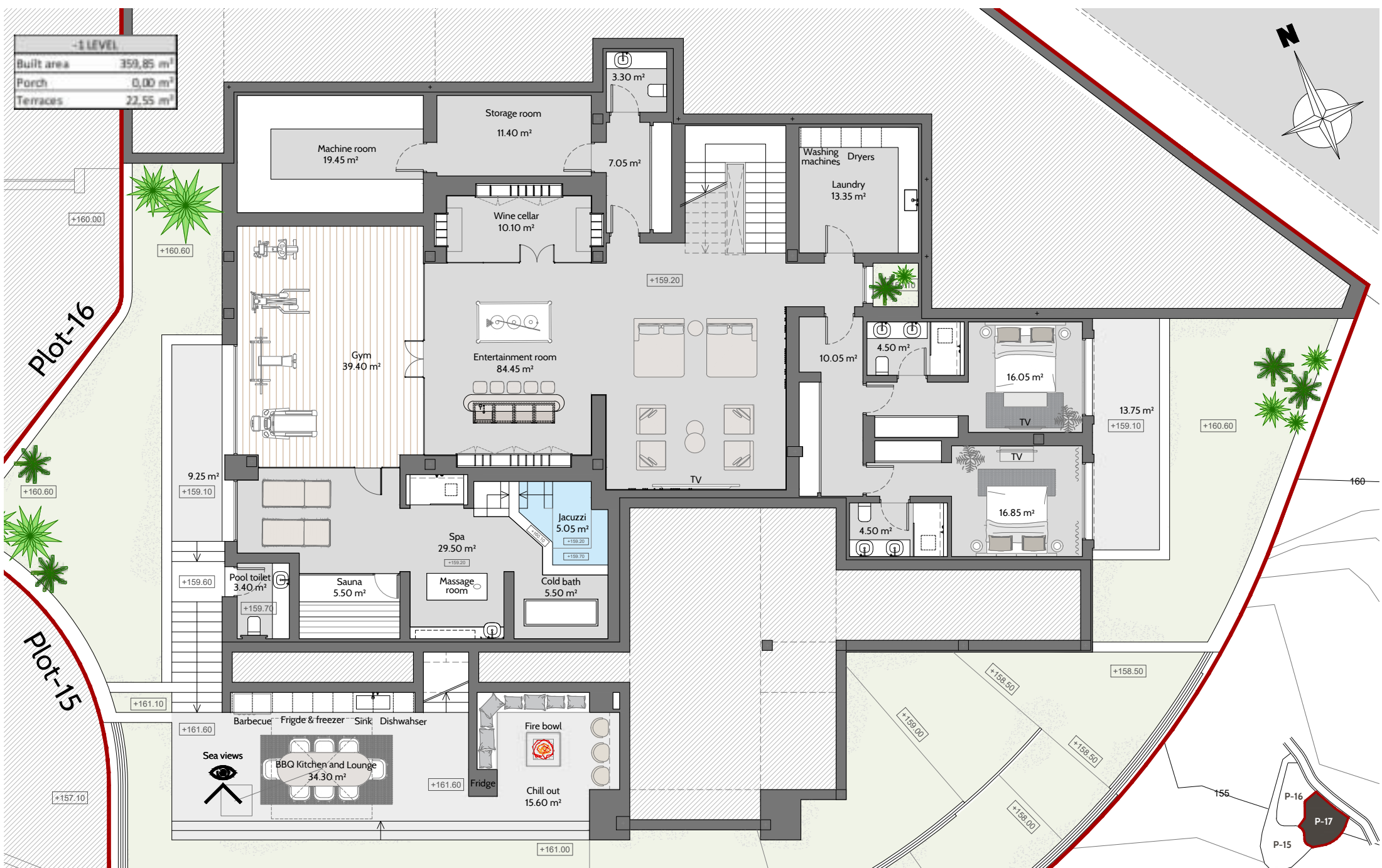
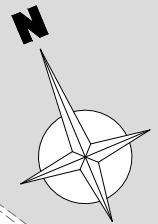


SPANISH CORNER

Villa 17

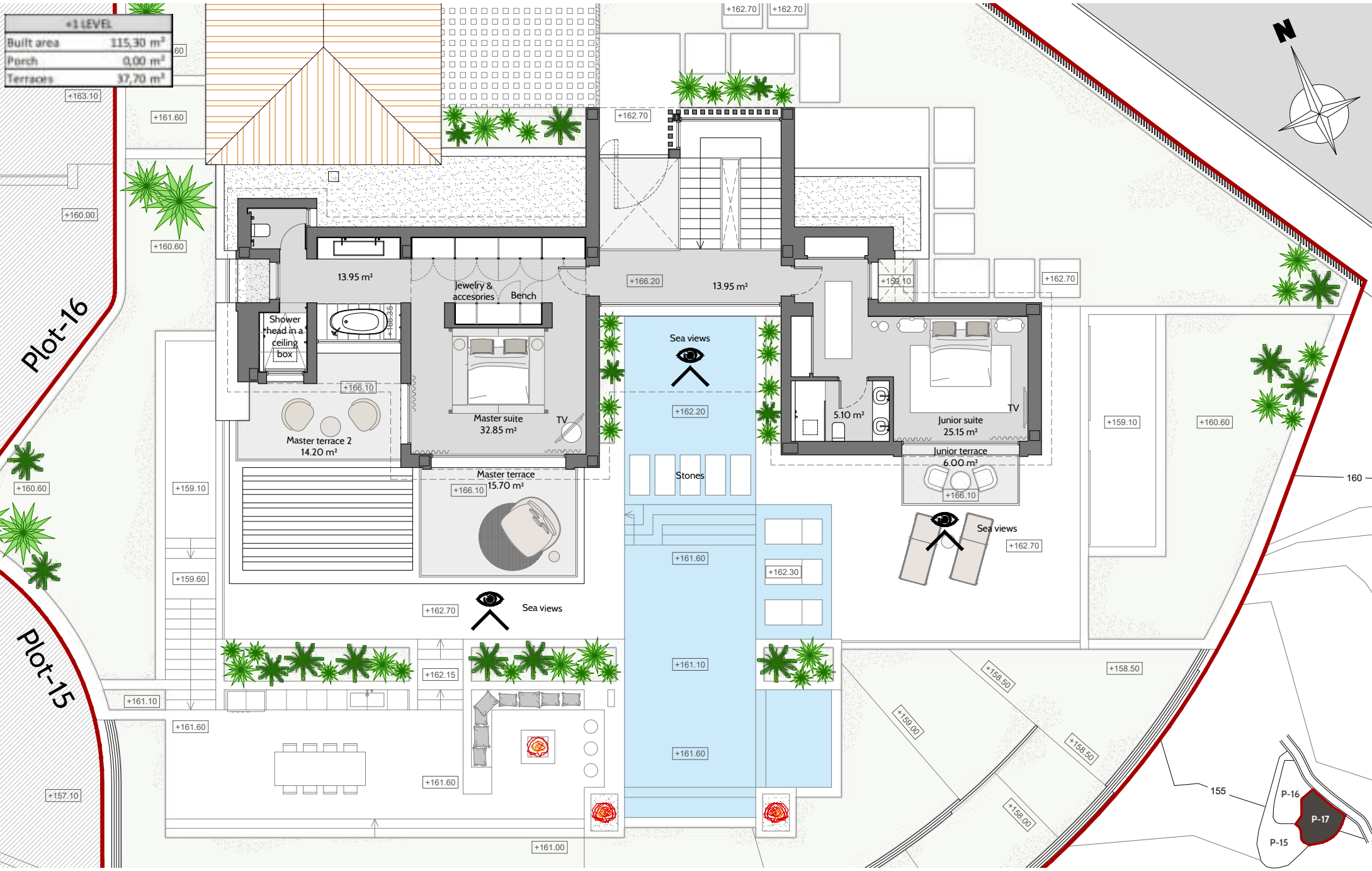
PLOT
SCALE: 1/200

-1 LEVEL	
Built area	359,85 m ²
Porch	0,00 m ²
Terraces	22,55 m ²



0 LEVEL	
Built area	193.30 m ²
Porch	18.40 m ²
Terraces	123.15 m ²
Pergola	20.65 m ²
Garage	50.85 m ²





+1 LEVEL	
Built area	115,30 m ²
Porch	0,00 m ²
Terraces	37,70 m ²