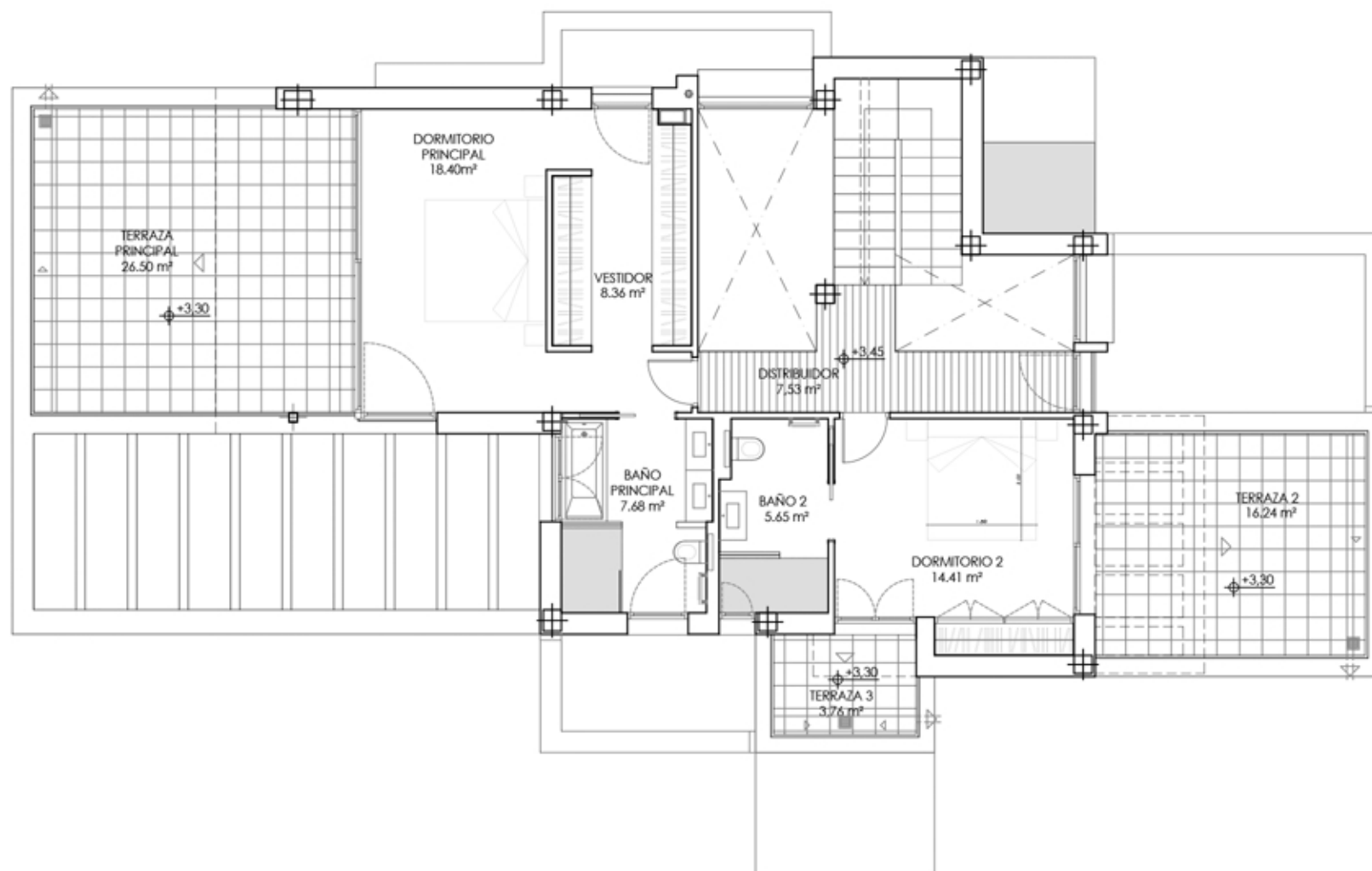
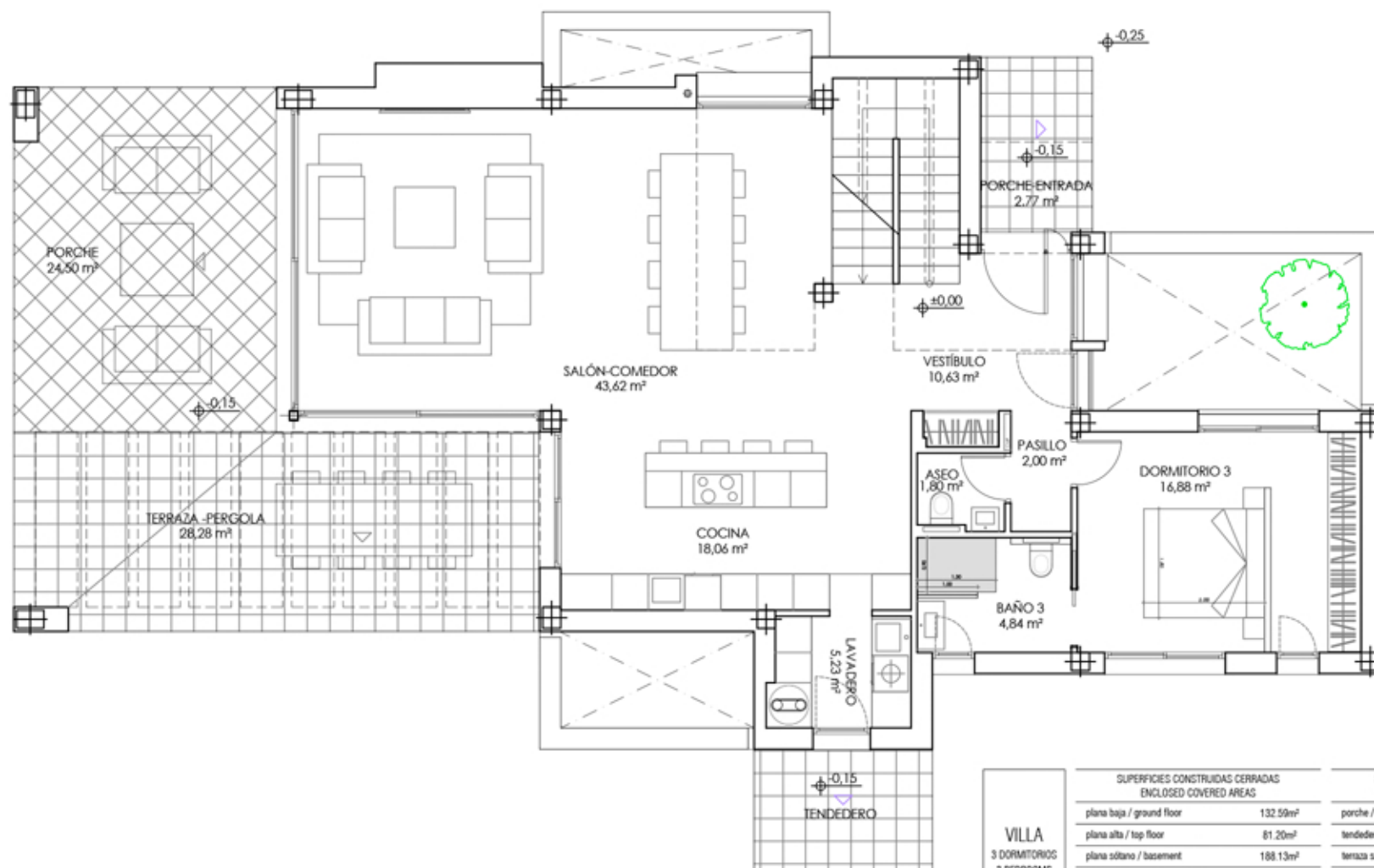


VIVIENDA TIPO A - PLANTA SÓTANO AMUEBLADA
VILLAS 2, 3 & 4



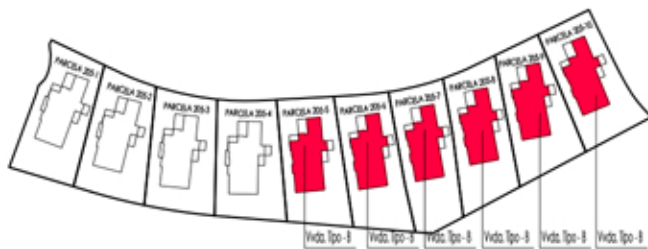
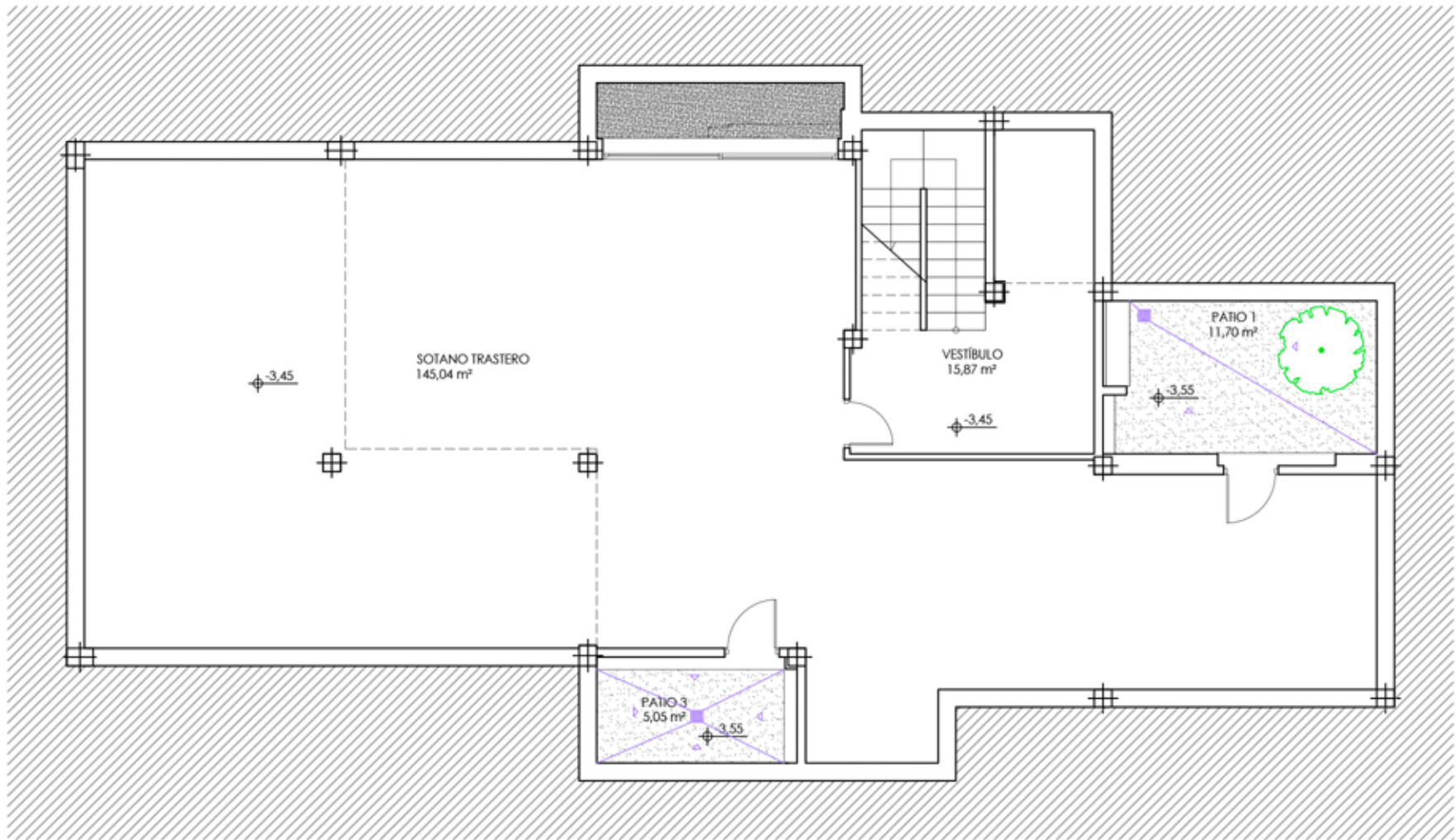
VIVIENDA TIPO A - PLANTA ALTA AMUEBLADA

VILLAS 2, 3 & 4

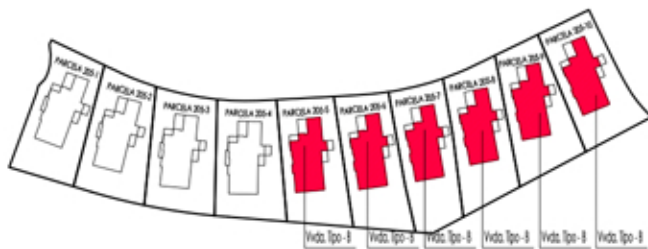
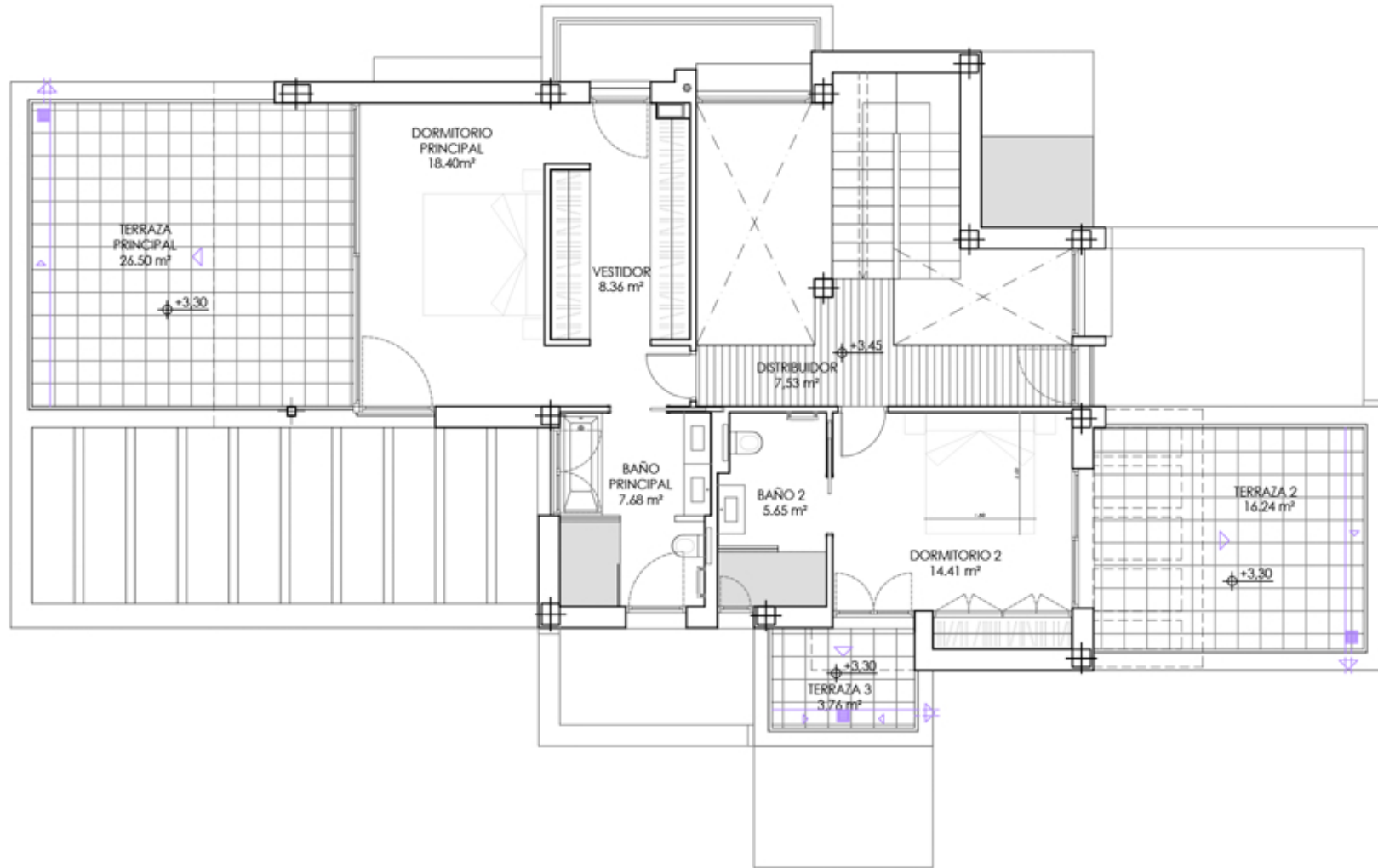


VILLA 3 DORMITORIOS 3 BEDROOMS	SUPERFICIES CONSTRUIDAS CERRADAS ENCLOSED COVERED AREAS		SUPERFICIES CONSTRUIDAS ABIERTAS UNCLOSED COVERED AREAS	
		plana baja / ground floor	132,59m ²	porche / porch
	plana alta / top floor	81,20m ²	tendedero / drying place	5,90m ²
	plana sótano / basement	188,13m ²	terrace salón / living room terrace	52,78m ²
			terrace dorm. ppal. / main room terrace	26,50m ²
			terrace dorm. II / room II terraces	20,00m ²
			patios sótano / basement patios	20,59m ²
	total sup. sobre rasante / total area over ground level	226,04m ²		107,95m ²
superficie de parcela plot area 756,50m ²	total sup. bajo rasante / total area under ground level	188,13m ²		20,59m ²
	según decreto 218/2005	226,04m ² (1)		12,25m ² (2)

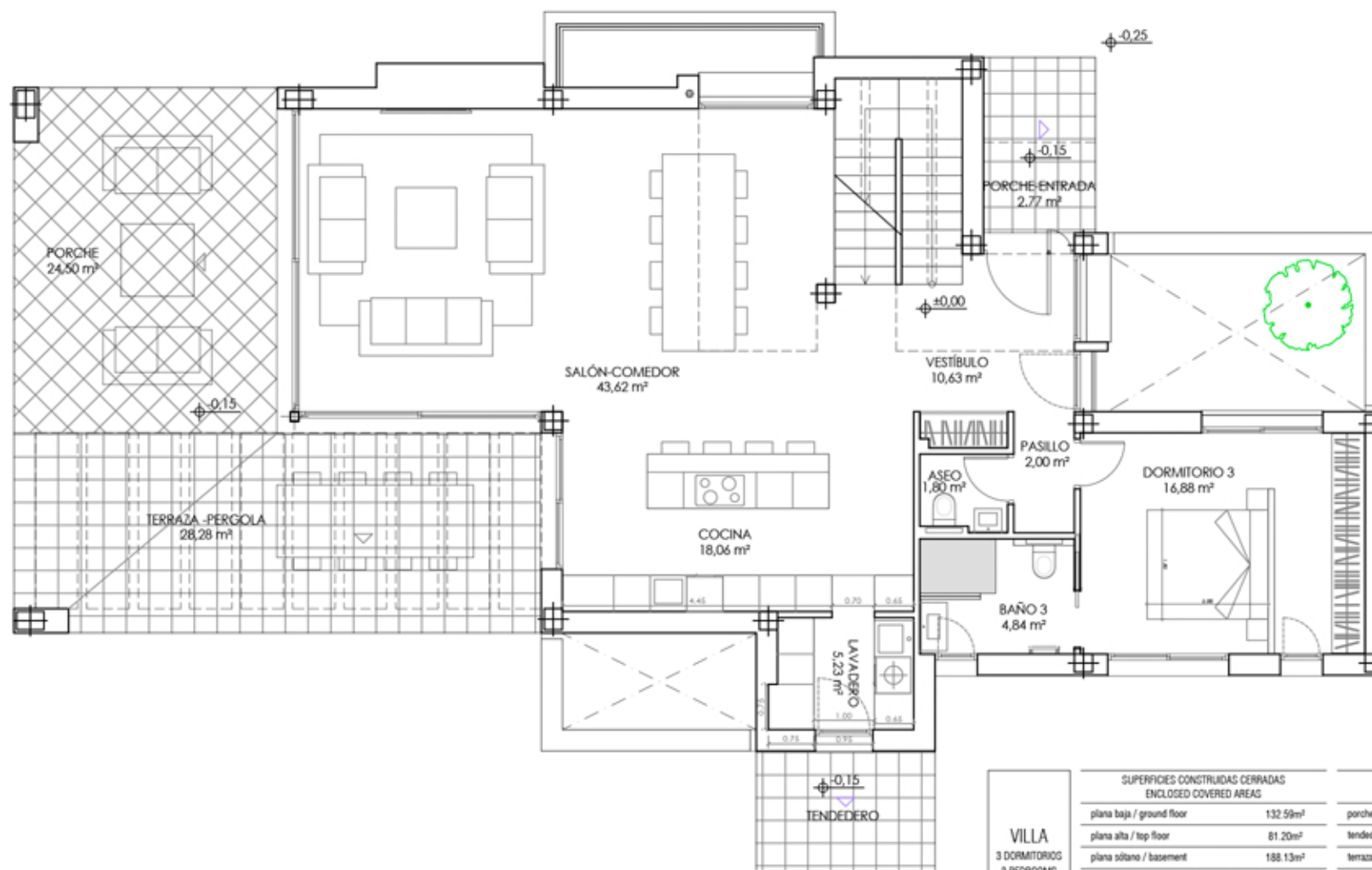




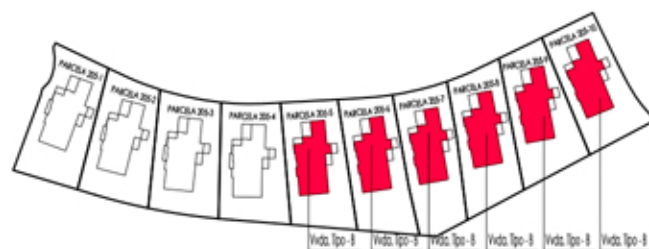
VIVIENDA TIPO B - PLANTA SÓTANO AMUEBLADA
VILLAS 5, 6, 7, 8, 9 & 10

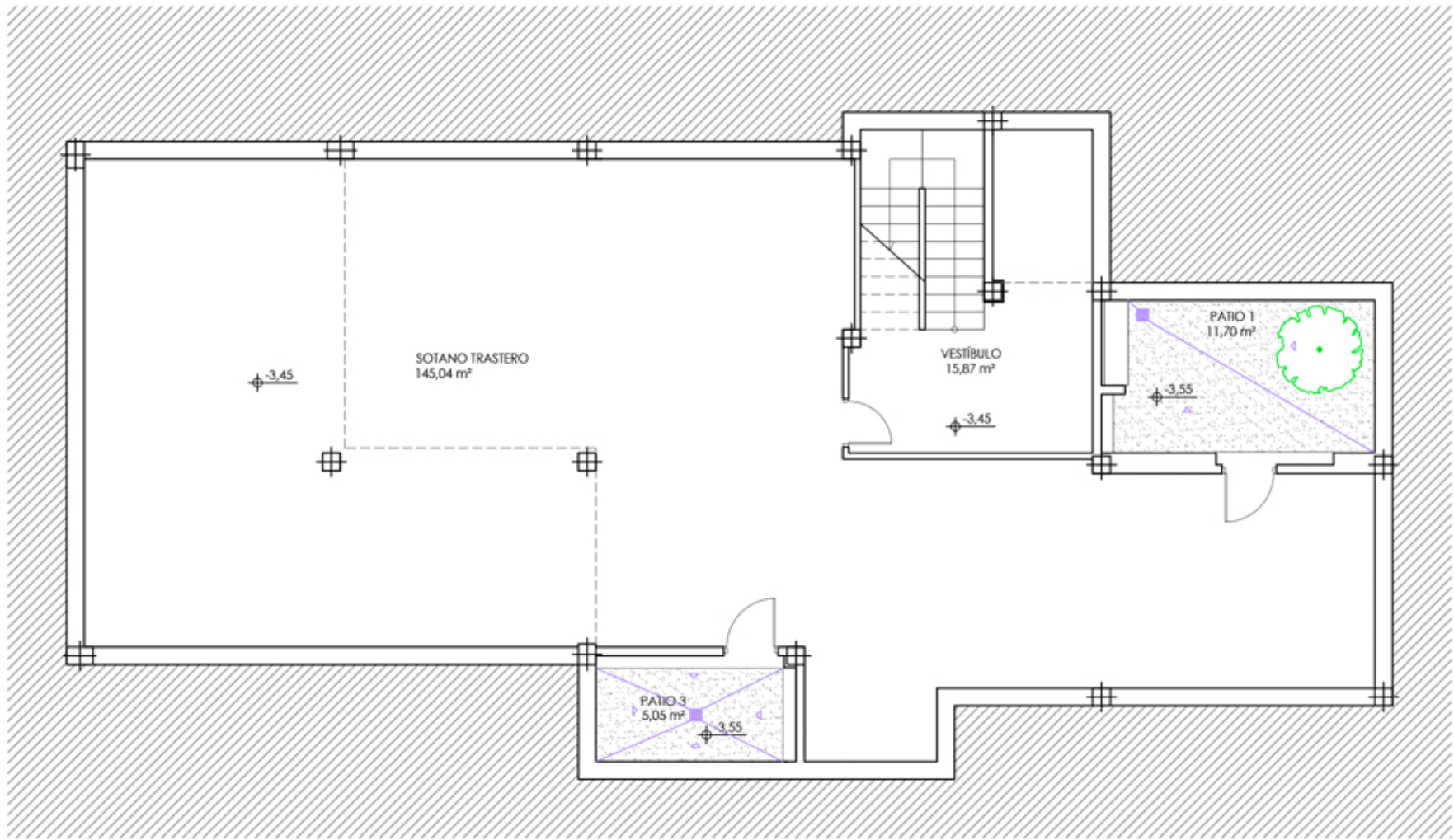


VIVIENDA TIPO B - PLANTA ALTA AMUEBLADA
VILLAS 5, 6, 7, 8, 9 & 10

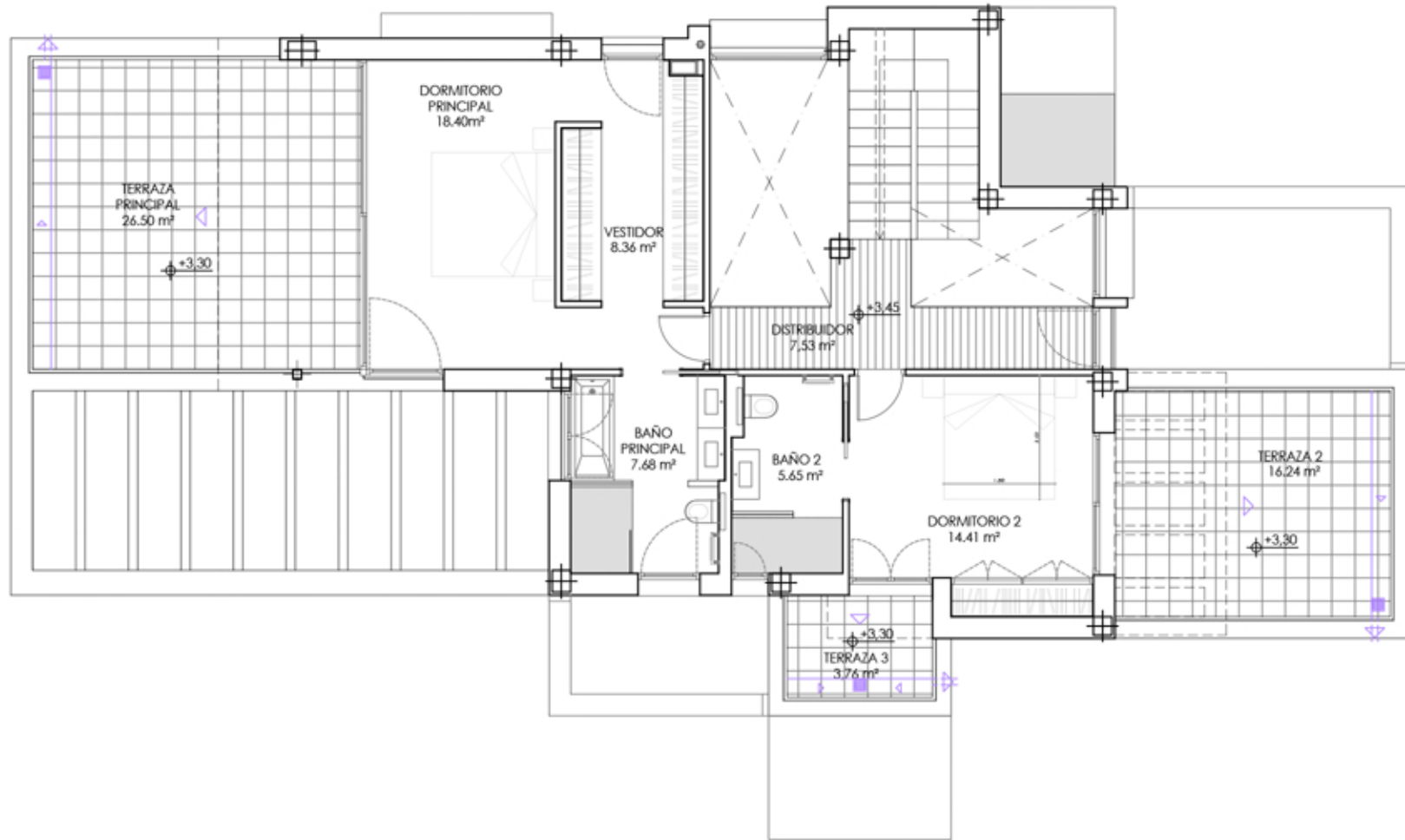


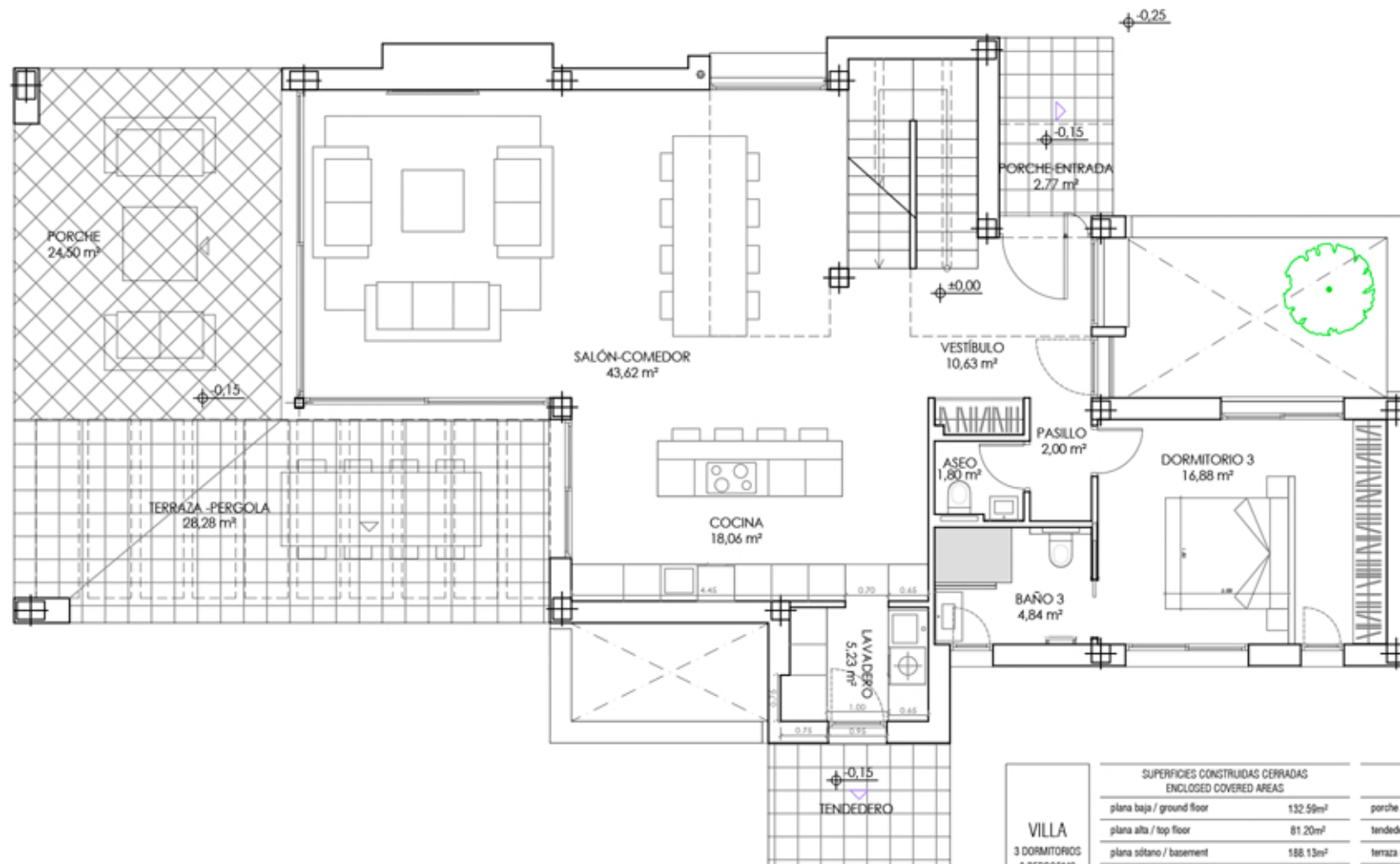
VILLA 3 DORMITORIOS 3 BEDROOMS	SUPERFICIES CONSTRUIDAS CERRADAS ENCLOSED COVERED AREAS		SUPERFICIES CONSTRUIDAS ABIERTAS UNCLOSED COVERED AREAS	
		plana baja / ground floor	132.59m ²	porche / porch
	plana alta / top floor	81.20m ²	tendedero / drying place	5.90m ²
	plana sótano / basement	188.13m ²	terrace salón / living room terrace	52.78m ²
			terrace dorm. ppal. / main room terrace	26.50m ²
			terrazas dorm. II / room II terraces	20.00m ²
			patios sótano / basement patios	16.75m ²
	total sup. sobre rasante / total area over ground level	226.04m ²		107.95m ²
superficie de parcela plot area 756.50m ²	total sup. bajo rasante / total area under ground level	188.13m ²		16.75m ²
	según decreto 218/2005	226.04m ² (1)		12.25m ² (2)





VIVIENDA TIPO C - PLANTA SÓTANO AMUEBLADA
VILLA 1





VILLA 3 DORMITORIOS 3 BEDROOMS	SUPERFICIES CONSTRUIDAS CERRADAS ENCLOSED COVERED AREAS		SUPERFICIES CONSTRUIDAS ABIERTAS UNCLOSED COVERED AREAS	
	plana baja / ground floor	132,59m ²	porche / porch	2,77m ²
plana alta / top floor	81,20m ²	tendedero / drying place	5,90m ²	
plana sótano / basement	188,13m ²	terrazza salón / living room terrace	52,78m ²	
		terrazza dorm. ppal. / main room terrace	26,50m ²	
		terrazas dorm. II / room II terraces	20,00m ²	
		patios sótano / basement patios	16,75m ²	
superficie de parcela 756,50m ²	total sup. sobre rasante / total area over ground level	226,04m ²	107,95m ²	
	total sup. bajo rasante / total area under ground level	188,13m ²	16,75m ²	
	según decreto 218/2005	226,04m ² (*)	12,25m ² (*)	

