

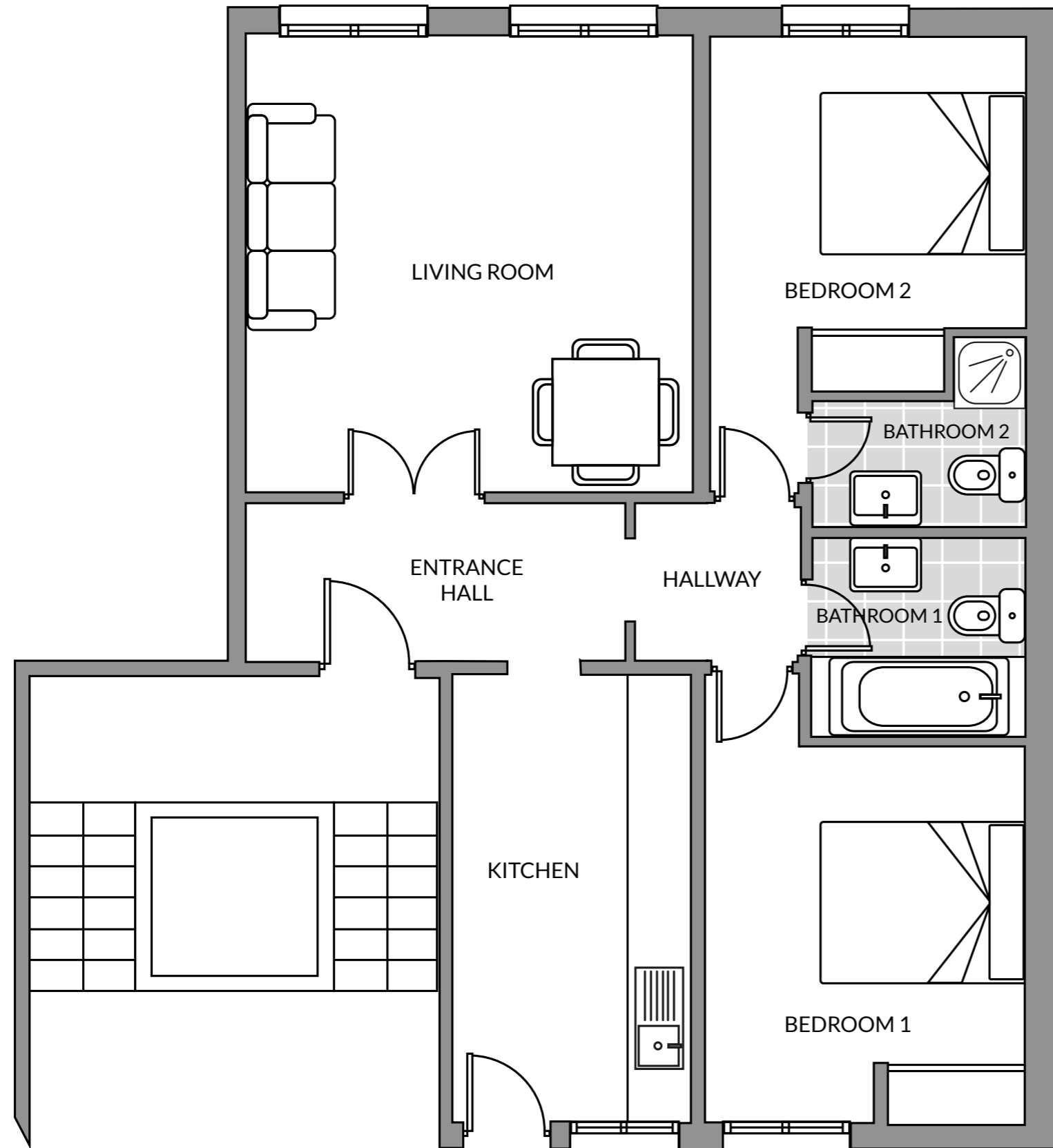
RAMADA®

HOTEL & SUITES BY WYNDHAM
COSTA DEL SOL

Marina Dorada - TYPE A

Bedroom 1	13.41 m ²
Bedroom 2	11.48 m ²
Bedroom 3	8.64 m ²
Kitchen	6.65 m ²
Laundry	3.05 m ²
Bathroom 1	4.54 m ²
Bathroom 2	4.20 m ²
Living room	26.11 m ²
Hallway	5.34 m ²
Entrance hall	4.85 m ²
Constructed area	88.27 m²

The present plan, building specifications and infographics are merely indicative, and are not contractual in nature in terms of colours, textures, vegetation, height of fencing and furniture, opening/rotation of openings, location of installations or sanitary fittings. Likewise, in the stairs leading down to the cellar or basement, if any, and the exit to patios and/or gardens, the number of steps and the level of the plots are for guidance purposes only. To this effect, IDILIQ GROUP reserves the right to introduce those modifications that are motivated by technical, constructive, legal, juridical or supply reasons that are indicated by the Project Management as being necessary or convenient for the correct completion of the building and/or that are ordered by the competent public bodies.



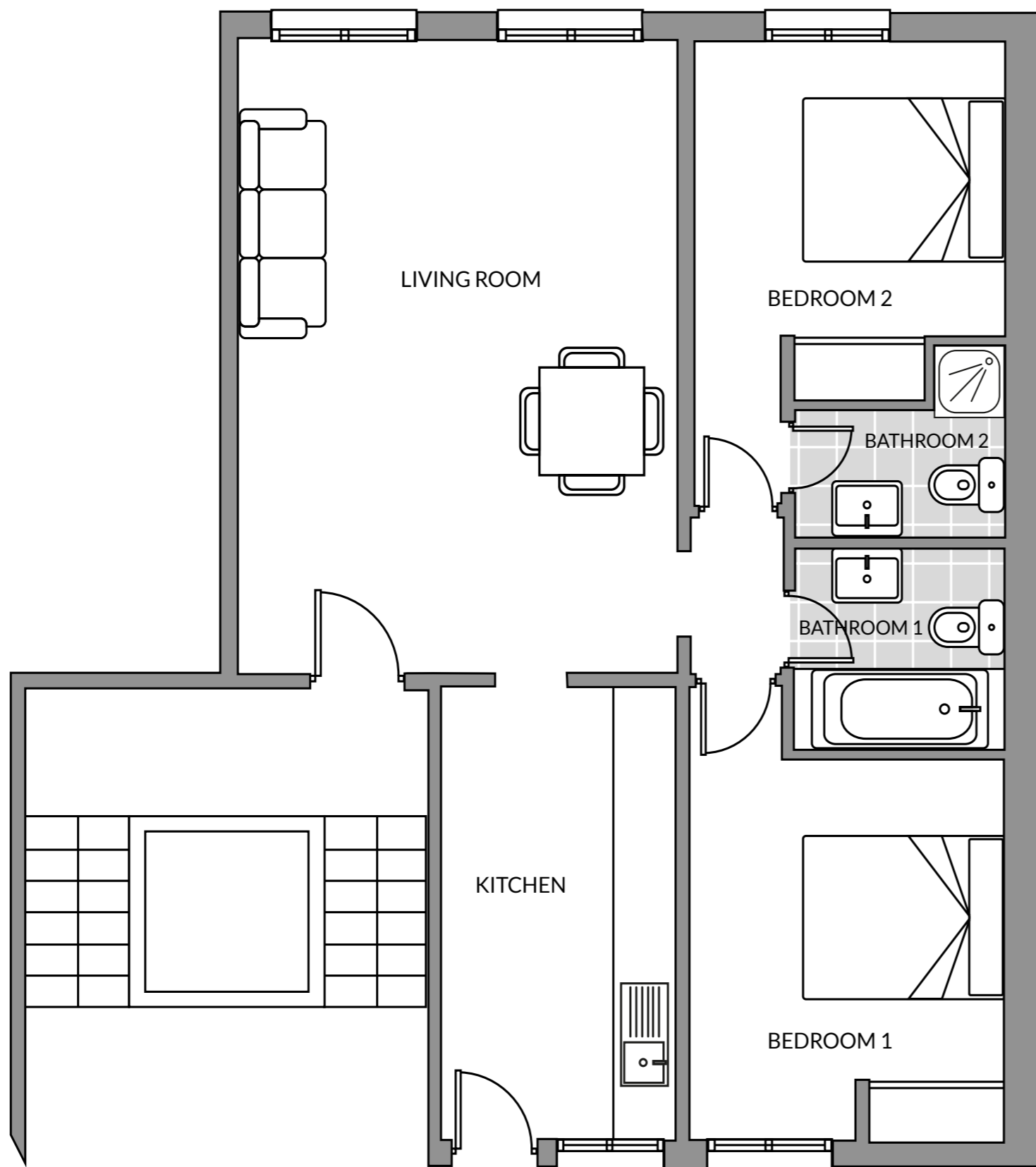
RAMADA®

HOTEL & SUITES BY WYNDHAM
COSTA DEL SOL

Marina Dorada - TYPE B

Bedroom 1	11.55 m ²
Bedroom 2	10.73 m ²
Kitchen	9.67 m ²
Bathroom 1	3.90 m ²
Bathroom 2	2.88 m ²
Entrance hall	5.33 m ²
Hallway	2.40 m ²
Living room	18.70 m ²
Constructed area	65.16 m²

The present plan, building specifications and infographics are merely indicative, and are not contractual in nature in terms of colours, textures, vegetation, height of fencing and furniture, opening/rotation of openings, location of installations or sanitary fittings. Likewise, in the stairs leading down to the cellar or basement, if any, and the exit to patios and/or gardens, the number of steps and the level of the plots are for guidance purposes only. To this effect, IDILIQ GROUP reserves the right to introduce those modifications that are motivated by technical, constructive, legal, juridical or supply reasons that are indicated by the Project Management as being necessary or convenient for the correct completion of the building and/or that are ordered by the competent public bodies.



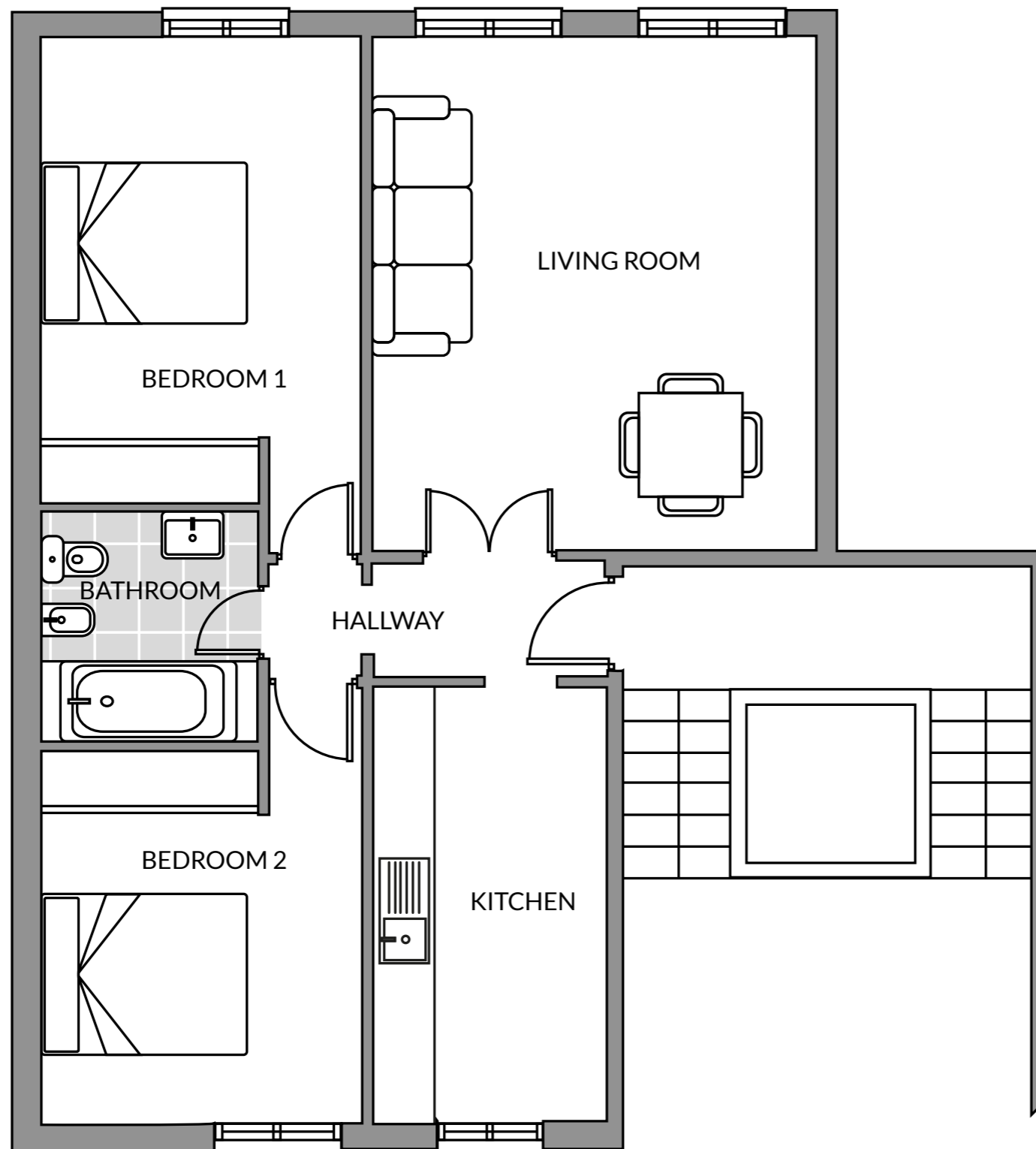
RAMADA®

HOTEL & SUITES BY WYNDHAM
COSTA DEL SOL

Marina Dorada - TYPE C

Bedroom 1	11.55 m ²
Bedroom 2	10.73 m ²
Kitchen	9.67 m ²
Bathroom 1	3.90 m ²
Bathroom 2	2.88 m ²
Living room	25.50 m ²
Constructed area	64.23 m²

The present plan, building specifications and infographics are merely indicative, and are not contractual in nature in terms of colours, textures, vegetation, height of fencing and furniture, opening/rotation of openings, location of installations or sanitary fittings. Likewise, in the stairs leading down to the cellar or basement, if any, and the exit to patios and/or gardens, the number of steps and the level of the plots are for guidance purposes only. To this effect, IDILIQ GROUP reserves the right to introduce those modifications that are motivated by technical, constructive, legal, juridical or supply reasons that are indicated by the Project Management as being necessary or convenient for the correct completion of the building and/or that are ordered by the competent public bodies.



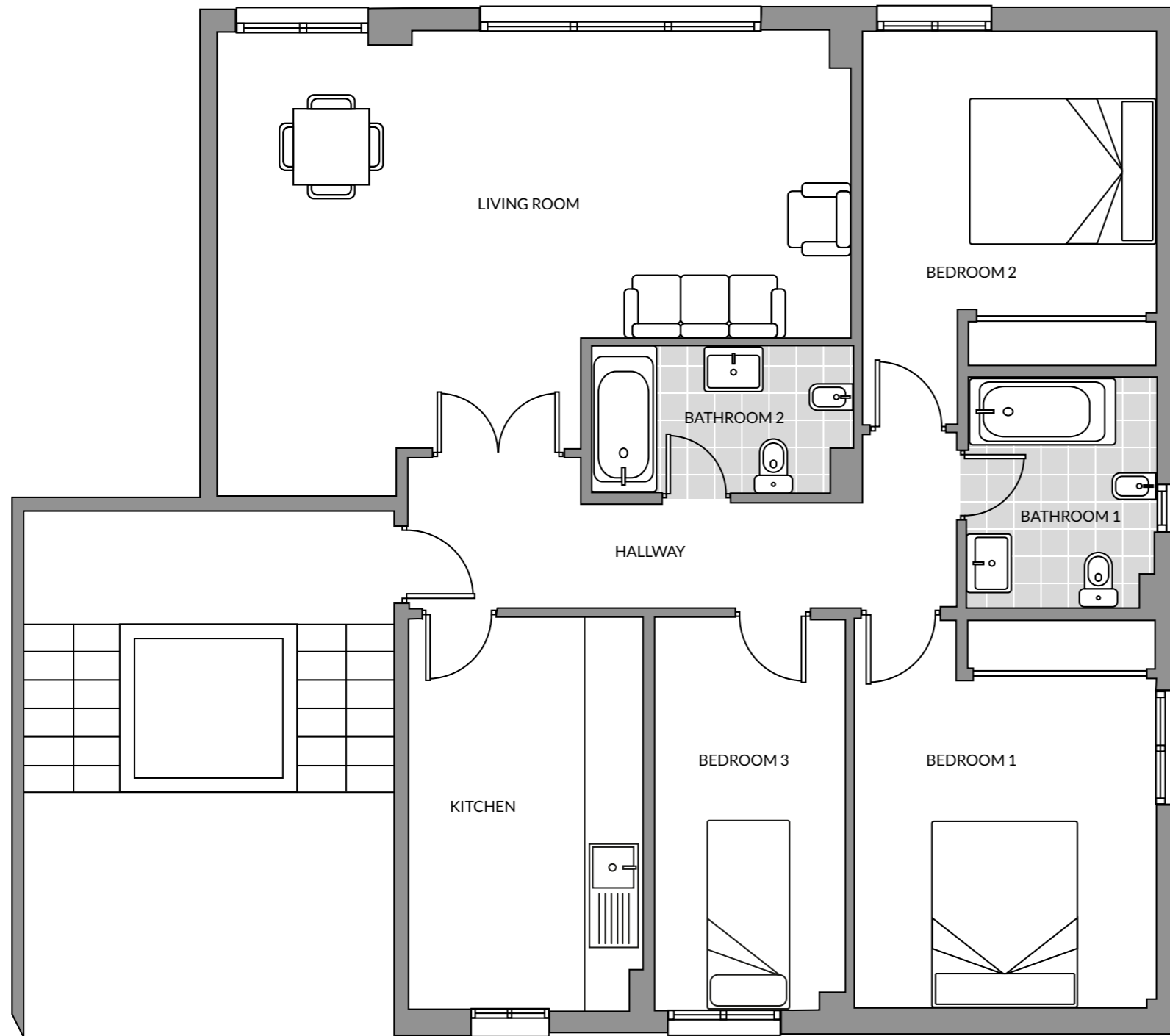
RAMADA®

HOTEL & SUITES BY WYNDHAM
COSTA DEL SOL

Marina Dorada - TYPE D

Bedroom 1	13.96 m ²
Bedroom 2	11.45 m ²
Kitchen	9.45 m ²
Bathroom	4.51 m ²
Living room	21.04 m ²
Hallway	2.50 m ²
Constructed area	62.91 m²

The present plan, building specifications and infographics are merely indicative, and are not contractual in nature in terms of colours, textures, vegetation, height of fencing and furniture, opening/rotation of openings, location of installations or sanitary fittings. Likewise, in the stairs leading down to the cellar or basement, if any, and the exit to patios and/or gardens, the number of steps and the level of the plots are for guidance purposes only. To this effect, IDILIQ GROUP reserves the right to introduce those modifications that are motivated by technical, constructive, legal, juridical or supply reasons that are indicated by the Project Management as being necessary or convenient for the correct completion of the building and/or that are ordered by the competent public bodies.



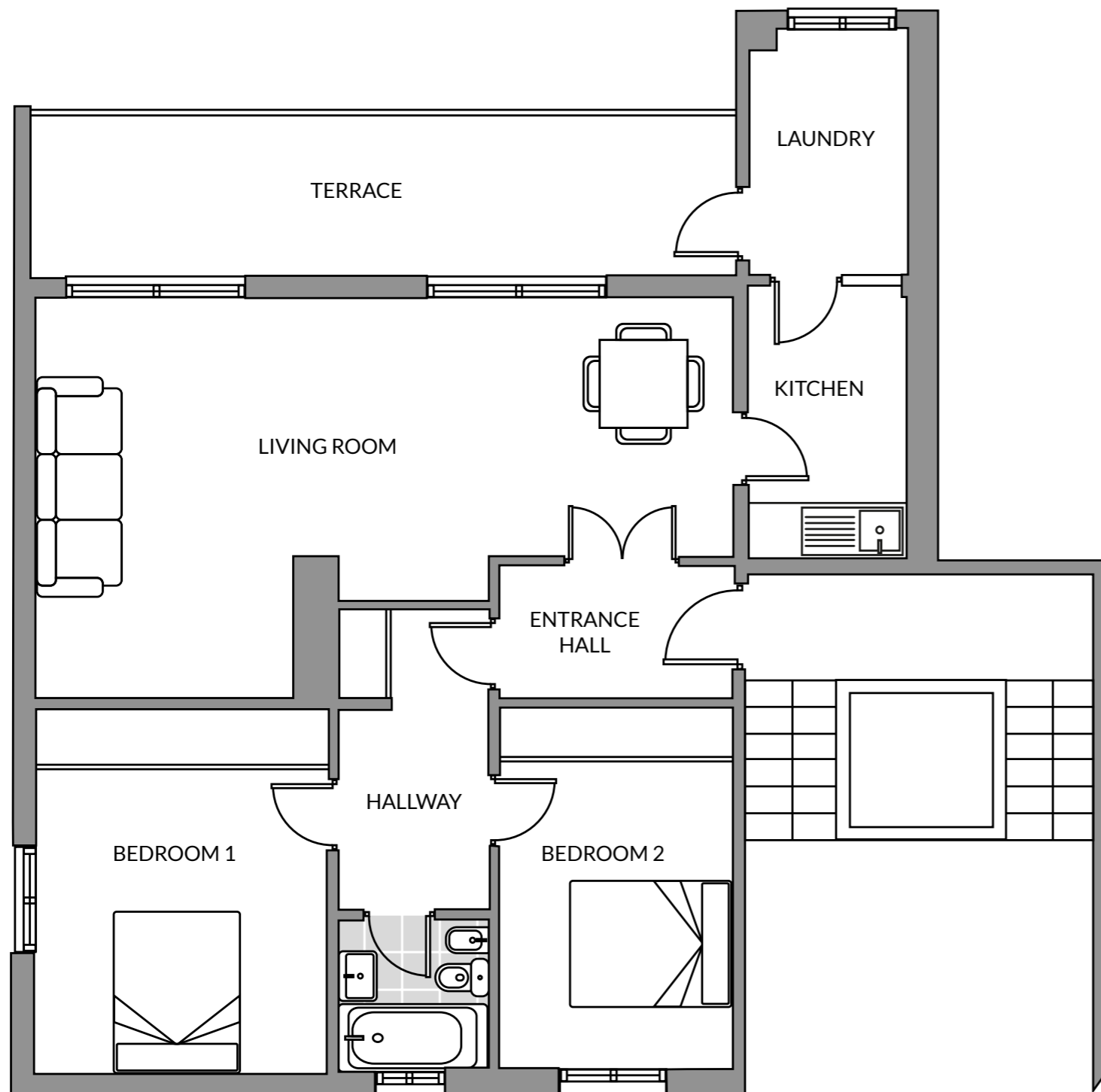
RAMADA®

HOTEL & SUITES BY WYNDHAM
COSTA DEL SOL

Marina Dorada - TYPE E

Bedroom 1	13.09 m ²
Bedroom 2	11.63 m ²
Bedroom 3	8.44 m ²
Kitchen	10.43 m ²
Bathroom 1	4.79 m ²
Bathroom 2	4.20 m ²
Living room	27.28 m ²
Hallway	8.09 m ²
Constructed area	87.95 m²

The present plan, building specifications and infographics are merely indicative, and are not contractual in nature in terms of colours, textures, vegetation, height of fencing and furniture, opening/rotation of openings, location of installations or sanitary fittings. Likewise, in the stairs leading down to the cellar or basement, if any, and the exit to patios and/or gardens, the number of steps and the level of the plots are for guidance purposes only. To this effect, IDILIQ GROUP reserves the right to introduce those modifications that are motivated by technical, constructive, legal, juridical or supply reasons that are indicated by the Project Management as being necessary or convenient for the correct completion of the building and/or that are ordered by the competent public bodies.



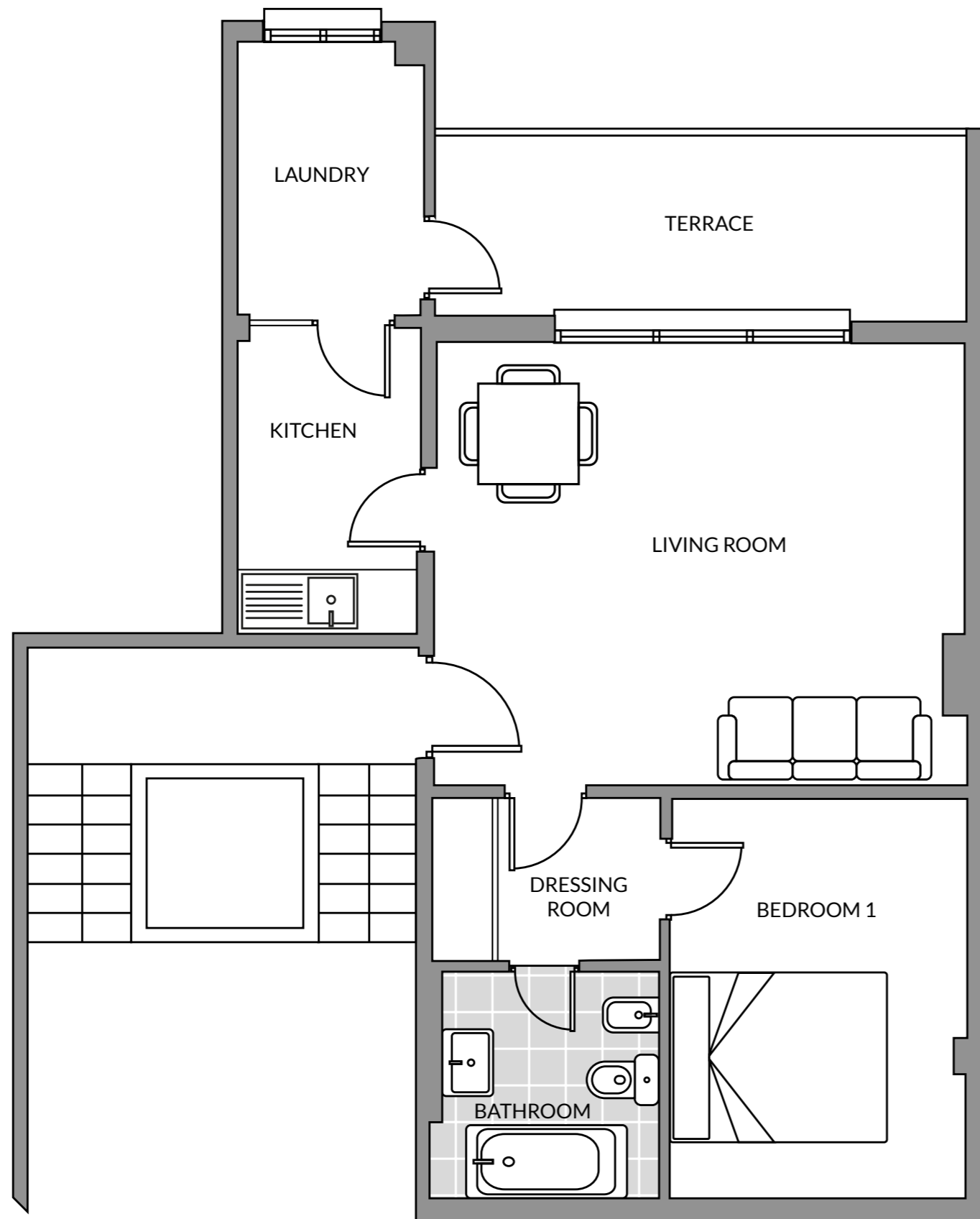
RAMADA®

HOTEL & SUITES BY WYNDHAM
COSTA DEL SOL

Marina Dorada - TYPE F

Bedroom 1	13.40 m ²
Bedroom 2	10.61 m ²
Kitchen	5.54 m ²
Bathroom	2.89 m ²
Living room	28.08 m ²
Terrace	14.75 m ²
Laundry	4.85 m ²
Entrance hall	3.92 m ²
Hallway	4.69 m ²
Constructed area	88.73 m²

The present plan, building specifications and infographics are merely indicative, and are not contractual in nature in terms of colours, textures, vegetation, height of fencing and furniture, opening/rotation of openings, location of installations or sanitary fittings. Likewise, in the stairs leading down to the cellar or basement, if any, and the exit to patios and/or gardens, the number of steps and the level of the plots are for guidance purposes only. To this effect, IDILIQ GROUP reserves the right to introduce those modifications that are motivated by technical, constructive, legal, juridical or supply reasons that are indicated by the Project Management as being necessary or convenient for the correct completion of the building and/or that are ordered by the competent public bodies.



RAMADA®

HOTEL & SUITES BY WYNDHAM
COSTA DEL SOL

Marina Dorada - TYPE G

Bedroom 1	12.47 m ²
Dressing room	3.82 m ²
Kitchen	5.54 m ²
Bathroom	5.08 m ²
Living room	24.46 m ²
Terrace	10.23 m ²
Laundry	4.85 m ²
Constructed area	66.45 m²

The present plan, building specifications and infographics are merely indicative, and are not contractual in nature in terms of colours, textures, vegetation, height of fencing and furniture, opening/rotation of openings, location of installations or sanitary fittings. Likewise, in the stairs leading down to the cellar or basement, if any, and the exit to patios and/or gardens, the number of steps and the level of the plots are for guidance purposes only. To this effect, IDILIQ GROUP reserves the right to introduce those modifications that are motivated by technical, constructive, legal, juridical or supply reasons that are indicated by the Project Management as being necessary or convenient for the correct completion of the building and/or that are ordered by the competent public bodies.