

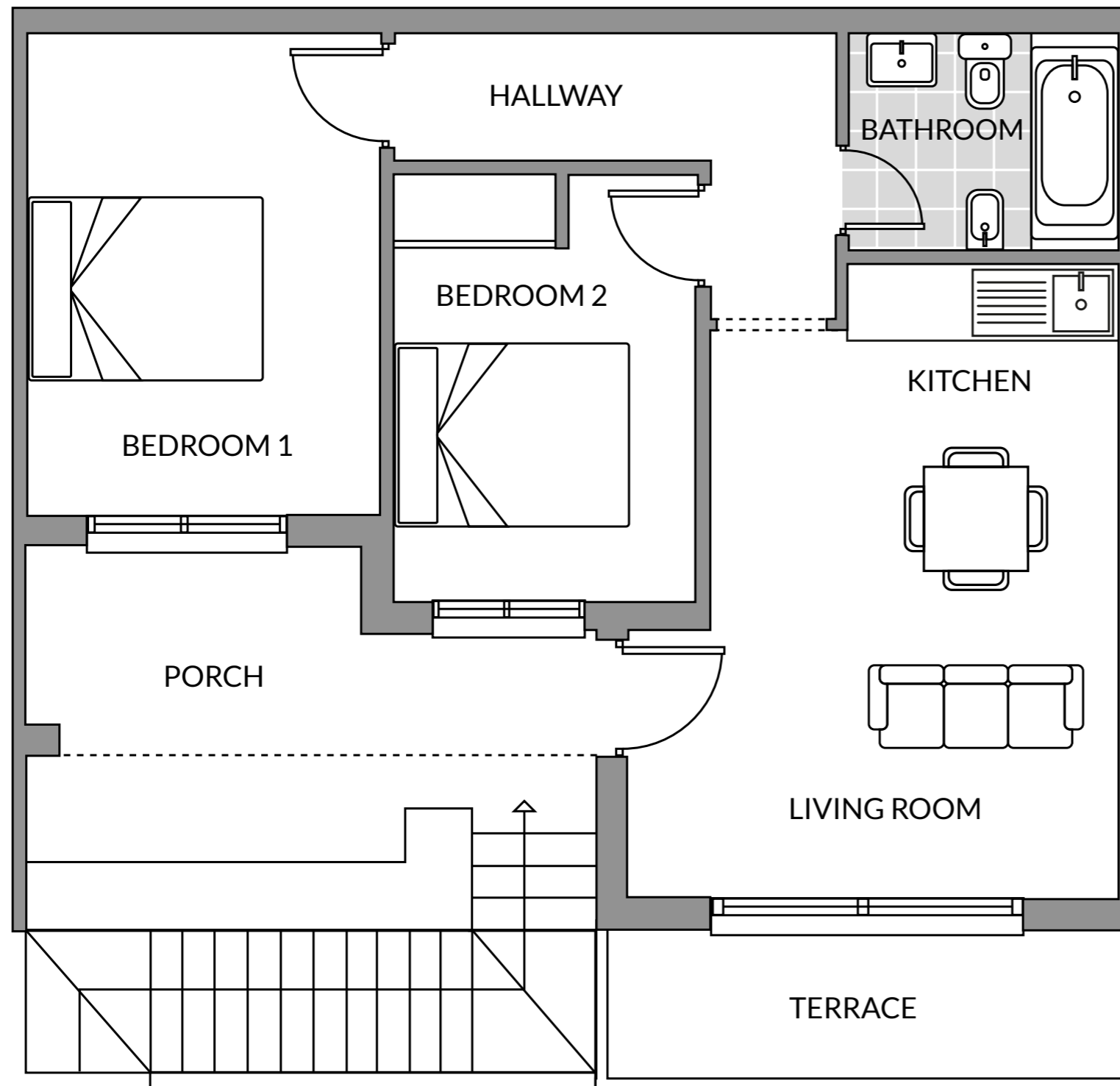
**RAMADA**<sup>®</sup>  
HOTEL & SUITES BY WYNDHAM  
COSTA DEL SOL

**Pueblo Marina - TYPE A**

Bedroom 1	15.46 m <sup>2</sup>
Bedroom 2	9.50 m <sup>2</sup>
Kitchen	3.46 m <sup>2</sup>
Bathroom	3.79 m <sup>2</sup>
Living room	14.94 m <sup>2</sup>
<b>Constructed area</b>	<b>81.11 m<sup>2</sup></b>

\*Excludes terraces

The present plan, building specifications and infographics are merely indicative, and are not contractual in nature in terms of colours, textures, vegetation, height of fencing and furniture, opening/rotation of openings, location of installations or sanitary fittings. Likewise, in the stairs leading down to the cellar or basement, if any, and the exit to patios and/or gardens, the number of steps and the level of the plots are for guidance purposes only. To this effect, IDILIQ GROUP reserves the right to introduce those modifications that are motivated by technical, constructive, legal, juridical or supply reasons that are indicated by the Project Management as being necessary or convenient for the correct completion of the building and/or that are ordered by the competent public bodies.



# RAMADA®

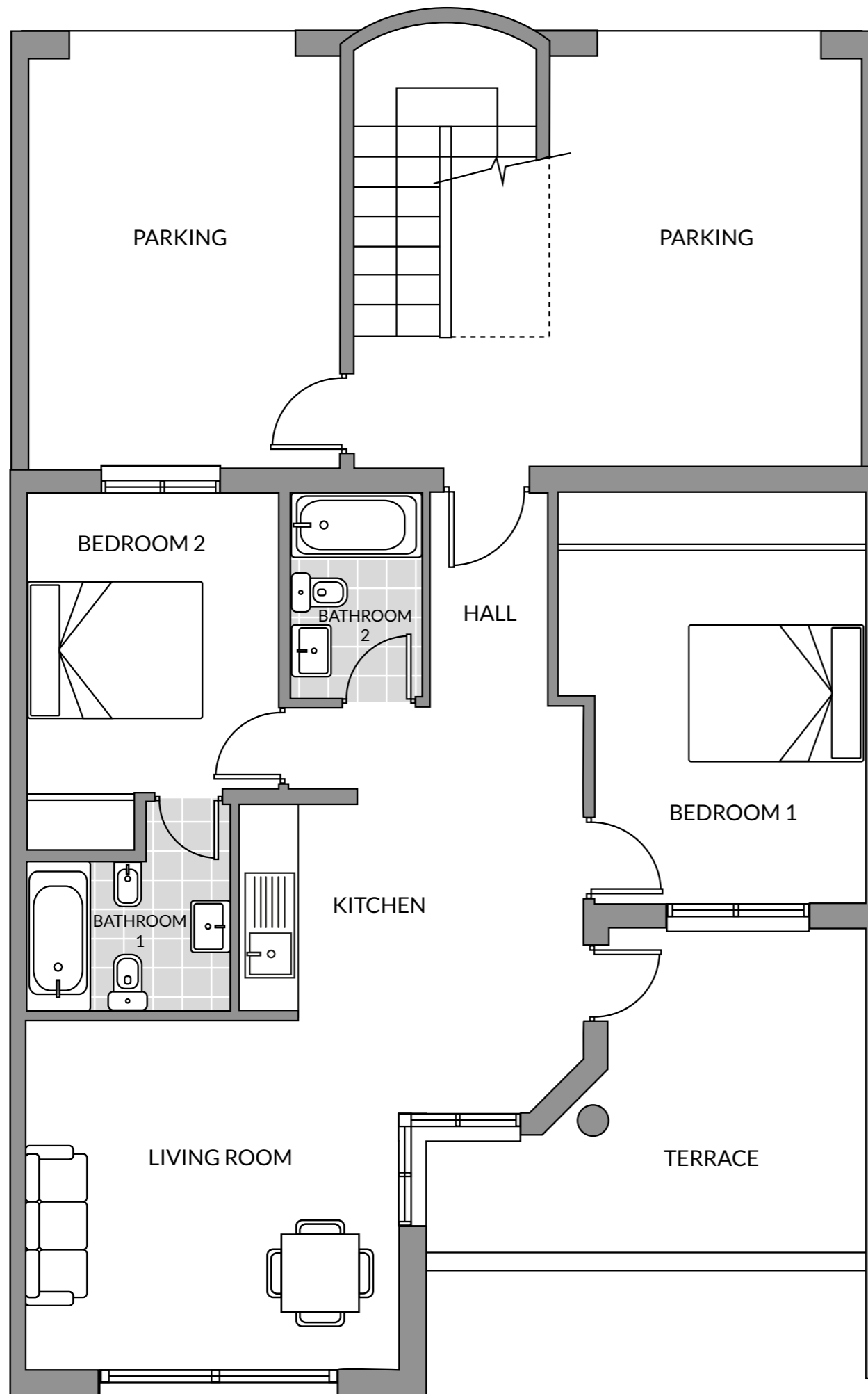
HOTEL & SUITES BY WYNDHAM  
COSTA DEL SOL

## Pueblo Marina - TYPE B

Bedroom 1	10.90 m <sup>2</sup>
Bedroom 2	8.25 m <sup>2</sup>
Kitchen	2.60 m <sup>2</sup>
Bathroom	3.76 m <sup>2</sup>
Living room	15.37 m <sup>2</sup>
<b>Constructed area</b>	<b>68.94 m<sup>2</sup></b>

\*Excludes terraces

The present plan, building specifications and infographics are merely indicative, and are not contractual in nature in terms of colours, textures, vegetation, height of fencing and furniture, opening/rotation of openings, location of installations or sanitary fittings. Likewise, in the stairs leading down to the cellar or basement, if any, and the exit to patios and/or gardens, the number of steps and the level of the plots are for guidance purposes only. To this effect, IDILIQ GROUP reserves the right to introduce those modifications that are motivated by technical, constructive, legal, juridical or supply reasons that are indicated by the Project Management as being necessary or convenient for the correct completion of the building and/or that are ordered by the competent public bodies.



# RAMADA®

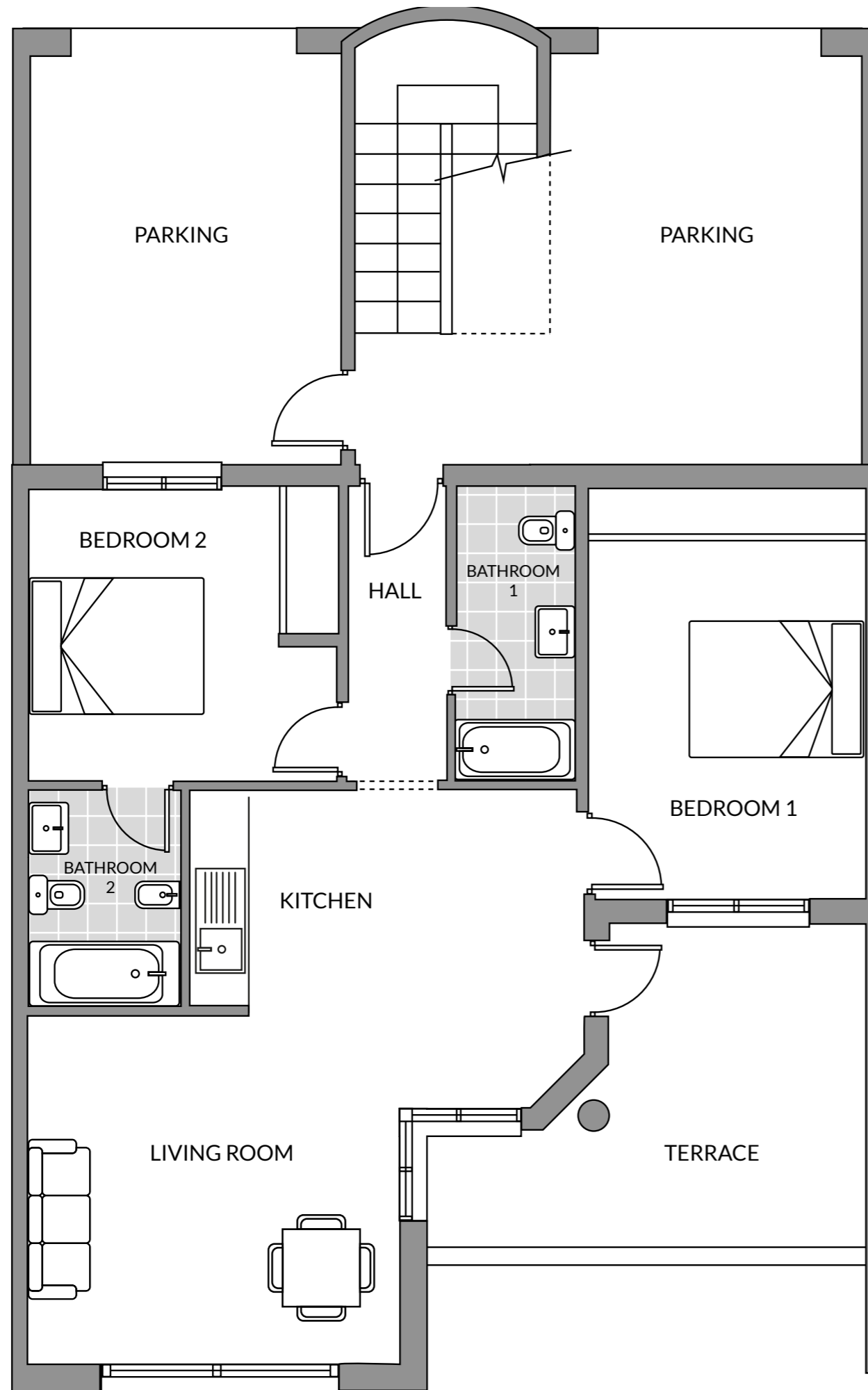
HOTEL & SUITES BY WYNDHAM  
COSTA DEL SOL

## Pueblo Marina - TYPE C

Bedroom 1	13.15 m <sup>2</sup>
Bedroom 2	9.02 m <sup>2</sup>
Kitchen	2.75 m <sup>2</sup>
Bathroom 1	4.00 m <sup>2</sup>
Bathroom 2	3.00 m <sup>2</sup>
Hall	2.70 m <sup>2</sup>
Living room	24.88 m <sup>2</sup>
<b>Constructed area</b>	<b>70.20 m<sup>2</sup></b>

\*Excludes terraces

The present plan, building specifications and infographics are merely indicative, and are not contractual in nature in terms of colours, textures, vegetation, height of fencing and furniture, opening/rotation of openings, location of installations or sanitary fittings. Likewise, in the stairs leading down to the cellar or basement, if any, and the exit to patios and/or gardens, the number of steps and the level of the plots are for guidance purposes only. To this effect, IDILIQ GROUP reserves the right to introduce those modifications that are motivated by technical, constructive, legal, juridical or supply reasons that are indicated by the Project Management as being necessary or convenient for the correct completion of the building and/or that are ordered by the competent public bodies.



# RAMADA®

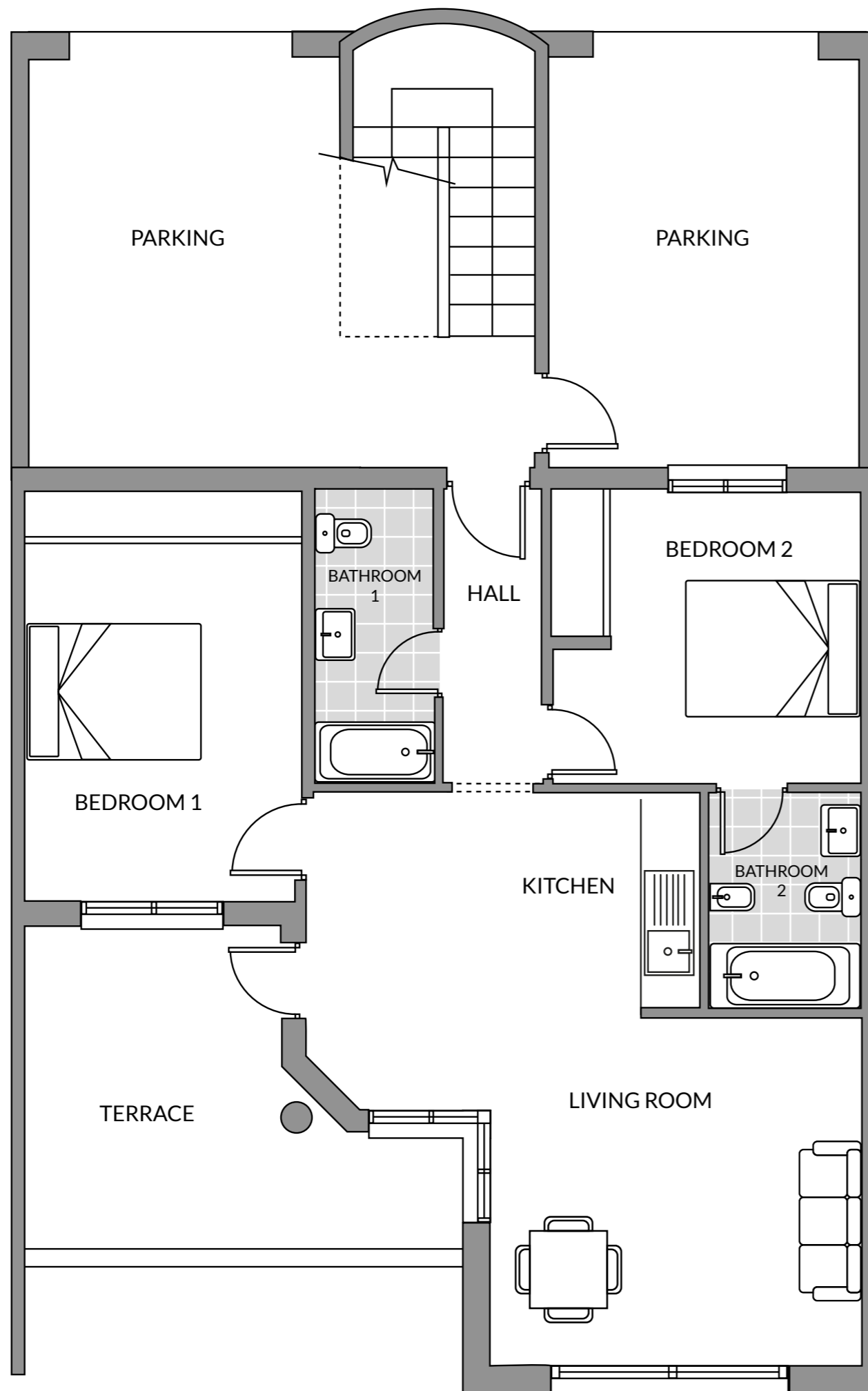
HOTEL & SUITES BY WYNDHAM  
COSTA DEL SOL

## Pueblo Marina - TYPE D

Bedroom 1	12.07 m <sup>2</sup>
Bedroom 2	10.33 m <sup>2</sup>
Kitchen	3.83 m <sup>2</sup>
Bathroom 1	4.10 m <sup>2</sup>
Bathroom 2	3.83 m <sup>2</sup>
Hall	3.28 m <sup>2</sup>
Living room	22.63 m <sup>2</sup>
<b>Constructed area</b>	<b>81.93 m<sup>2</sup></b>

\*Excludes terraces

The present plan, building specifications and infographics are merely indicative, and are not contractual in nature in terms of colours, textures, vegetation, height of fencing and furniture, opening/rotation of openings, location of installations or sanitary fittings. Likewise, in the stairs leading down to the cellar or basement, if any, and the exit to patios and/or gardens, the number of steps and the level of the plots are for guidance purposes only. To this effect, IDILIQ GROUP reserves the right to introduce those modifications that are motivated by technical, constructive, legal, juridical or supply reasons that are indicated by the Project Management as being necessary or convenient for the correct completion of the building and/or that are ordered by the competent public bodies.



# RAMADA®

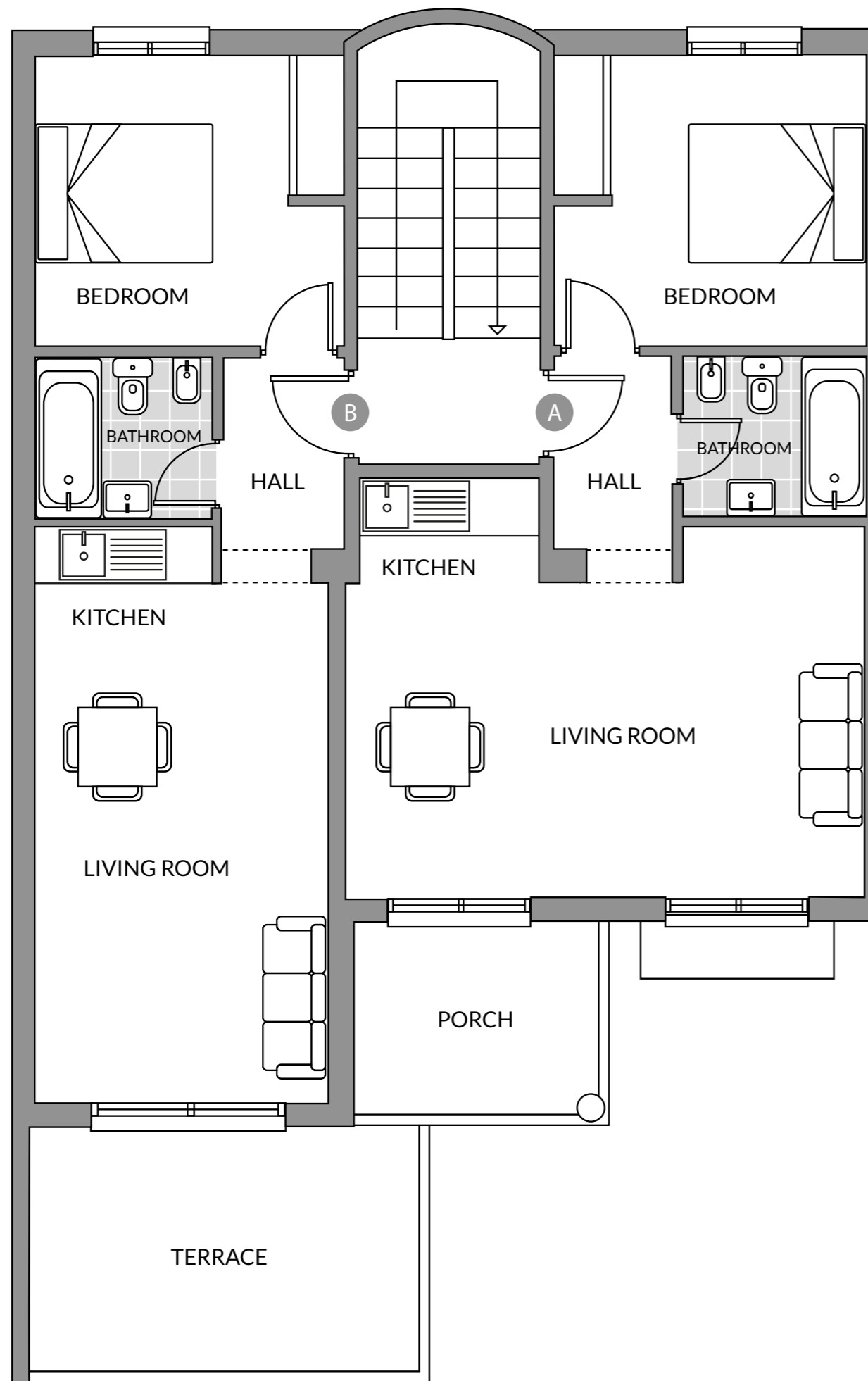
HOTEL & SUITES BY WYNDHAM  
COSTA DEL SOL

## Pueblo Marina - TYPE E

Bedroom 1	12.07 m <sup>2</sup>
Bedroom 2	10.33 m <sup>2</sup>
Kitchen	3.83 m <sup>2</sup>
Bathroom 1	4.10 m <sup>2</sup>
Bathroom 2	3.83 m <sup>2</sup>
Hall	3.28 m <sup>2</sup>
Living room	22.63 m <sup>2</sup>
<b>Constructed area</b>	<b>81.93 m<sup>2</sup></b>

\*Excludes terraces

The present plan, building specifications and infographics are merely indicative, and are not contractual in nature in terms of colours, textures, vegetation, height of fencing and furniture, opening/rotation of openings, location of installations or sanitary fittings. Likewise, in the stairs leading down to the cellar or basement, if any, and the exit to patios and/or gardens, the number of steps and the level of the plots are for guidance purposes only. To this effect, IDILIQ GROUP reserves the right to introduce those modifications that are motivated by technical, constructive, legal, juridical or supply reasons that are indicated by the Project Management as being necessary or convenient for the correct completion of the building and/or that are ordered by the competent public bodies.



# RAMADA®

HOTEL & SUITES BY WYNDHAM  
COSTA DEL SOL

## Pueblo Marina - TYPE F

Bedroom	10.20 m <sup>2</sup>
Kitchen	3.83 m <sup>2</sup>
Bathroom	3.23 m <sup>2</sup>
Hall	2.95 m <sup>2</sup>
Living room	18.38 m <sup>2</sup>
<b>Constructed area</b>	<b>60.37 m<sup>2</sup></b>

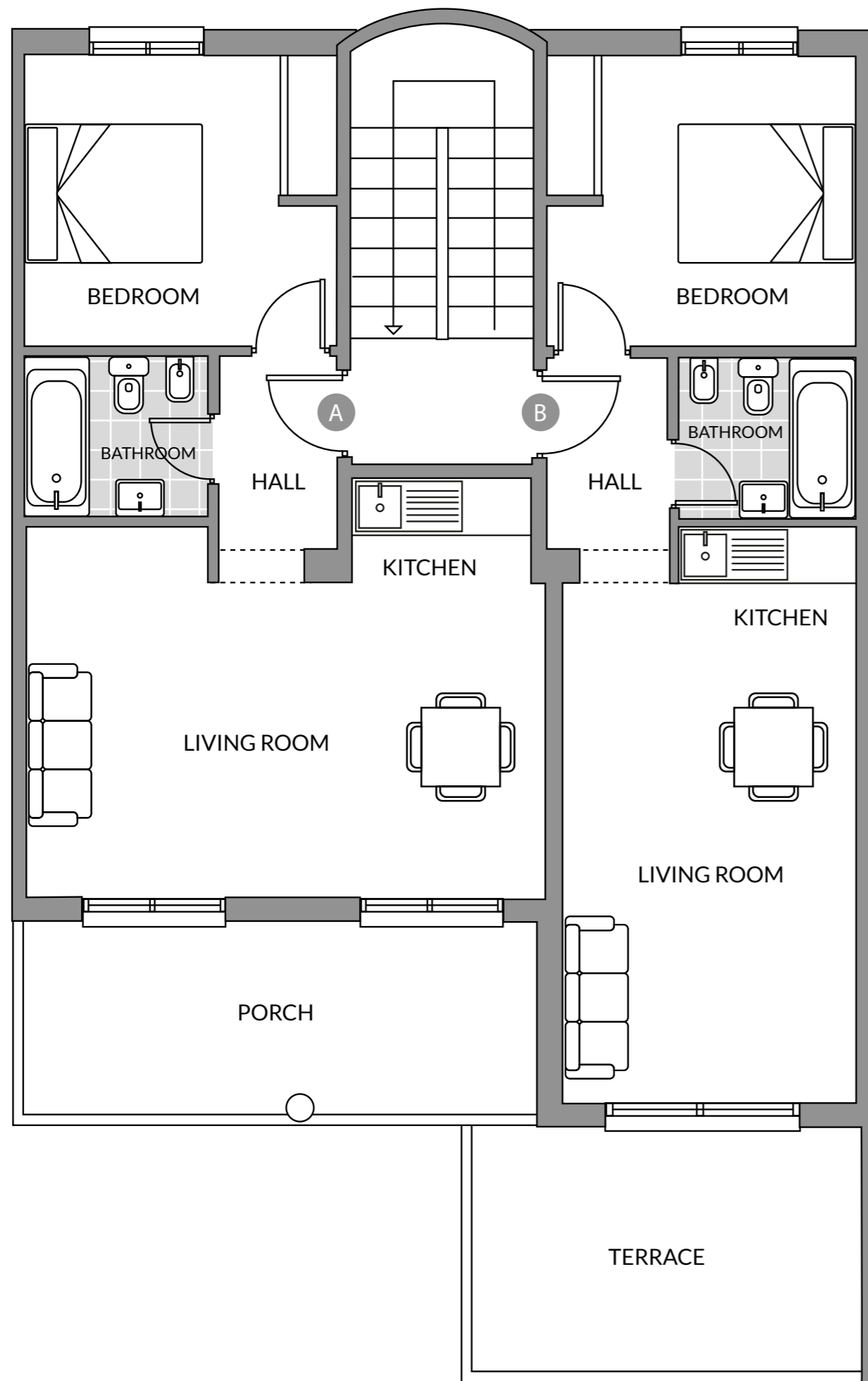
\*Excludes terraces

## Pueblo Marina - TYPE G

Bedroom	10.20 m <sup>2</sup>
Kitchen	2.35 m <sup>2</sup>
Bathroom	3.23 m <sup>2</sup>
Hall	2.95 m <sup>2</sup>
Living room	15.85 m <sup>2</sup>
<b>Constructed area</b>	<b>57.41 m<sup>2</sup></b>

\*Excludes terraces

The present plan, building specifications and infographics are merely indicative, and are not contractual in nature in terms of colours, textures, vegetation, height of fencing and furniture, opening/rotation of openings, location of installations or sanitary fittings. Likewise, in the stairs leading down to the cellar or basement, if any, and the exit to patios and/or gardens, the number of steps and the level of the plots are for guidance purposes only. To this effect, IDILIQ GROUP reserves the right to introduce those modifications that are motivated by technical, constructive, legal, juridical or supply reasons that are indicated by the Project Management as being necessary or convenient for the correct completion of the building and/or that are ordered by the competent public bodies.



# RAMADA®

HOTEL & SUITES BY WYNDHAM  
COSTA DEL SOL

## Pueblo Marina - TYPE H

Bedroom	10.20 m <sup>2</sup>
Kitchen	3.83 m <sup>2</sup>
Bathroom	3.23 m <sup>2</sup>
Hall	2.95 m <sup>2</sup>
Living room	18.38 m <sup>2</sup>
<b>Constructed area</b>	<b>60.37 m<sup>2</sup></b>

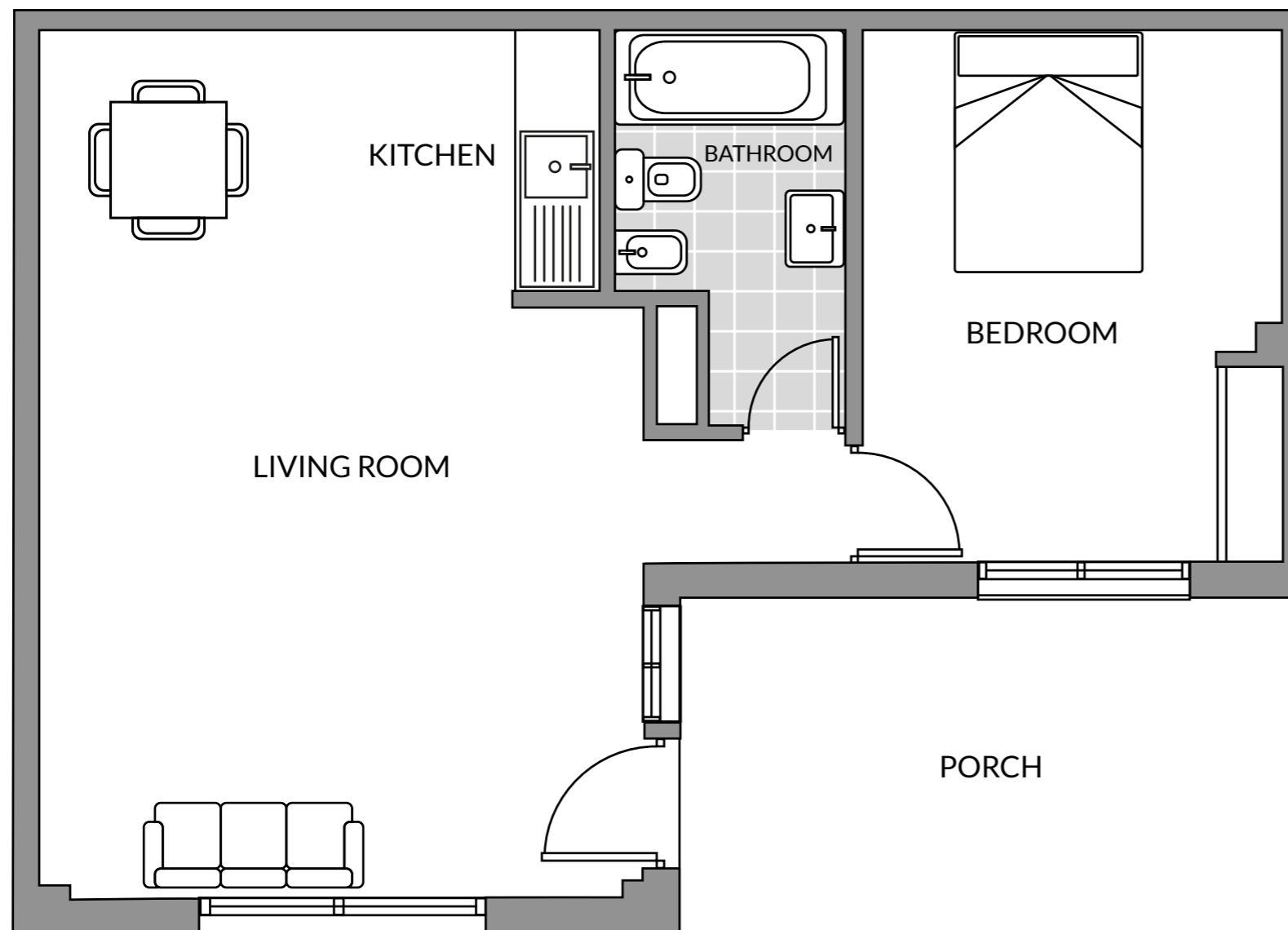
\*Excludes terraces

## Pueblo Marina - TYPE I

Bedroom	10.20 m <sup>2</sup>
Kitchen	2.35 m <sup>2</sup>
Bathroom	3.23 m <sup>2</sup>
Hall	2.95 m <sup>2</sup>
Living room	15.85 m <sup>2</sup>
<b>Constructed area</b>	<b>57.41 m<sup>2</sup></b>

\*Excludes terraces

The present plan, building specifications and infographics are merely indicative, and are not contractual in nature in terms of colours, textures, vegetation, height of fencing and furniture, opening/rotation of openings, location of installations or sanitary fittings. Likewise, in the stairs leading down to the cellar or basement, if any, and the exit to patios and/or gardens, the number of steps and the level of the plots are for guidance purposes only. To this effect, IDILIQ GROUP reserves the right to introduce those modifications that are motivated by technical, constructive, legal, juridical or supply reasons that are indicated by the Project Management as being necessary or convenient for the correct completion of the building and/or that are ordered by the competent public bodies.



**RAMADA**<sup>®</sup>  
HOTEL & SUITES BY WYNDHAM  
COSTA DEL SOL

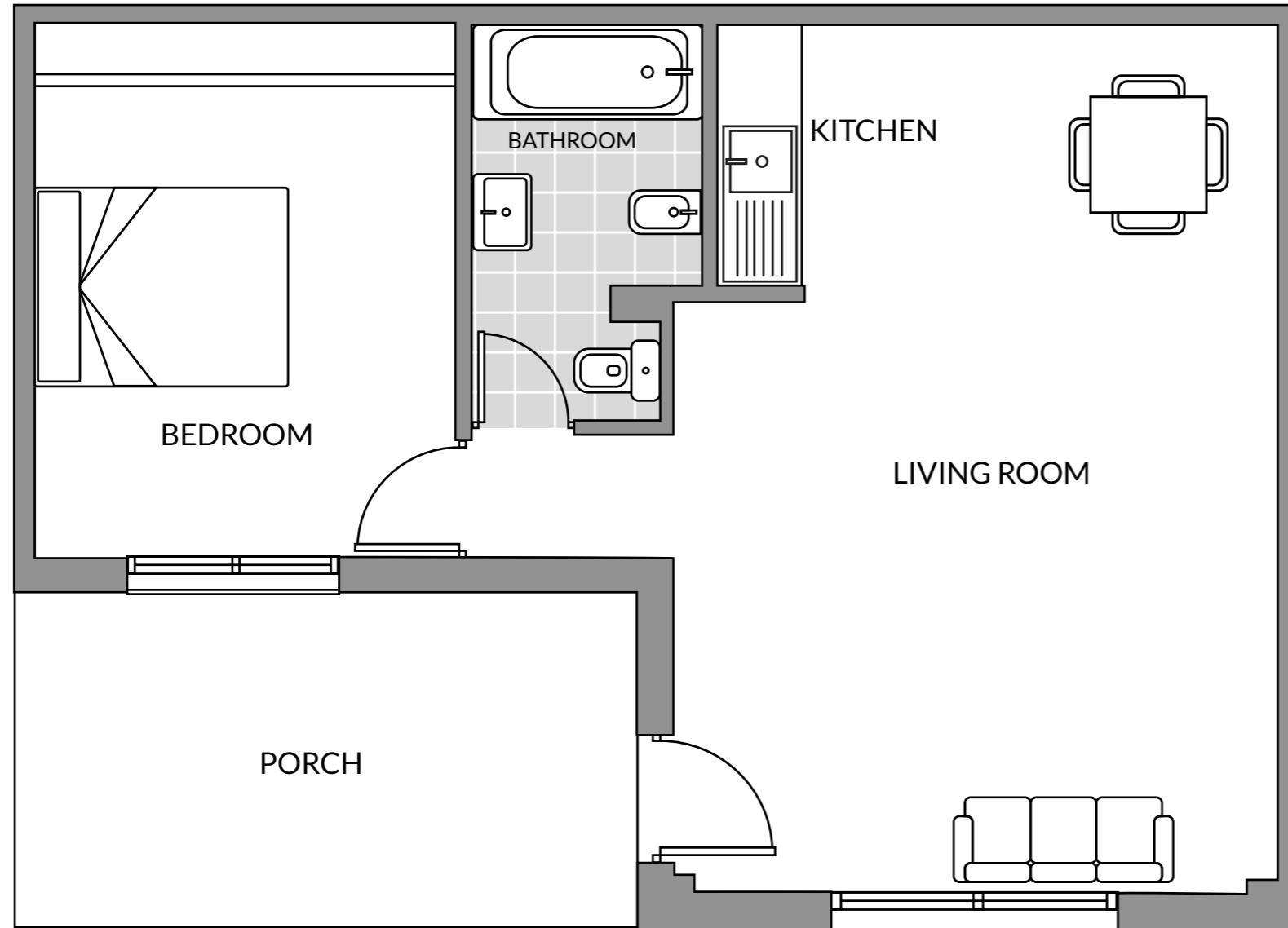
**Pueblo Marina - TYPE J**

Bedroom	11.11 m <sup>2</sup>
Kitchen	3.68 m <sup>2</sup>
Bathroom	3.89 m <sup>2</sup>
Living room	22.63 m <sup>2</sup>
<b>Constructed area</b>	<b>64.29 m<sup>2</sup></b>

\*Excludes terraces

The present plan, building specifications and infographics are merely indicative, and are not contractual in nature in terms of colours, textures, vegetation, height of fencing and furniture, opening/rotation of openings, location of installations or sanitary fittings. Likewise, in the stairs leading down to the cellar or basement, if any, and the exit to patios and/or gardens, the number of steps and the level of the plots are for guidance purposes only. To this effect, IDILIQ GROUP reserves the right to introduce those modifications that are motivated by technical, constructive, legal, juridical or supply reasons that are indicated by the Project Management as being necessary or convenient for the correct completion of the building and/or that are ordered by the competent public bodies.





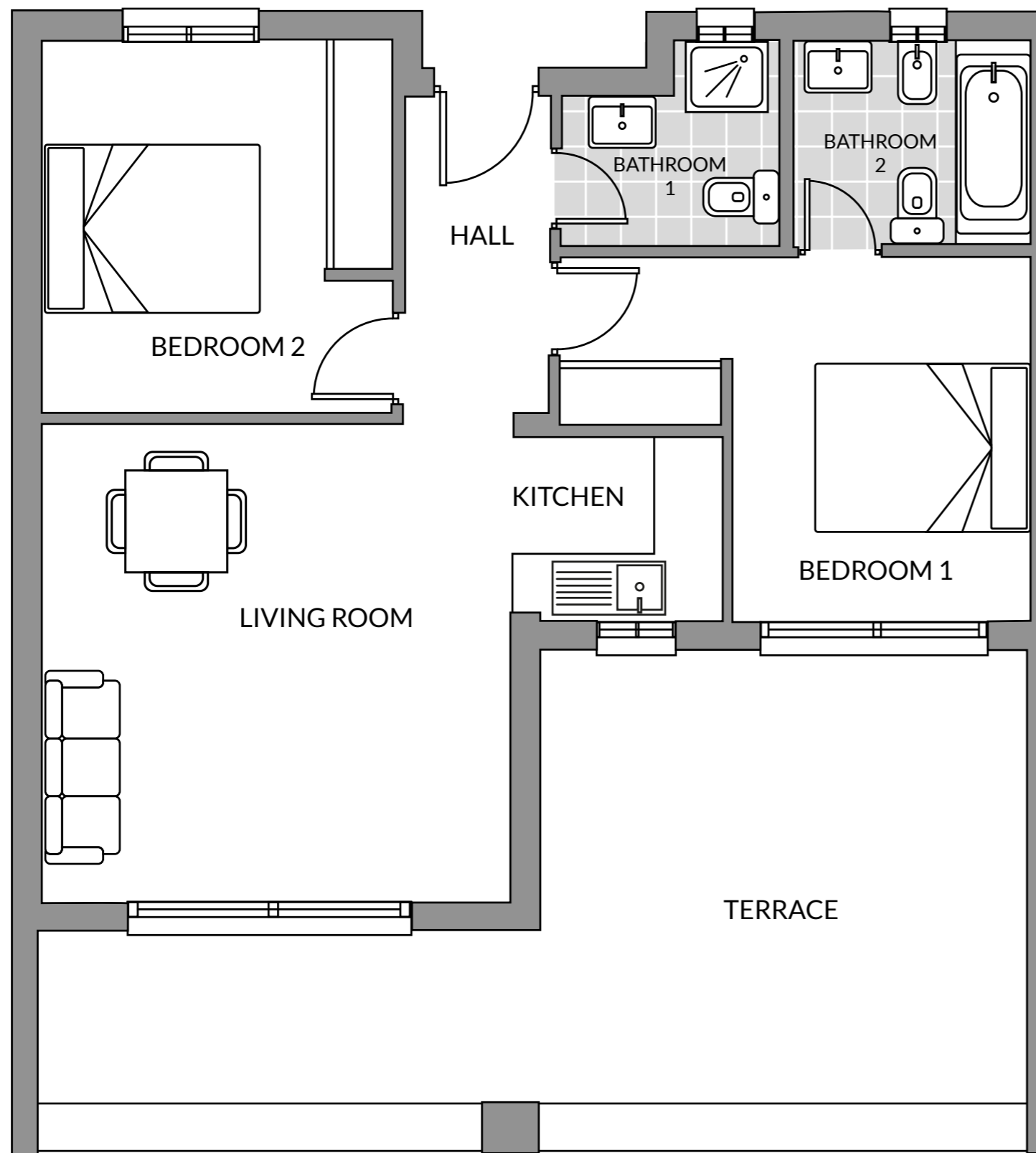
**RAMADA**  
HOTEL & SUITES BY WYNDHAM  
COSTA DEL SOL

**Pueblo Marina - TYPE K**

Bedroom	11.20 m <sup>2</sup>
Kitchen	3.68 m <sup>2</sup>
Bathroom	4.12 m <sup>2</sup>
Living room	22.63 m <sup>2</sup>
<b>Constructed area</b>	<b>64.29 m<sup>2</sup></b>

\*Excludes terraces

The present plan, building specifications and infographics are merely indicative, and are not contractual in nature in terms of colours, textures, vegetation, height of fencing and furniture, opening/rotation of openings, location of installations or sanitary fittings. Likewise, in the stairs leading down to the cellar or basement, if any, and the exit to patios and/or gardens, the number of steps and the level of the plots are for guidance purposes only. To this effect, IDILIQ GROUP reserves the right to introduce those modifications that are motivated by technical, constructive, legal, juridical or supply reasons that are indicated by the Project Management as being necessary or convenient for the correct completion of the building and/or that are ordered by the competent public bodies.



# RAMADA®

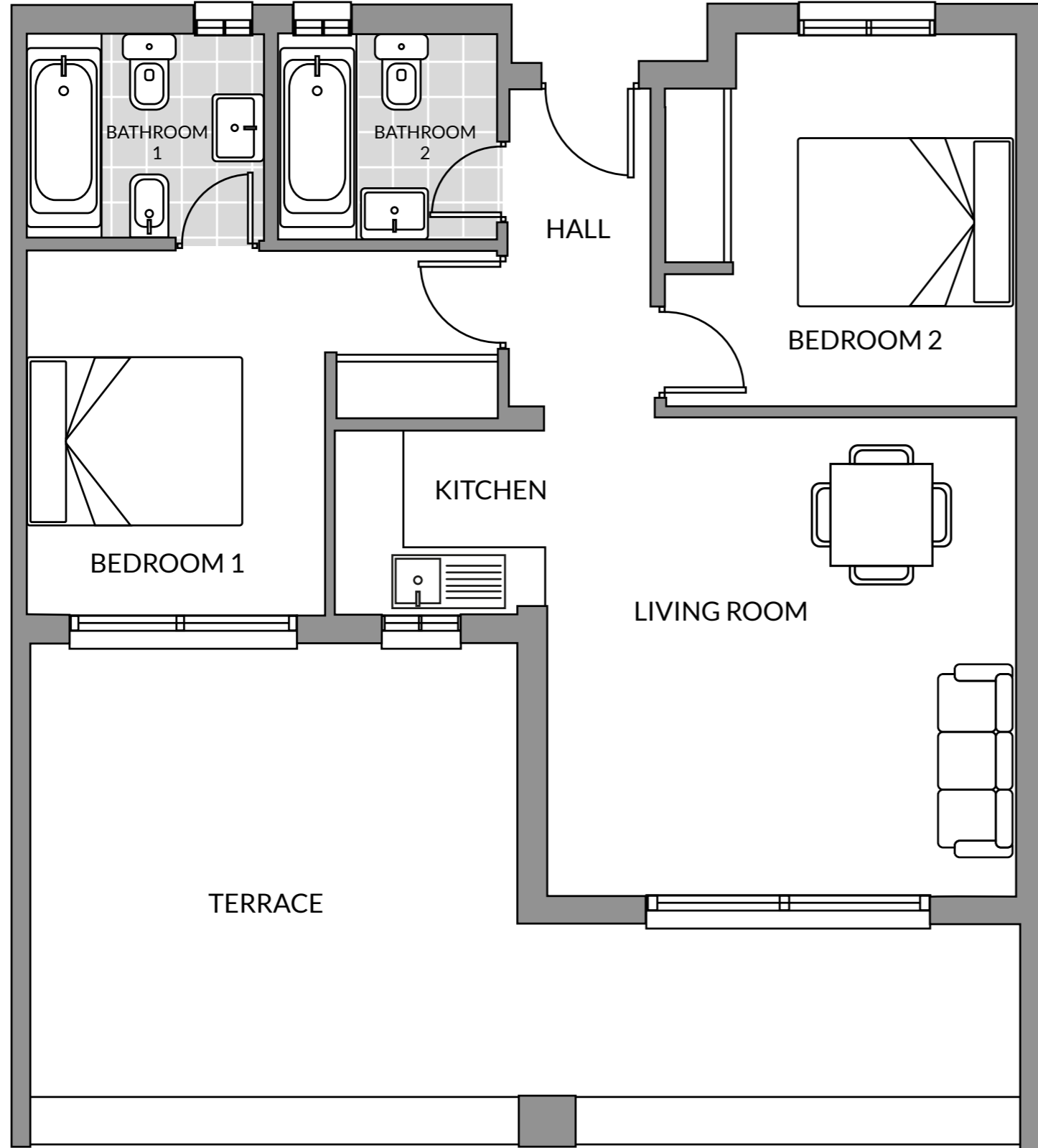
HOTEL & SUITES BY WYNDHAM  
COSTA DEL SOL

## Pueblo Marina - TYPE L

Bedroom 1	10.79m <sup>2</sup>
Bedroom 2	10.12 m <sup>2</sup>
Kitchen	3.05 m <sup>2</sup>
Bathroom 1	3.92 m <sup>2</sup>
Bathroom 2	3.61 m <sup>2</sup>
Hall	3.85 m <sup>2</sup>
Living room	18.00 m <sup>2</sup>
<b>Constructed area</b>	<b>90.51 m<sup>2</sup></b>

\*Excludes terraces

The present plan, building specifications and infographics are merely indicative, and are not contractual in nature in terms of colours, textures, vegetation, height of fencing and furniture, opening/rotation of openings, location of installations or sanitary fittings. Likewise, in the stairs leading down to the cellar or basement, if any, and the exit to patios and/or gardens, the number of steps and the level of the plots are for guidance purposes only. To this effect, IDILIQ GROUP reserves the right to introduce those modifications that are motivated by technical, constructive, legal, juridical or supply reasons that are indicated by the Project Management as being necessary or convenient for the correct completion of the building and/or that are ordered by the competent public bodies.



# RAMADA®

HOTEL & SUITES BY WYNDHAM  
COSTA DEL SOL

## Pueblo Marina - TYPE M

Bedroom 1	10.79m <sup>2</sup>
Bedroom 2	10.12 m <sup>2</sup>
Kitchen	3.05 m <sup>2</sup>
Bathroom 1	3.92 m <sup>2</sup>
Bathroom 2	3.61 m <sup>2</sup>
Hall	3.85 m <sup>2</sup>
Living room	18.00 m <sup>2</sup>
<b>Constructed area</b>	<b>90.51 m<sup>2</sup></b>

\*Excludes terraces

The present plan, building specifications and infographics are merely indicative, and are not contractual in nature in terms of colours, textures, vegetation, height of fencing and furniture, opening/rotation of openings, location of installations or sanitary fittings. Likewise, in the stairs leading down to the cellar or basement, if any, and the exit to patios and/or gardens, the number of steps and the level of the plots are for guidance purposes only. To this effect, IDILIQ GROUP reserves the right to introduce those modifications that are motivated by technical, constructive, legal, juridical or supply reasons that are indicated by the Project Management as being necessary or convenient for the correct completion of the building and/or that are ordered by the competent public bodies.