

OSLO 79

LAS BRISAS, NUEVA ANDALUCIA



CHARMING MODERN VILLA WITH A PRIME LOCATION IN NUEVA ANDALUCIA

Oslo 79 is a modern villa epitomising luxurious living, nestled steps away from the members-only golf course Las Brisas, boasting an enviable location in Nueva Andalucia. Recently built, its striking contemporary architecture seamlessly blends with its expansive surroundings.

Beds: 4 | Baths: 4+1 | Plot: 1.250m² | Built: 380m² | Parking: 3 | Orientation: N/W



Set upon a generous plot, the property boasts meticulously landscaped gardens adorned with trees, ensuring both tranquillity and privacy.

Designed for outdoor indulgence, Oslo 79 features a private pool and ample terraces perfect for al fresco dining and relaxation. A charming pergola by the poolside hosts an outdoor kitchenette with a barbecue, ideal for entertaining guests.





The property's layout effortlessly integrates indoor and outdoor spaces, fostering a true indoor-outdoor lifestyle. The bespoke kitchen is a culinary haven, combining aesthetics with functionality, featuring state-of-the-art appliances, elegant marble and wooden accents, and a luxurious wine fridge.







The ground floor showcases an open-plan design, with each area seamlessly flowing into the next, offering direct access to the inviting terrace from every corner. The bespoke interior design exudes sophistication and attention to detail.





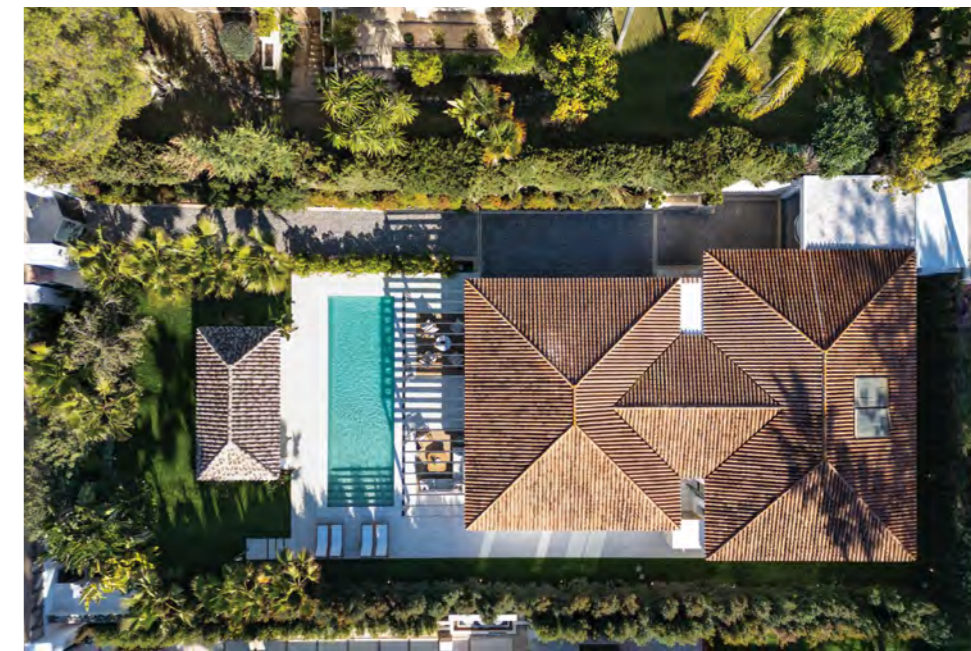
All bedrooms, including the lavish master suite, are thoughtfully designed for modern comfort, each boasting its own ensuite bathroom and walk-in closet. The master bedroom, a sanctuary of opulence, treats residents to breathtaking garden views, a walk-in wardrobe, an office space and a master bathroom complete with a stand-alone shower, bathtub, and double vanity.



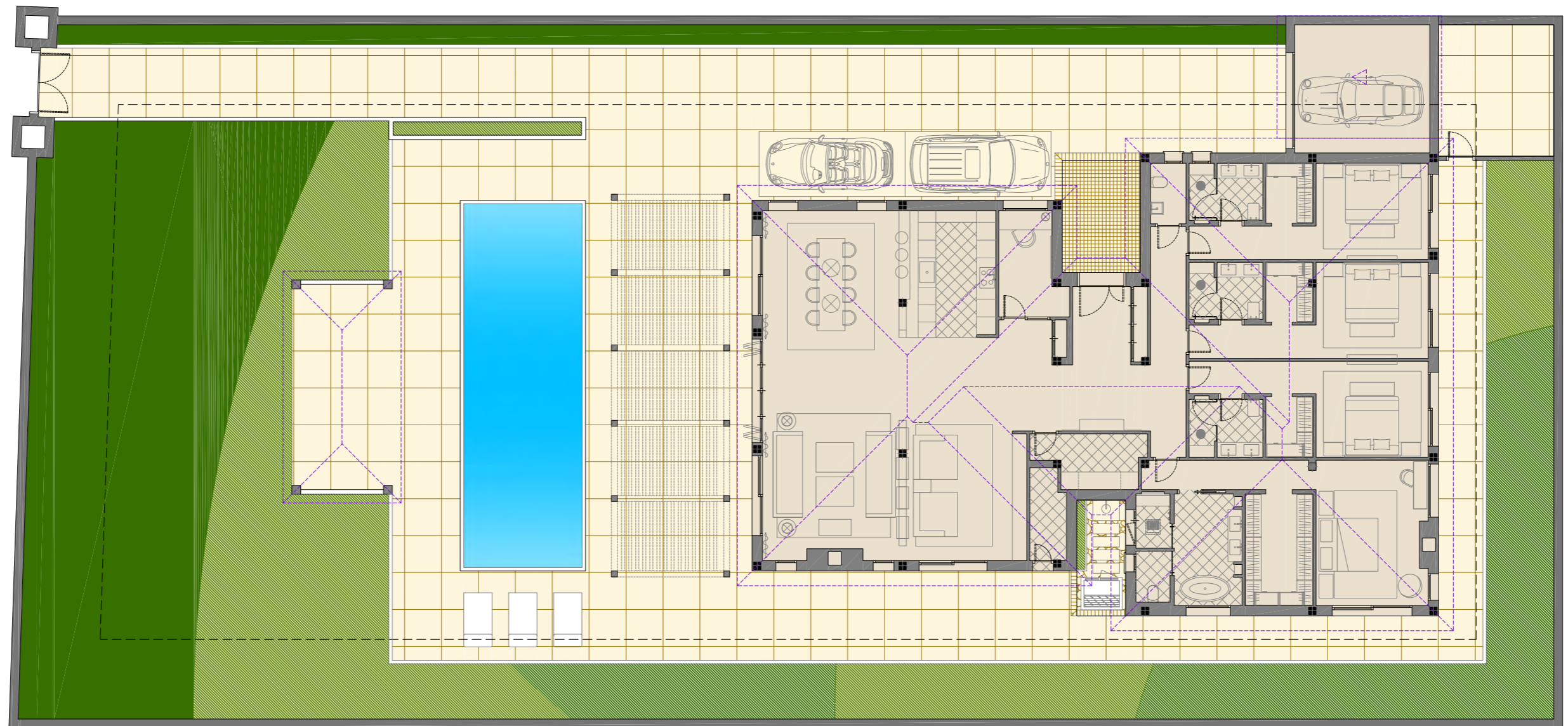








Situated in the prestigious Golf Valley, Oslo 79 enjoys proximity to upscale amenities, 5-star golf courses, and the vibrant hubs of Puerto Banus and Marbella, offering an unparalleled lifestyle of luxury and convenience.



Beds: 4 | Baths: 4+1 | Plot: 1.250m² | Built: 380m² | Parking: 3 | Orientation: N/W

QUALITY SPECIFICATIONS

SOLE

EXTERIOR

- - Cream Marfil marble floor measuring 60x60 cm.
- - Cream Marfil marble step, 20 cm high.

INTERIOR

- - Ibiza Best model oak board with dimensions 1,900x190x14/3 mm.
- - Lacquered wooden step, 20 cm tall, white.

INTERIOR CARPENTER

- Step doors made of lacquered MDF NCS S 0500N. Roma Garfiado model handles finished in black with magnetic pickaxe.
- Cabinets made of lacquered MDF NCS S 0500 N. Manor Garfilado handle. Hardware executed with great elegance from Hettich and Grass soft suction closure guide. 2700 K indoor LED lighting. New Kerry hanging bars.

EXTERIOR CARPENTER

- Aluminum exterior carpentry model CORTIZO COR-4700 RPT, special 3-layer lacquer, Ral: 7016 textured. Double glazed 4+4/12/4+4 planitherms.

BATH INSTALLATIONS

MAIN BASE

- Odorless cistern TECEprofil, 8 cm high, 112 cm, REF 9300500. Bright chrome pulsator 9240431 and odorless DREAM suspended toilet.
- 17 cm chrome mixer
- QUATTRO 3V QTV019 shower thermostat. Sprinkler 55x40 cm with water cascade SFO22A. Shower set ZDUP 094 TONDO CR.
- MOOD bathtub 170x90x47 cm. REF 7360520.

QUALITY IN REST OF BATHROOMS

- Odorless cistern: TECEprofil, 8 cm high, 112 cm, REF 9300500. Chrome Gloss push button 9240431 and odorless DREAM suspended toilet.
- QUATTRO QTV003 washbasin mixer, chrome, 17 and 24.5 cm. Chrome valves.
- QUATTRO 2V QTV018 shower thermostat. Round 30 cm spray head, JAMAICA CR.
- 12 cm ceiling shower arm. Shower set ZDUP 094 TONDO C.

KITCHEN

- Interior of MERIVOBX GRIS ANTRACITA kitchen furniture with a thickness of 19 mm. Model doors: CASTELLÓN with a thickness of 23 mm and an exclusive color of Roble. Roble Exclusive Flat Collar Strap. Zócalo Roble Exclusive.
- Top and sides made of Titanium Matrix granite (Dark Pearl). Matching model with the top (induction zone).
- GAGGENAU and MIELE household appliances.
- OGGI accessories.

LAUNDRY

- Laundry room furniture from the ADRIANA series, featuring 22mm FLOLIO 64 FINE ALPINO. ASA 855-S strap in matte black. White interiors with a depth of 18mm, extending to 80cm. HETTICH hinges with brakes. A 100cm matte black hanging bar is included.
- Countertop model ASCALE INFINITY in matte white porcelain. Features a 4cm English corner. The skirting is made of matte white aluminum, measuring 10cm in height. Low countertop sink.
- Household appliances include the MIELE WEI 865 WCS washing machine, with a capacity of 9KG and 1600 RPM. The machine is white in color.
- 9KG heat pump dryer in white
- MIELE WTV 501 washer union kit .
- ICOBEN ZEN 4040 stainless steel freezer, suitable for low countertop placement. ICOBEN ETNA SHOWER chrome faucet.
- ICOBEN DS ZEN chrome bottle dispenser .

ACS, HEATING AND VENTILATION

- Air-packaged fan coil with Altherma System for hot water (ACS) and air conditioning (A/A) production, manufactured by the TOSHIBA brand.
- Heating installation: water-based radiant heating (UPONOR NUBOS PLUS) on the main floor and electric radiant heating (MAGNUM) in all bathrooms.

ELECTRICITY, LIGHTING, SOUND AND DOMOTICS

- Electrical installations conducted by the company GOF, featuring an integrated home automation system for remote control via the app. Integrated sound system for both exterior and interior spaces.
- Interior lighting using focus OKNO. Outdoor lighting using C4 UP/DOWN LED wall lights.
- JUNG-LS 990 White mechanisms and fillers.
- Sound through AUTOAMP WIFI speakers.

SECURITY SYSTEM

- Alarm system the whole house by PROSEGUR.

EXTERIOR

- Garden designed by the interim landscaper WAVA HOMES, featuring an automatic water system.
- The pool was constructed with 2.5x2.5 LUNGOMARE mosaic tiles and pre-installation for a heat pump.



oslo79.es