

VILLA SERAPHINA

NUEVA ANDALUCÍA, MARBELLA



EXCEPTIONAL NEWLY-REFURBISHED VILLA IN LOS NARANJOS HILL CLUB

Villa Seraphina is an extraordinary newly-renovated villa boasting captivating architecture and interiors in an enviable location. Nestled within the prestigious gated community of Los Naranjos Hill Club in Nueva Andalucia, this residence offers panoramic views of La Concha mountain and the Mediterranean Sea.

Beds: 5 | **Baths:** 4+1 | **Plot:** 962m² | **Built:** 239m² | **Parking:** 2 | **Orientation:** S/E



Set upon an expansive plot, the property features exquisite landscaping, a garden and spacious terraces designed for alfresco dining and relaxed gatherings. The outdoor kitchenette, complete with a barbecue and bar, invites year-round entertainment, while a private pool awaits refreshing dips beneath the sun.





Step inside to discover a haven of elegance, where incredible furniture and fixtures adorn every corner, designed by the renowned interior design firm La Albaida. The seamless flow between living and dining areas is accentuated by ample windows that offer direct views and access to the terraces.





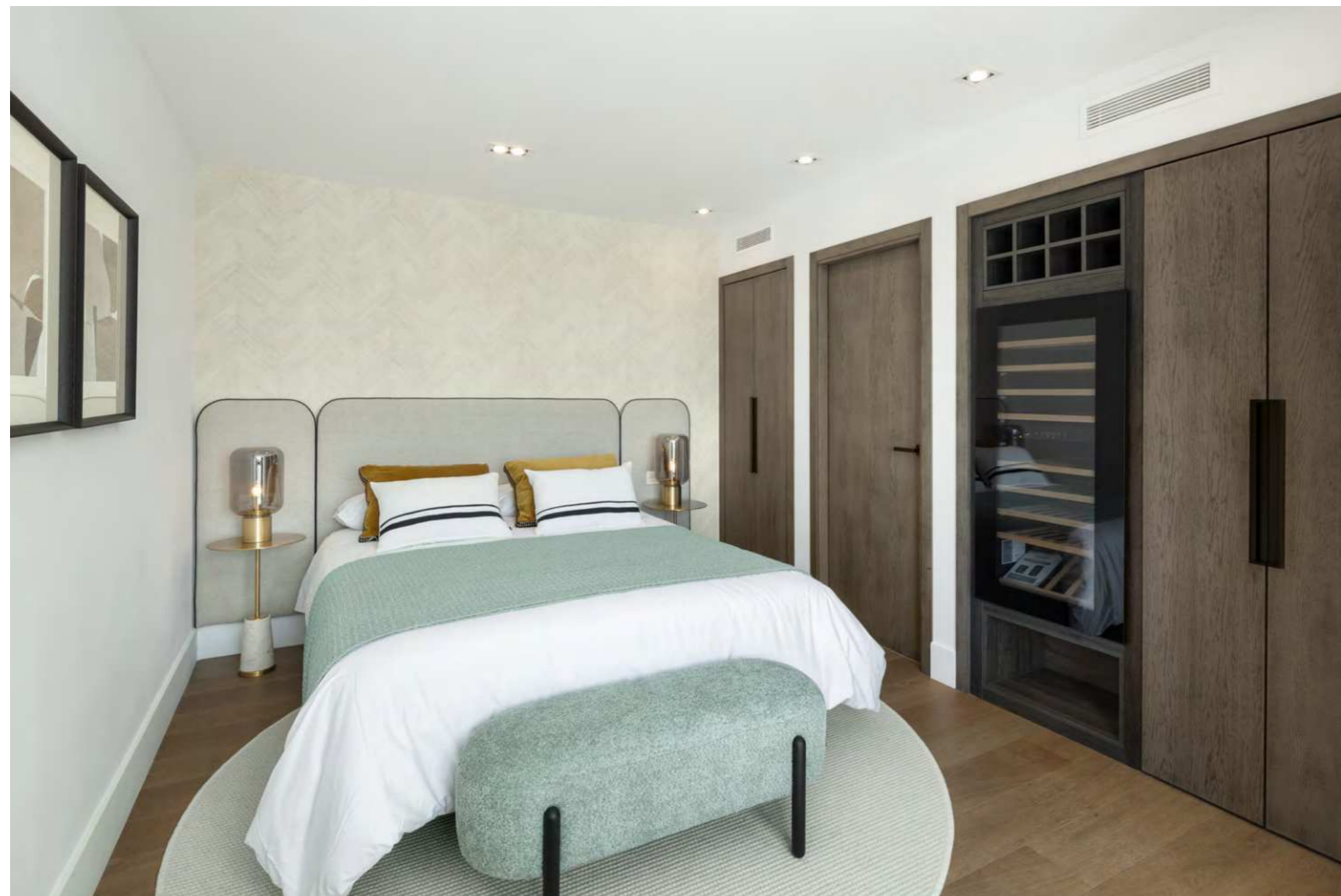


The modern kitchen, equipped with state-of-the-art appliances, combines functionality with aesthetic appeal, providing ample storage and counter space for added convenience.

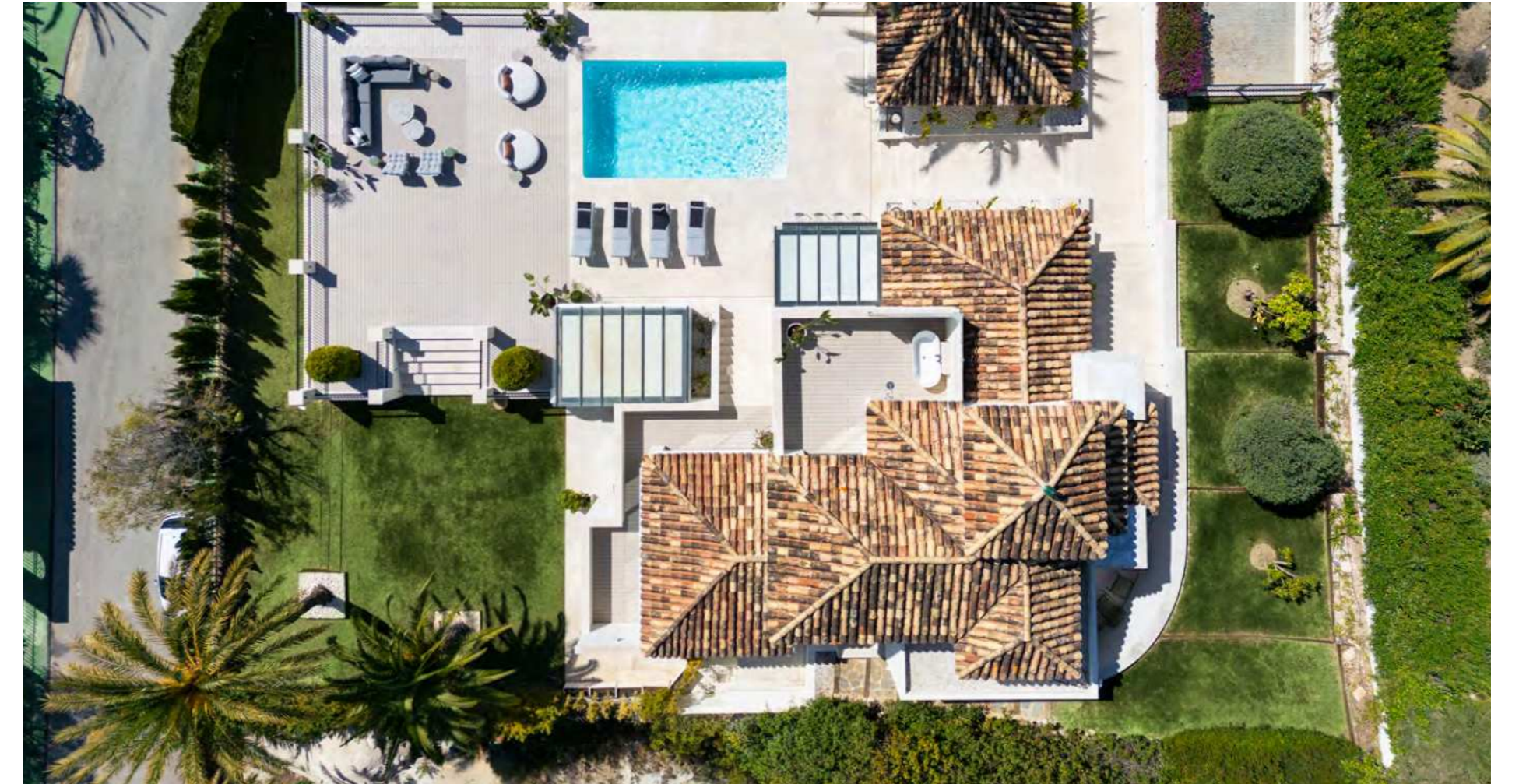
This villa offers five remarkable guest suites, but it's the master bedroom that steals the spotlight. Elegantly appointed, it boasts breathtaking views of La Concha mountain from both the room and private terrace.





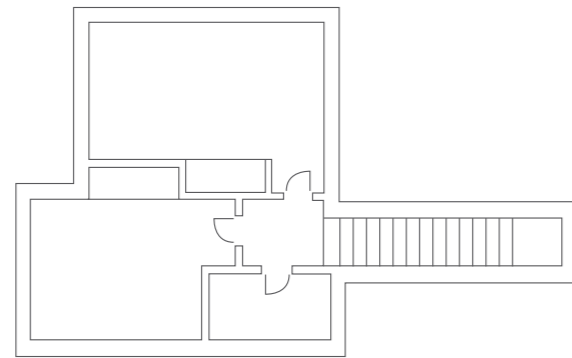




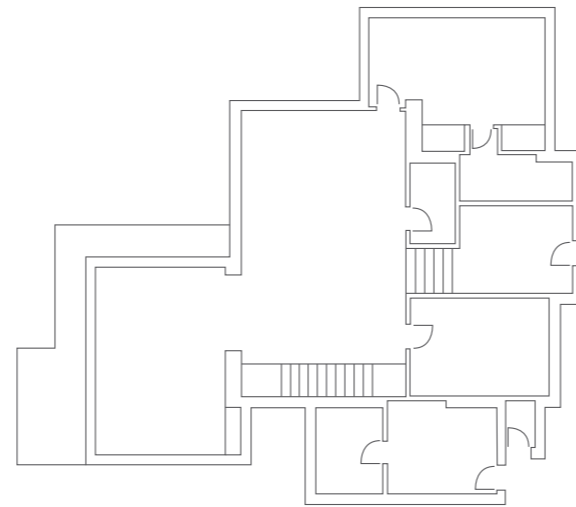


Villa Seraphina presents an unparalleled lifestyle in the heart of Nueva Andalucia, with easy access to world-renowned golf courses, international schools, and the iconic Puerto Banús. Experience the pinnacle of sophistication and convenience in this exceptional residence.

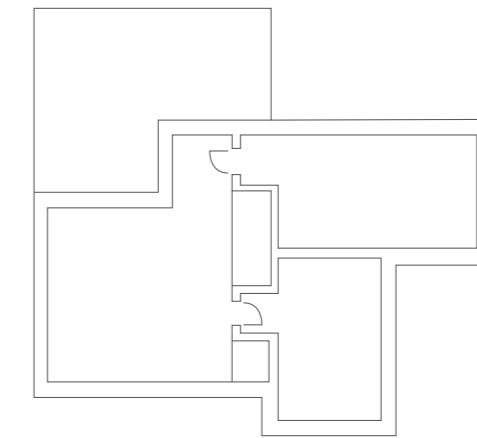
LOWER LEVEL



GROUND LEVEL



UPPER LEVEL



Beds: 5 | **Baths: 4+1** | **Plot: 962m²** | **Built: 239m²** | **Parking: 2** | **Orientation: S/E**

QUALITY SPECIFICATIONS

FLOORING

INTERNAL

- Oak floors

EXTERNAL

- Natural stone (limestone from Spain)
- Grey decking next to the pool is synthetic compound with "wooden" color effect, easy to maintain

CARPENTRY (WINDOWS & DOORS)

- Double glazed windows
- Custom made main entrance and master suite doors
- Custom made furniture: wardrobes, doors, kitchen units, bathroom furniture

BATHROOMS

- Porcelanosa tiles, sinks and toilets

AIR CONDITIONING & HEATING

- Daikin air-conditioning system with control in every room
- Electric underfloor heating in the bathrooms
- Pre-installation for pool heating

KITCHEN & LAUNDRY EQUIPMENT

- Custom made kitchen furniture
- Corian countertop
- Siemens appliances

INSTALLATIONS

- Alarm system with security cameras
- Integrated Sonos music system
- KNX smart home system with option to control sound, lights and air conditioning from an iPad

OTHER

- Gated community
- BBQ area with custom made units and black granite worktops



villaseraphina.es