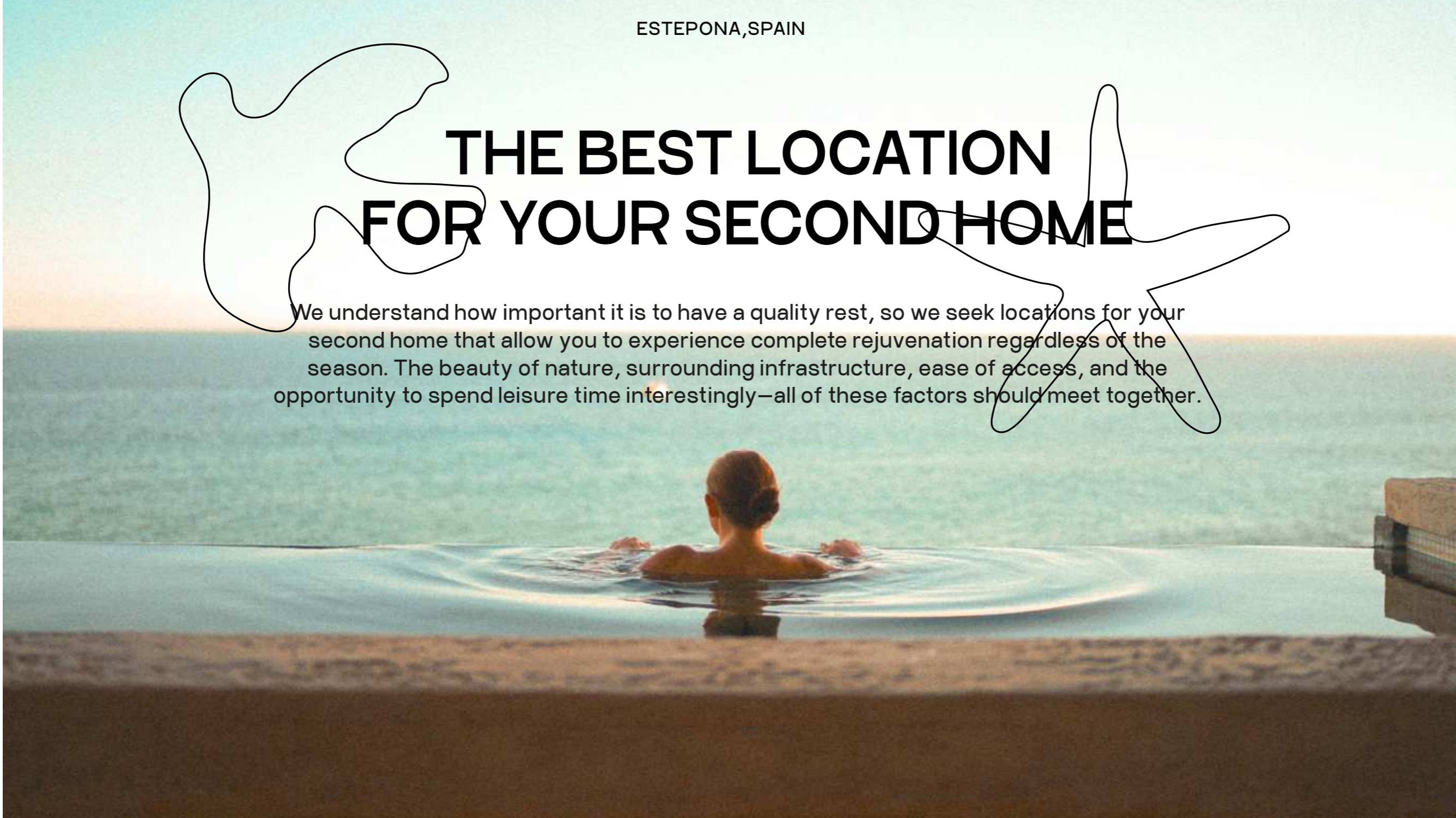


**EQUILIBRIO**  
Apartments

ESTEPONA, SPAIN

# THE BEST LOCATION FOR YOUR SECOND HOME

We understand how important it is to have a quality rest, so we seek locations for your second home that allow you to experience complete rejuvenation regardless of the season. The beauty of nature, surrounding infrastructure, ease of access, and the opportunity to spend leisure time interestingly—all of these factors should meet together.





ESTEPONA, SPAIN

**15 APARTMENTS  
PRIVATE COMPLEX  
FROM A LEGENDARY  
MARBELLA  
DEVELOPMENT  
COMPANY**

by



**GREENLIFE**

SINCE 1972





ESTEPONA, SPAIN



JUST 220M FROM  
THE BEACH



# LOCATION







ESTEPONA, SPAIN

# BREATHTAKING SEA VIEW





# MORE SPACE, FEWER WALLS

Our architects have carefully designed this project, sparing no details. You won't find small windows here, only large glass panels that flood the spaces with natural light and offer panoramic views from spacious terraces. Equilibrio is a brand-new development built to the highest standards of quality and comfort. We offer underground parking with an elevator, a communal pool, and exquisite landscaping.





ESTEPONA, SPAIN





ESTEPONA, SPAIN

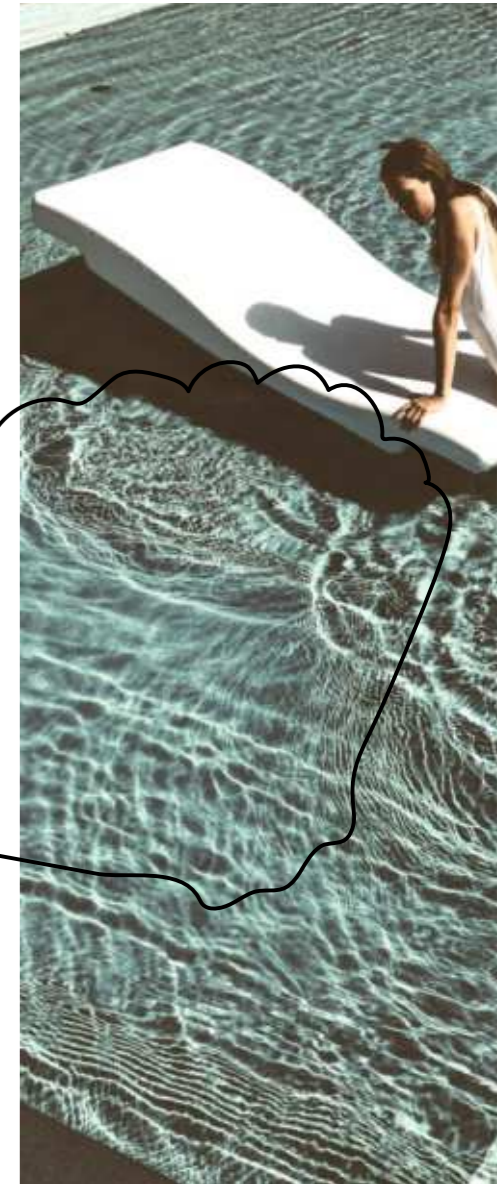
# ENDLESS STATE OF PLEASURE





ESTEPONA, SPAIN

# GUARANTEED PRIVACY





ESTEPONA, SPAIN

# CHOOSING THE BEST LOCATIONS

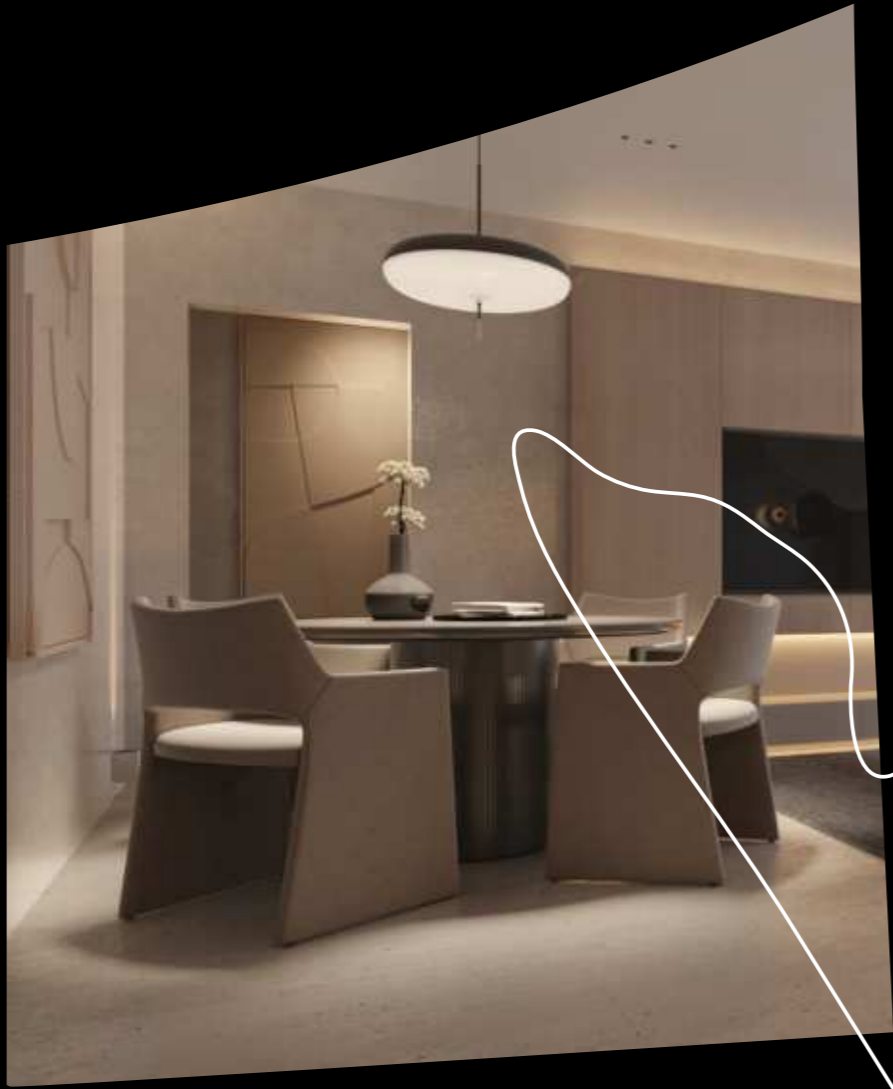




ESTEPONA, SPAIN



ESTEPONA, SPAIN





ESTEPONA, SPAIN



ESTEPONA, SPAIN





# OUR LEADING PARTNERS

WE REALIZE THAT YOUR SECOND HOME SHOULD HAVE GORGEOUS DESIGN, ARCHITECTURE, PLANNING, AND DILIGENT CONSTRUCTION SUPERVISION. THAT'S WHY WE PARTNER WITH COMPANIES THAT HAVE NOT ONLY DEMONSTRATED THEIR ABILITY TO DO ALL OF THIS AT A HIGH LEVEL, THEY ARE LEADERS IN THEIR FIELD. THE SCALE OF THEIR PROJECTS PROVE THIS.

 **uete** arquitectos

**21A**





HUETE ARQUITECTOS, THE MOST RENOWNED ARCHITECTURAL COMPANY IN THE SOUTH OF SPAIN, WITH OVER 25 DIFFERENT AWARDS AND 20 YEARS OF EXPERIENCE, IS THE ONE RESPONSIBLE FOR DESIGNING OUR PROJECTS.

MORE THAN  
**20** YEARS  
OF EXPERIENCE

**13** OFFICES  
IN DIFFERENT  
COUNTRIES

**25**  
INTERNATIONAL  
AWARDS








**2HA COMPANY OVERSEES  
THE CONSTRUCTION  
PROCESS, AS THEY ARE ONE  
OF THE MOST EXPERIENCED  
ON THE SPANISH COAST.  
THEIR IMPECCABLE  
REPUTATION AND DOZENS OF  
COMPLETED PROJECTS  
SPEAK FOR THEIR  
PROFESSIONALISM.**





ESTEPONA, SPAIN

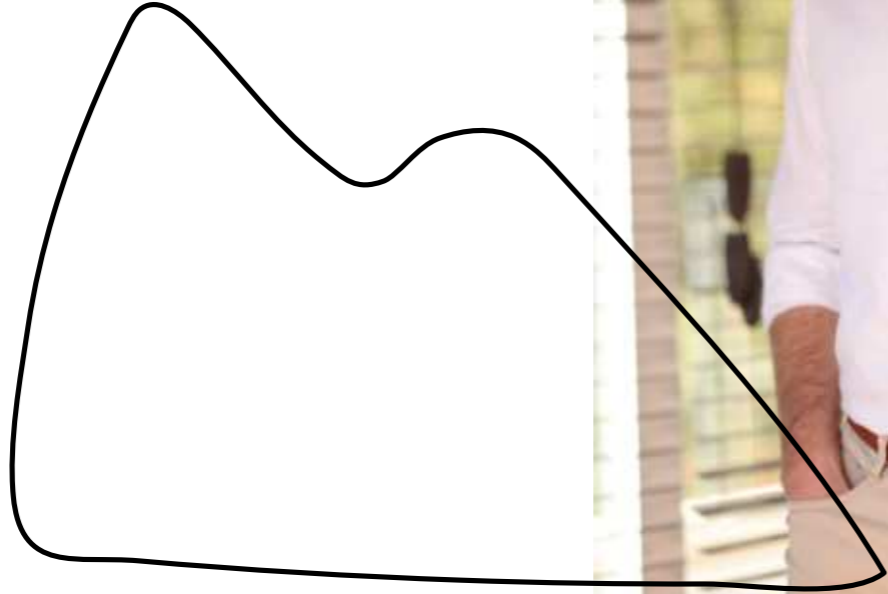


OUR TEAM CONSISTS OF PEOPLE WHO COMBINE  
EXPERTISE WITH IDEALISM BECAUSE CREATING A TRUE  
SECOND HOME IS ONLY POSSIBLE WHEN ALL OF US  
COME TO THE OPINION OF 'YES, I DREAM OF LIVING  
HERE TOO'



# ANDRES MONCADA

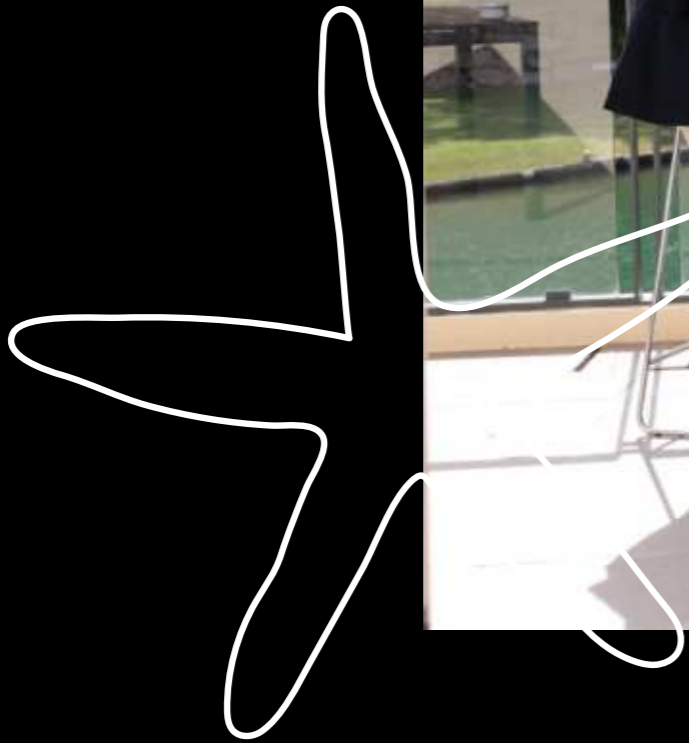
HEAD OF PROJECT



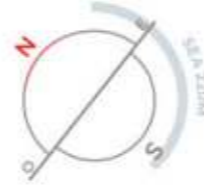
**22 YEARS OF EXPERIENCE  
IN CONSTRUCTION  
PROJECT MANAGEMENT IN 9  
COUNTRIES: SPAIN,  
GERMANY, ITALY, CZECH  
REPUBLIC, SRI LANKA,  
VIETNAM, URUGUAY,  
SLOVAKIA, BELARUS.  
IN 2013, INTERNATIONAL  
PROJECT MANAGEMENT  
CERTIFICATION WAS  
OBTAINED.  
MORE THAN 750 HOUSING  
UNITS OF VARIOUS TYPES  
WERE BUILT UNDER THE  
MANAGEMENT.**

ESTEPONA, SPAIN

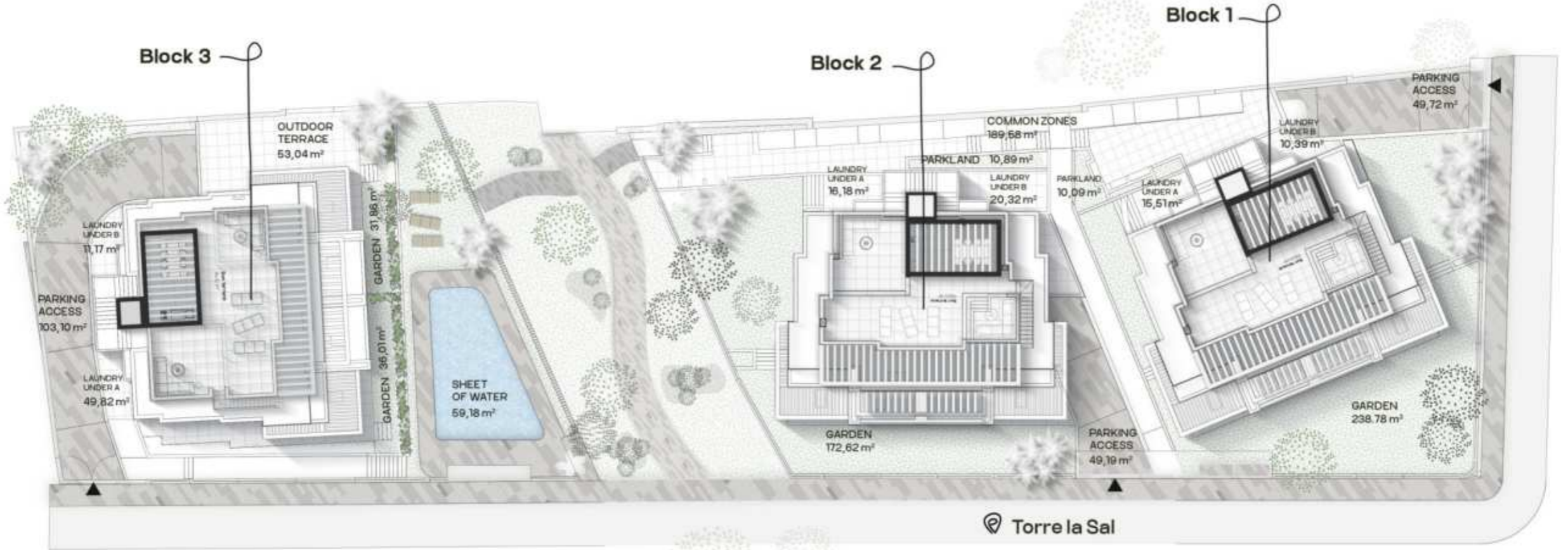
# OUR TEAM







# GENERAL PLAN



**O-B**



SEA 220M

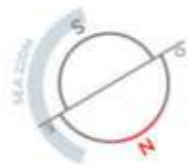


**O-A**

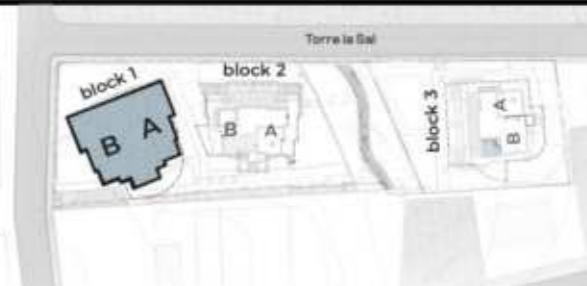


**BLOCK 1**  
GROUND FLOOR

APARTMENTS B	USEFUL AREA	BUILD AREA
APARTMENT	76,17 m <sup>2</sup>	91,50 m <sup>2</sup>
COVERED TERRACE	23,32 m <sup>2</sup>	24,88 m <sup>2</sup>
UNCOVERED TERRACE	17,62 m <sup>2</sup>	17,62 m <sup>2</sup>
<b>TOTAL AREA</b>	<b>117,11 m<sup>2</sup></b>	<b>134,00 m<sup>2</sup></b>



APARTMENTS A	USEFUL AREA	BUILD AREA
APARTMENT	76,17 m <sup>2</sup>	91,50 m <sup>2</sup>
COVERED TERRACE	23,19 m <sup>2</sup>	24,75 m <sup>2</sup>
UNCOVERED TERRACE	23,82 m <sup>2</sup>	23,82 m <sup>2</sup>
<b>TOTAL AREA</b>	<b>123,18 m<sup>2</sup></b>	<b>140,07 m<sup>2</sup></b>





1-B

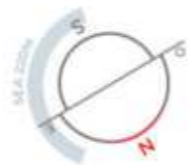
1-A

SEA 220M

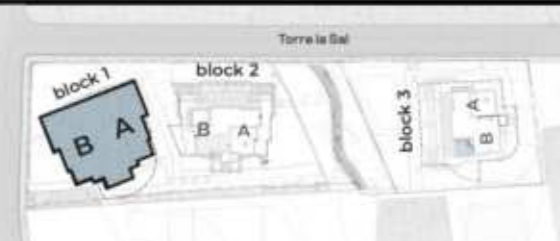


**BLOCK 1**  
1 FLOOR

APARTMENTS B	USEFUL AREA	BUILD AREA
APARTMENT	76,19 m <sup>2</sup>	91,50 m <sup>2</sup>
COVERED TERRACE	5,12 m <sup>2</sup>	6,34 m <sup>2</sup>
UNCOVERED TERRACE	12,84 m <sup>2</sup>	18,19 m <sup>2</sup>
<b>TOTAL AREA</b>	<b>94,15 m<sup>2</sup></b>	<b>116,03 m<sup>2</sup></b>



APARTMENTS A	USEFUL AREA	BUILD AREA
APARTMENT	76,19 m <sup>2</sup>	91,50 m <sup>2</sup>
COVERED TERRACE	5,12 m <sup>2</sup>	6,34 m <sup>2</sup>
UNCOVERED TERRACE	12,84 m <sup>2</sup>	18,19 m <sup>2</sup>
<b>TOTAL AREA</b>	<b>94,15 m<sup>2</sup></b>	<b>116,03 m<sup>2</sup></b>



ESTEPONA, SPAIN

# 2-A

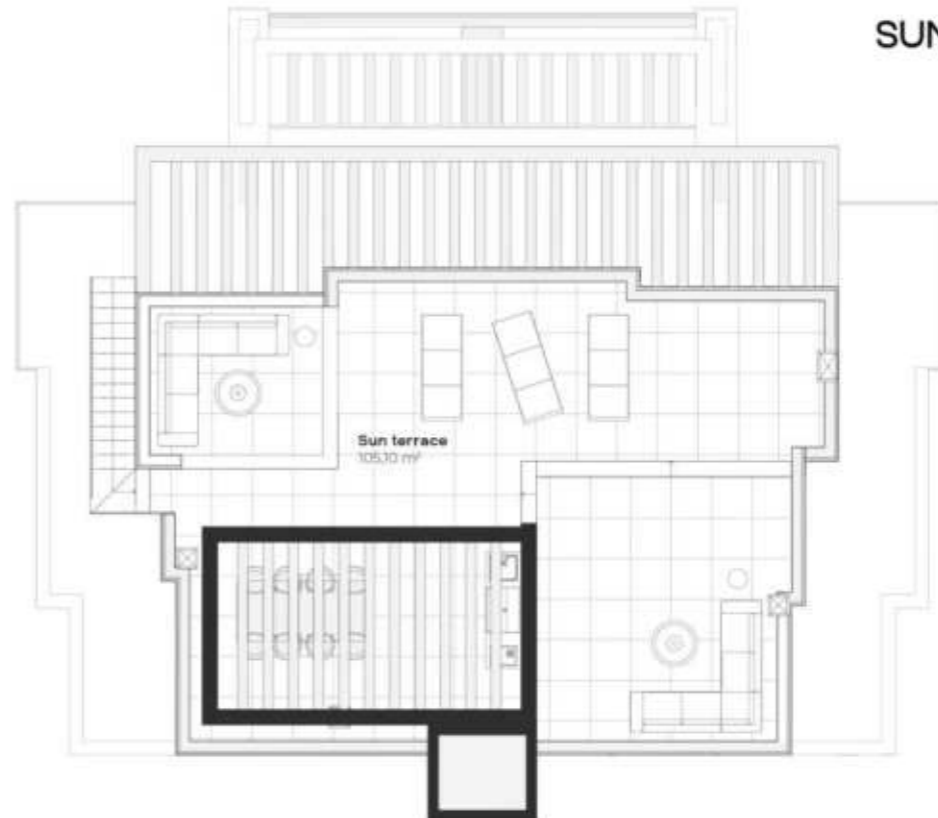
SECOND FLOOR

SEA 220M



# 2-A

SUN TERRACE

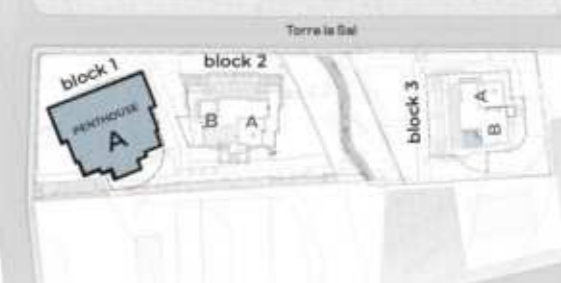


## BLOCK 1 PENTHOUSE

APARTMENT 2-A	USEFUL AREA	BUILD AREA
APARTMENT	87,27 m <sup>2</sup>	109,48 m <sup>2</sup>
UNCOVERED TERRACE	78,62 m <sup>2</sup>	87,19 m <sup>2</sup>
<b>TOTAL AREA</b>	<b>165,85 m<sup>2</sup></b>	<b>196,65 m<sup>2</sup></b>



SUN TERRACE 2-A	USEFUL AREA	BUILD AREA
UNCOVERED TERRACE	105,10 m <sup>2</sup>	121,03 m <sup>2</sup>
<b>TOTAL AREA</b>	<b>105,10 m<sup>2</sup></b>	<b>121,03 m<sup>2</sup></b>





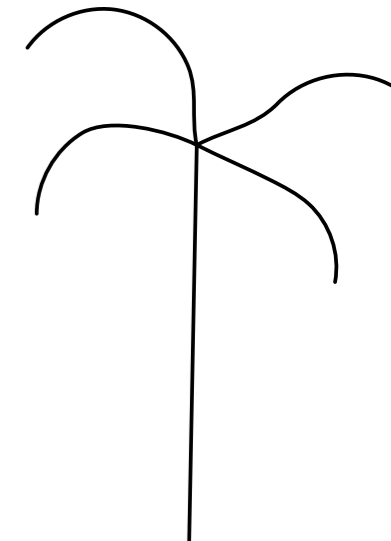
O-B



SEA 220M



O-A

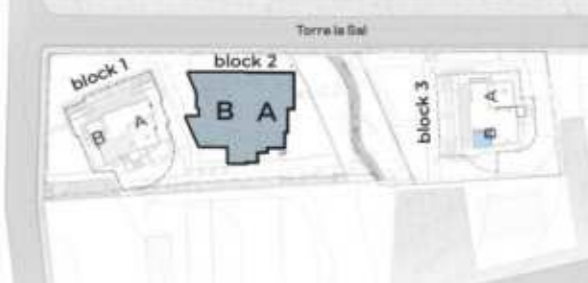


BLOCK 2  
GROUND FLOOR

APARTMENTS B	USEFUL AREA	BUILD AREA
APARTMENT	76,17 m <sup>2</sup>	91,50 m <sup>2</sup>
COVERED TERRACE	23,22 m <sup>2</sup>	23,69 m <sup>2</sup>
UNCOVERED TERRACE	37,19 m <sup>2</sup>	40,42 m <sup>2</sup>
<b>TOTAL AREA</b>	<b>136,58 m<sup>2</sup></b>	<b>155,61 m<sup>2</sup></b>



APARTMENTS A	USEFUL AREA	BUILD AREA
APARTMENT	76,17 m <sup>2</sup>	91,50 m <sup>2</sup>
COVERED TERRACE	23,19 m <sup>2</sup>	24,75 m <sup>2</sup>
UNCOVERED TERRACE	22,73 m <sup>2</sup>	22,73 m <sup>2</sup>
<b>TOTAL AREA</b>	<b>122,09 m<sup>2</sup></b>	<b>138,98 m<sup>2</sup></b>



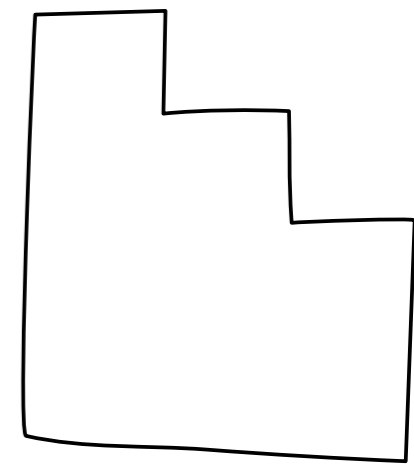
1-B



SEA 220M



1-A

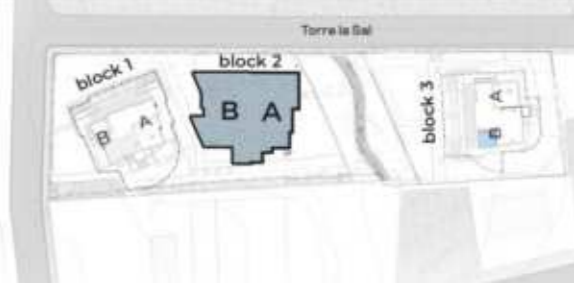


**BLOCK 2**  
1 FLOOR

APARTMENTS B		USEFUL AREA	BUILD AREA
APARTMENT		76,19 m <sup>2</sup>	91,50 m <sup>2</sup>
COVERED TERRACE		5,12 m <sup>2</sup>	6,34 m <sup>2</sup>
UNCOVERED TERRACE		12,84 m <sup>2</sup>	18,19 m <sup>2</sup>
<b>TOTAL AREA</b>		<b>94,15 m<sup>2</sup></b>	<b>116,03 m<sup>2</sup></b>



APARTMENTS A		USEFUL AREA	BUILD AREA
APARTMENT		76,19 m <sup>2</sup>	91,50 m <sup>2</sup>
COVERED TERRACE		5,12 m <sup>2</sup>	6,34 m <sup>2</sup>
UNCOVERED TERRACE		12,84 m <sup>2</sup>	18,19 m <sup>2</sup>
<b>TOTAL AREA</b>		<b>94,15 m<sup>2</sup></b>	<b>116,03 m<sup>2</sup></b>





# 2-A

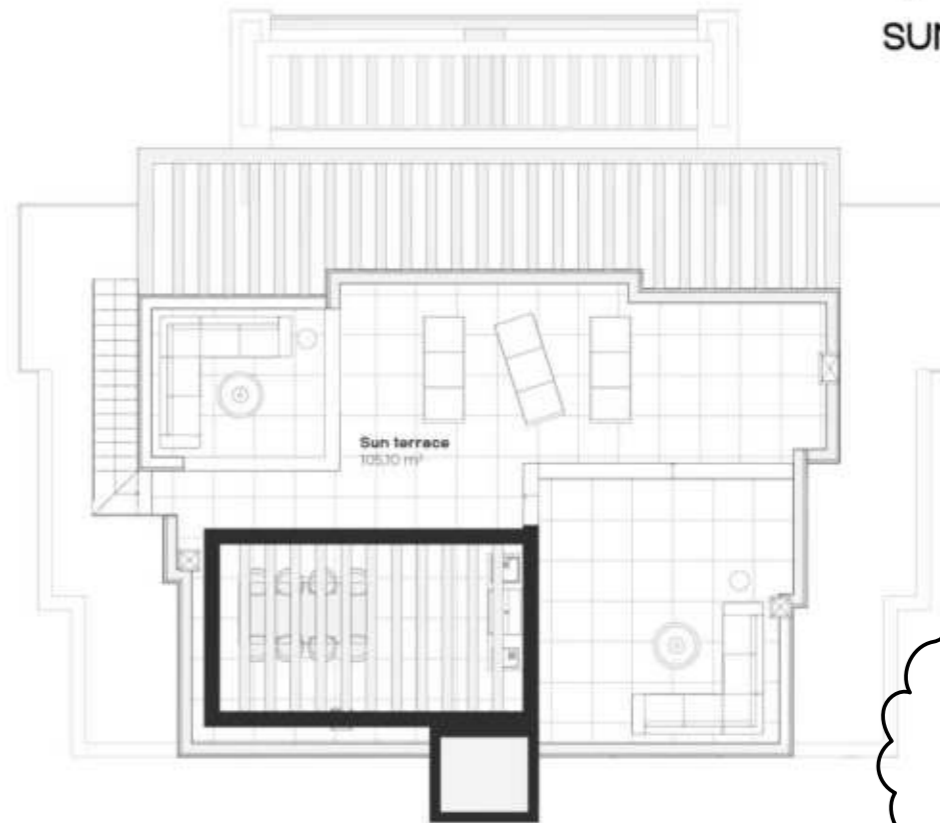
SECOND FLOOR

SEA 220M



# 2-A

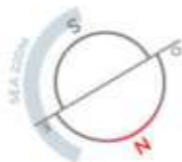
SUN TERRACE



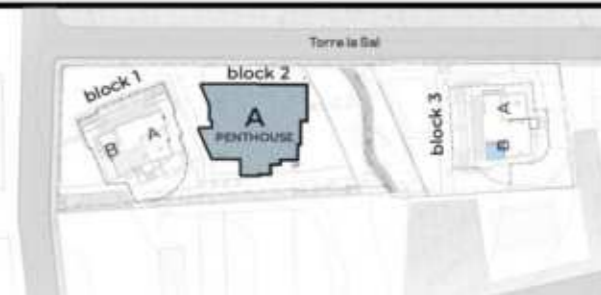
## BLOCK 2

PENTHOUSE

PENTHOUSE A	USEFUL AREA	BUILD AREA
APARTMENT	87,27 m <sup>2</sup>	109,48 m <sup>2</sup>
UNCOVERED TERRACE	78,62 m <sup>2</sup>	87,19 m <sup>2</sup>
TOTAL AREA	165,85 m <sup>2</sup>	196,65 m <sup>2</sup>



PENTHOUSE A	USEFUL AREA	BUILD AREA
UNCOVERED TERRACE	105,10 m <sup>2</sup>	121,03 m <sup>2</sup>
TOTAL AREA	105,10 m <sup>2</sup>	121,03 m <sup>2</sup>



O-B



O-A

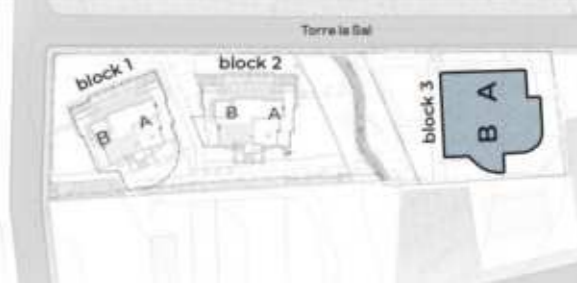


**BLOCK 3**  
GROUND FLOOR

APARTMENTS B	USEFUL AREA	BUILD AREA
APARTMENT	75,55 m <sup>2</sup>	91,50 m <sup>2</sup>
COVERED TERRACE	23,65 m <sup>2</sup>	25,54 m <sup>2</sup>
UNCOVERED TERRACE	59,53 m <sup>2</sup>	71,73 m <sup>2</sup>
<b>TOTAL AREA</b>	<b>158,73 m<sup>2</sup></b>	<b>188,77 m<sup>2</sup></b>



APARTMENTS A	USEFUL AREA	BUILD AREA
APARTMENT	75,55 m <sup>2</sup>	91,50 m <sup>2</sup>
COVERED TERRACE	22,24 m <sup>2</sup>	24,56 m <sup>2</sup>
UNCOVERED TERRACE	34,46 m <sup>2</sup>	34,46 m <sup>2</sup>
<b>TOTAL AREA</b>	<b>132,23 m<sup>2</sup></b>	<b>150,52 m<sup>2</sup></b>





1-B

1-A

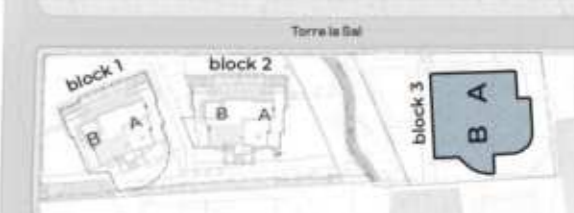


**BLOCK 3**  
1 FLOOR

APARTMENTS B	USEFUL AREA	BUILD AREA
APARTMENT	75,54 m <sup>2</sup>	91,50 m <sup>2</sup>
COVERED TERRACE	1,96 m <sup>2</sup>	1,96 m <sup>2</sup>
UNCOVERED TERRACE	16,99 m <sup>2</sup>	23,51 m <sup>2</sup>
<b>TOTAL AREA</b>	<b>94,49 m<sup>2</sup></b>	<b>116,97 m<sup>2</sup></b>



APARTMENTS A	USEFUL AREA	BUILD AREA
APARTMENT	75,54 m <sup>2</sup>	91,50 m <sup>2</sup>
COVERED TERRACE	1,96 m <sup>2</sup>	1,96 m <sup>2</sup>
UNCOVERED TERRACE	16,99 m <sup>2</sup>	23,51 m <sup>2</sup>
<b>TOTAL AREA</b>	<b>94,49 m<sup>2</sup></b>	<b>116,97 m<sup>2</sup></b>



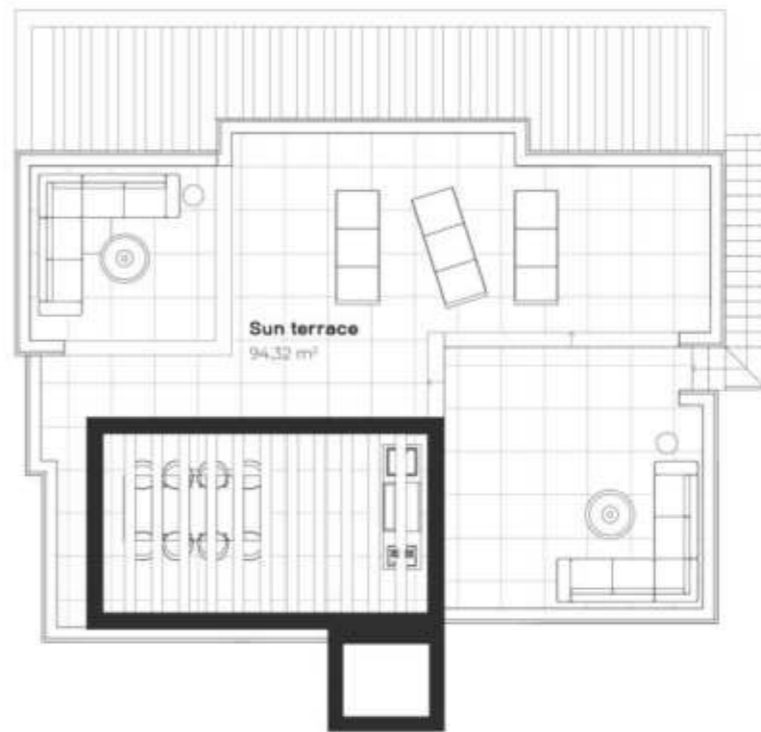
# 2-A

SECOND FLOOR



# 2-A

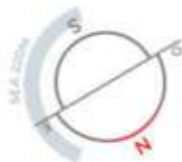
SUN TERRACE



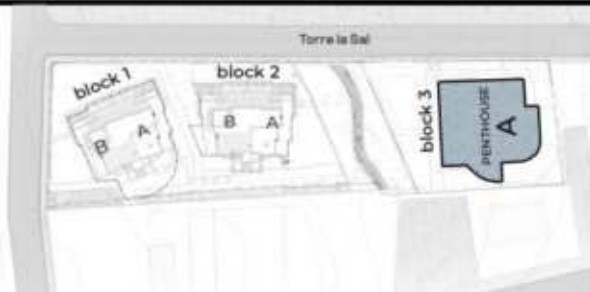
## BLOCK 3

PENTHOUSE

APARTMENTS B	USEFUL AREA	BUILD AREA
APARTMENT	87,15 m <sup>2</sup>	108,75 m <sup>2</sup>
UNCOVERED TERRACE	74,49 m <sup>2</sup>	84,51 m <sup>2</sup>
<b>TOTAL AREA</b>	<b>161,64 m<sup>2</sup></b>	<b>193,26 m<sup>2</sup></b>



APARTMENTS A	USEFUL AREA	BUILD AREA
UNCOVERED TERRACE	102,63 m <sup>2</sup>	116,93 m <sup>2</sup>
<b>TOTAL AREA</b>	<b>102,63 m<sup>2</sup></b>	<b>116,93 m<sup>2</sup></b>





ESTEPONA, SPAIN

A photograph of a beach at sunset. The sky is a warm, golden-orange color. In the foreground, the ocean is dark blue with white-capped waves. Several surfers are visible in the water. In the background, a dark silhouette of a coastline or hills is visible against the sunset sky. Overlaid on the image is a white line-art graphic consisting of several overlapping, organic shapes that resemble a stylized face or a series of waves. The text "FULL RELAXING MODE" is centered over the image in a white, bold, sans-serif font.

**FULL RELAXING  
MODE**



# EQUILIBRIO

Apartments

